

AUDIBAX

LIGHTING CATALOG 2024



DESIGNED IN SPAIN

ILUMINATING THE SOUND

Audibax, narrows the distance between high-quality sound and lighting products and consumers, ensuring both quality and proximity. As a one stop supplier, our mission is to connect you with the very best products out there and bring them right to your fingertips. With Audibax, get ready to take your entertainment to the next level with the finest products.

Our extensive product range spans across various categories, encompassing audio systems, lighting equipment, and a wide array of accessories. At Audibax, we take pride in our dedication to providing our partners with a diverse selection of solutions tailored to meet their specific needs. Driven by our commitment to innovation and technology, we are dedicated to elevating and enriching our customers' experiences.

AUDIBAX IS A REGISTERED
BRAND OF THE MH GROUP

MHGROUP

AUDIBAX 

**ILLUMINATING
THE
SOUND**





TABLE OF CONTENTS

MOVING HEADS	5	LED BARS	32	EFFECTS MACHINES	50
SPOT MOVING HEADS	6	STROBES	38	SPARK	52
WASH MOVING HEADS	12	OUTDOOR	44	HAZER & FOG	54
BATTERY POWERED LIGHTS	24			DMX Controllers	64
				ACCESSORIES	68
				ACP SERIES	70

MOVING HEADS

Illuminate the Extraordinary: Elevate Your Event with Our Moving Heads. Dynamic, precise, and awe-inspiring, our lighting solutions redefine the way you experience illumination. Transform any space into a mesmerizing spectacle of color and movement. Unleash the power of creativity with our cutting-edge moving heads – where lighting becomes an art, and every moment, a masterpiece.



MONSTER SERIES

SPOT MOVING HEADS

LIGHTING
MOVING HEADS

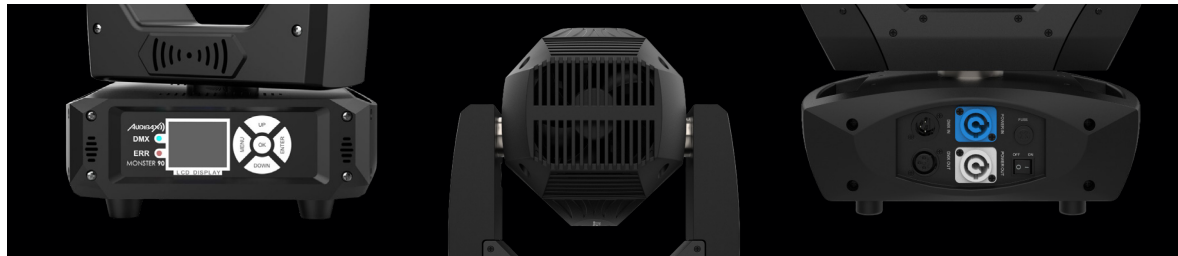
ILLUMINATES YOUR LIFE

Introducing the Audibax Monster Series – redefining mobile lighting. The Monster 200 Hybrid, a potent hybrid design, seamlessly blends a 200W LED's brilliance with versatile moving head capabilities, catering to lighting designers, DJs, and event planners. Meanwhile, the Monster 90, a compact powerhouse with an 80W LED, dual gobo wheels, and advanced optics, delivers intense projections. Ideal for events, weddings, pubs, or mobile discos. Both promise unprecedented visual spectacles, setting new standards in the industry.

MONSTER SERIES

SPOT MOVING HEADS

LIGHTING
MOVING HEADS



MONSTER SERIES

SPOT MOVING HEADS

LIGHTING
MOVING HEADS



Monster 200 Hybrid

HYBRID MOVING HEAD



Monster 90

SPOT MOVING HEAD

MONSTER SERIES

SPECIFICATIONS

LIGHTING

MOVING HEADS

MODEL	MONSTER 90	MONSTER 200 HYBRID
Type	Spot Moving Head	Hybrid Moving Head
DMX Control	DMX 512	DMX 512
Manual Control	Front Pannel	Front Pannel
Light Source	80W White LED	200W White LED
Channel DMX	14CH	18CH
Pan/Tilt Movement	P540° T270°	P540° T270°
Movement Resolution	8/16 Bit	8/16 Bit
Zoom Angle Motorized	20° to 25°	7° to 21°
Temperature	6500K	7500K
Palet Color Mix	8 Colors + White (CW)	9 colors + open
Strobe Type	1-25 Fps	1-25 Fps
Dimmer Ajustement	0-100%	0-100%
Effects	Motorized Zoom	Frost
Prisma	3 Facet Prism	4 Face Prism Rotating
Wheels Gobos	Static 7 / Rotate 6	Static 10/ Rotate 7
AC Connector Type	PowerCon -Schuko	PowerCon -Schuko
DMX Conector	DMX 3 Pin	DMX 3 Pin
Power Supply	AC90-240V, 50/60Hz	AC100-240V 50/60Hz
Weight	5.80 Kg	14.5 kg
Dimensions	350 x 240 x 200 mm	343 x 239 x 537 mm
Enclosure Finish	ABS + Metal	ABS + Metal
Solutions	Rental Hospitality Leisure Sport & Wellness	Rental Hospitality Leisure Sport & Wellness

BOSTON 60

SPOT MOVING HEAD

LIGHTING
MOVING HEADS



LIGHTING THE WAY

Audibax Boston 60 is a compact spot moving head with a brilliant 60W LED. Medium-sized yet powerful, it stands out for its lightness and versatility, delivering high-performance lighting with customizable colors and gobos. Offering rapid movements and color changes, the Boston 60 ensures an exhilarating lighting experience. Its simple and elegant design makes it perfect for space-limited venues like pubs, nightclubs, mobile DJs, or any setting requiring effective lighting solutions.

BOSTON 60

SPOT MOVING HEAD

LIGHTING
MOVING HEADS

SPECIFICATIONS

MODEL	BOSTON 60
Type	Spot Moving Head
DMX Control	DMX 512
Manual Control	Front Pannel
Light Source	60W White LED
Channel DMX	9/11CH
Pan/Tilt Movement	P540° T270°
Movement Resolution	8 Bit
Temperature	6500K
Palet Color Mix	7 Colors + White
Strobe Type	1-30Fps
Dimmer Ajustement	0-100%
Wheels Gobos	Static 7
AC Connector Type	IEC -Schuko
DMX Conector	DMX 3 Pin
Power Supply	AC110-220V, 50-60HZ
Weight	3,2Kg
Dimensions	155 x 235 x 145 mm
Construction	ABS + Metal
Solutions	Rental Hospitality Leisure Sport & Wellness



IOWA SERIES

WASH MOVING HEADS

LIGHTING
MOVING HEADS

LET THE LIGHT SHINE ON

Introducing the IOWA Series, cutting-edge wash moving heads that operate seamlessly in DMX512 mode. Emitting vibrant and brilliant colors, these fixtures create an unparalleled lighting experience, setting the stage for captivating visual spectacles.



IOWA SERIES

WASH MOVING HEADS

LIGHTING
MOVING HEADS



IOWA SERIES

WASH MOVING HEADS

LIGHTING
MOVING HEADS



Iowa Pix 300

WASH
MOVING
HEAD



Iowa 360 Zoom

WASH
MOVING
HEAD



Iowa 90 Laser

WASH
MOVING HEAD
KALEIDOSCOPE
EFFECT



Iowa 70

WASH
MOVING
HEAD

IOWA SERIES

SPECIFICATIONS

LIGHTING

MOVING HEADS

MODEL	IOWA PIX 300	IOWA 360 ZOOM	IOWA 90 LASER	IOWA 70
Type	Wash Moving Head	Wash Moving Head	Wash Moving Head	Wash Moving Head
DMX Control	DMX 512	DMX 512	DMX 512	DMX 512
Manual Control	Front Pannel	Front Pannel	Front Pannel	Front Pannel
Light Source	19*15W RGBW 4-in-1 Osram LED	36 x 10W RGBW 4-in-1 LED	6x15W RGBW 4-In-1 LED	7*8W RGBW 4-in-1 LED
Channel DMX	15/23CH	15/23CH	16CH	14CH
Pan/Tilt Movement	P540° T280°	P540° T270°	P540° T180°	P540° T180°
Movement Resolution	8/16 Bit	8/16 Bit	8 Bit	8 Bit
Zoom Angle Motorized	7° to 55°	7° to 55°	Fixed 1.5 Degrees	N/A
Palet Color Mix	RGBW 16.7 million	RGBW 16.7 million	RGBW 16.7 million	RGBW
Strobe Type	1-25 Fps	1-25 Fps	1-30Fps	1-20Fps
Dimmer Ajustement	0-100%	0-100%	0-100%	0-100%
Prisma	N/A	3 Face Prism Rotating	Kaleidoscope 6 to 51 Degrees	N/A
Wheels Gobos	N/A	Static 10/ Rotate 6	N/A	N/A
Added FX	N/A	N/A	Laser Green 500mW	N/A
AC Connector Type	PowerCon -Shucko	PowerCon -Shucko	IEC -Schuko	IEC -Schuko
DMX Conector	DMX 3 Pin	DMX 3 Pin	DMX 3 Pin	DMX 3 Pin
Power Supply	AC110-260V 50/60Hz	AC100-240V 50/60Hz	AC100-240V 50&60HZ	AC100-240V, 50-60HZ
Weight	8Kg	11 kg	3.6KG	3Kg
Dimensions	250mm x 380 x 165	325mm x 400 x 210	200 x 150 x 260 mm	245 x 180 x 176 mm
Enclosure Finish	ABS	ABS + Metallic	ABS + Metallic	ABS
Solutions	Rental Hospitality Leisure Sport & Wellness	Rental Hospitality Leisure Sport & Wellness	Rental Hospitality Leisure Sport & Wellness	Rental Hospitality Leisure Sport & Wellness

CHICAGO 475 ZOOM

WASH MOVING HEADS

LIGHTING
MOVING HEADS

LIGHTING THE WAY

Meet the Audibax Chicago 475 Zoom, an ultra-high-power LED wash moving head. Its sleek design houses a smooth, fast, and quiet motorized zoom (10°-60°). With 19*25W 4-in-1 RGBW LEDs and high-efficiency optic lenses, it delivers a limitless spectrum of colors. Featuring 3 concentric rings, it offers unique possibilities for stunning color patterns, audience-blinding effects, and comprehensive, even wash coverage. Elevate your lighting with Chicago 475 Zoom.



CHICAGO 475 ZOOM

WASH MOVING HEADS

LIGHTING
MOVING HEADS

SPECIFICATIONS

MODEL	CHICAGO 475 ZOOM
Type	Wash Moving Head
DMX Control	DMX 512
Manual Control	Front Pannel
Light Source	19x 25w LED RGBW
Channel DMX	10/15/21/39/37CH
Pan/Tilt Movement	P540° T280°
Movement Resolution	8/16 Bit
Temperature	CTC 2700K to 8000K
Palet Color Mix	RGBW
Strobe Type	1-30Fps
Dimmer Ajustement	0-100%
Effects	Motorized Zoom
Wheels Gobos	N/A
Added FX	Beam Angle 10 to 60 Grades
AC Connector Type	PowerCon -Schuko
DMX Conector	DMX 3 or 5 Pin
Power Supply	AC100-240V 50/60HZ
Weight	19,5Kg
Dimensions	430 x 246 x 512 mm
Construction	Aluminum/Iron/Plastic
Solutions	Rental Hospitality Leisure Sport & Wellness



ALASKA SERIES

WASH MOVING HEADS

LIGHTING
MOVING HEADS

LIGHTS IN MOTION, DREAMS IN ACTION

Introducing the Alaska Series, featuring both zoom wash and beam moving heads. Compact yet high-performing, ideal for retail, commercial, and leisure settings. Unleash dynamic lighting experiences with the versatility of Alaska.



ALASKA SERIES

WASH MOVING HEADS

LIGHTING
MOVING HEADS



ALASKA SERIES

WASH MOVING HEADS

LIGHTING
MOVING HEADS



Alaska 100

BEAM MOVING HEAD



Alaska 160 Zoom

WASH MOVING HEAD

ALASKA SERIES

SPECIFICATIONS

LIGHTING

MOVING HEADS

MODEL	ALASKA 100	ALASKA 160 ZOOM
Type	Beam Moving Head	Wash Moving Head
DMX Control	DMX 512	DMX 512
Manual Control	Front Pannel	Front Pannel
Light Source	100w led + 24 RGB 3in1 Leds ring	4x40W RGBW Super Brightness Led
Channel DMX	16/24CH	16CH
Pan/Tilt Movement	P540° T270°	P540° T270°
Movement Resolution	8/16 Bit	8/16 Bit
Temperature	9000K	9000K
Palet Color Mix	12 Color & White	RGBW
Strobe Type	1-30Fps	1-30Fps
Dimmer Ajustement	0-100%	0-100%
Effects	Motorized Focus	Motorized Zoom
Wheels Gobos	Rotate 13	N/A
Prism	8 Face Prism Rotating	N/A
Added FX	Ring Led RGB	Beam Angle 4 to 50 Degrees
AC Connector Type	PowerCon -Schuko	PowerCon -Shucko
DMX Conector	DMX 3 Pin	DMX 3 Pin
Power Supply	AC100-240V 50/60HZ	AC100-240V 50/60HZ
Weight	6,3Kg	6Kg
Dimensions	225 x 210 x 360 mm	225 x 210 x 360 mm
Construction	Aluminum/Iron/Plastic	Aluminum/Iron/Plastic
Solutions	Rental Hospitality Leisure Sport & Wellness	Rental Hospitality Leisure Sport & Wellness

OREGON 120

WASH MOVING HEADS

LIGHTING
MOVING HEADS

BE BOLD. BE BRIGHT

Meet the Audibax Oregon 120, a powerful and compact RGBw 4-in-1 Beam + Wash moving head. Delivering a mesmerizing light show with independent control of two distinct effects on each face, it creates stunning visual experiences. With ultra-fast, precise horizontal and vertical movements, it features a potent motor for sharp, focused light beams. Exceptionally bright and durable, the Oregon 120 ensures a captivating and enduring lighting spectacle.



OREGON 120

WASH MOVING HEADS

LIGHTING

MOVING HEADS

SPECIFICATIONS

MODEL	OREGON 120
Type	Beam Moving Head + Wash
DMX Control	DMX 512
Manual Control	Front Pannel
Light Source	Beam 60W led + Wash 6x10W RGBW 4in1
Channel DMX	17CH
Pan/Tilt Movement	P540° T360°
Movement Resolution	8 Bit
Temperature	6500K
Palet Color Mix	RGBW
Strobe Type	1-25 Fps
Dimmer Adjustment	0-100%
Added FX	Ring Led RGB
AC Connector Type	IEC -Schuko
DMX Conector	DMX 3 Pin
Power Supply	AC90-240V, 50/60Hz
Weight	4.7 kg
Dimensions	155 x 275 x 145 mm
Construction	ABS + Metal
Solutions	Rental Hospitality Leisure Sport & Wellness



BATTERY POWERED LIGHTS





EVENT SERIES

BATTERY POWERED LIGHTS

LIGHTING

MORE LIGHT FOR LESS

Introducing the Event Series: battery-powered spotlights with wireless control. Certain models designed for outdoor use, featuring water resistance. Enjoy vivid, bright colors for impactful lighting solutions.

Elevate your events with the versatility of the Event Series.

EVENT SERIES

BATTERY POWERED LIGHTS

LIGHTING



EVENT SERIES

BATTERY POWERED LIGHTS

LIGHTING



Event 18

LED Spotlight
with Battery



Event 78

LED PAR WITH
BATTERY



Event 90

LED Spotlight
with Battery



Event Water 144

LED PAR WITH BATTERY



Pro Event Water 216

LED PAR WITH BATTERY

EVENT SERIES

SPECIFICATIONS

LIGHTING

MODEL	EVENT 18	EVENT 78	EVENT 90	EVENT WATER 144	PRO EVENT WATER 216
Type	Spotlight Led	Led Par	Spotlight Led	Led Par	Led Par
DMX Control	DMX 512	DMX 512	DMX 512	DMX 512	DMX 512
Manual Control	Front Pannel	Rear Pannel	Rear Pannel	Rear Pannel	Rear Pannel
Light Source	3x6W RGBWAUV LED Beam 40°	6x15W RGBWAUV LED Beam 40°	6x15W RGBWAUV LED Beam 40°	12x12W RGBWAUV LED Beam 40°	12x18W RGBWAUV LED Beam 12/25/40°
Channel DMX	10CH	6/10CH	6/10CH	6/10CH	6/10CH
Strobe Type	1-20 Fps	1-20 Fps	1-20 Fps	1-20 Fps	-25 Fps
Dimming	0-100%	0-100%	0-100%	0-100%	0-100%
Palet Color Mix	RGBWA+UV	RGBWA+UV	RGBWA+UV	RGBWA+UV	RGBWA+UV
Battery Supply	4 Hours	4 Hours	One Color 10 Hours	4 Hours	N/A
IP Protection	IP 20	IP 20	IP 20	IP 65	IP 65
Wireless Control	Wireless & remote control	Wireless & remote control	Wireless & Rc control & APP	Wireless & remote control	Wireless & Rc control & APP
AC Connector Type	PowerCon -Schuko	PowerCon -Schuko	PowerCon - Schuko	Terminal Schuko	PowerCon - Schuko
DMX Connector	DMX 3 Pin	DMX 3 Pin	DMX 3 Pin	DMX 3 Pin	DMX 3 Pin
Power Supply	90 V-240 V, CA, 50/60 Hz	90 V-240 V, CA, 50/60 Hz	110 V-250 V, CA, 50/60 Hz	90 V-240 V, CA, 50/60 Hz	110 V-250 V, CA, 50/60 Hz
Weight	2,8Kg	2,2Kg	2,8Kg	6,5Kg	5,5Kg
Dimensions	90 x 90 x 100 mm	130 x 130 x 122 mm	200 x 140 x 140mm	298 x 240 x 273 mm	222 x 222 x 255 mm
Construction	Metal	Metal	Metal	Metal Waterproof	Metal Waterproof
Time to Charge	4-5 hours	4-5 hours	6 Hours	5-6 hours	

OREGON 40 RGBW

PAR LED

LIGHTING

BE BOLD. BE BRIGHT

The Audibax Oregon 40 is a par beam spotlight with RGBW halo effect, emitting a powerful LED light source for versatile color combinations. Featuring a 40W 4-in-1 COB light lens and 12 RGB effect LEDs, it creates a fantastic lighting experience. Operates in DMX512, master-slave, standalone, and sound modes with a 4-degree optical system.



OREGON 40 RGBW

PAR LED

LIGHTING

SPECIFICATIONS

MODEL	OREGON 40
Type	Spotlight Led
DMX Control	DMX 512
Manual Control	Rear Pannel
Light Source	1 x 40W COB LED 4° + 12 RGB Ring
Channel DMX	7/11CH
Strobe Type	1-25 Fps
Dimming	0-100%
Palet Color Mix	RGBW
Effects	Ring LED RGB
AC Connector Type	PowerCon -Schuko
DMX Conector	DMX 3 Pin
Dimensions	190 x 125 z 192.5 mm
Solutions	Rental Hospitality Leisure Sport & Wellness



LED BARS

Illuminate Your Imagination: Transform Any Space with Our LED Bars. From vibrant hues to dynamic effects, our LED bars redefine ambient lighting. Unleash the spectrum of possibilities and create an atmosphere that resonates. Elevate your events and experiences with the versatility and brilliance of our LED bars – where light meets innovation, and every setting becomes a canvas.





BAR SERIES

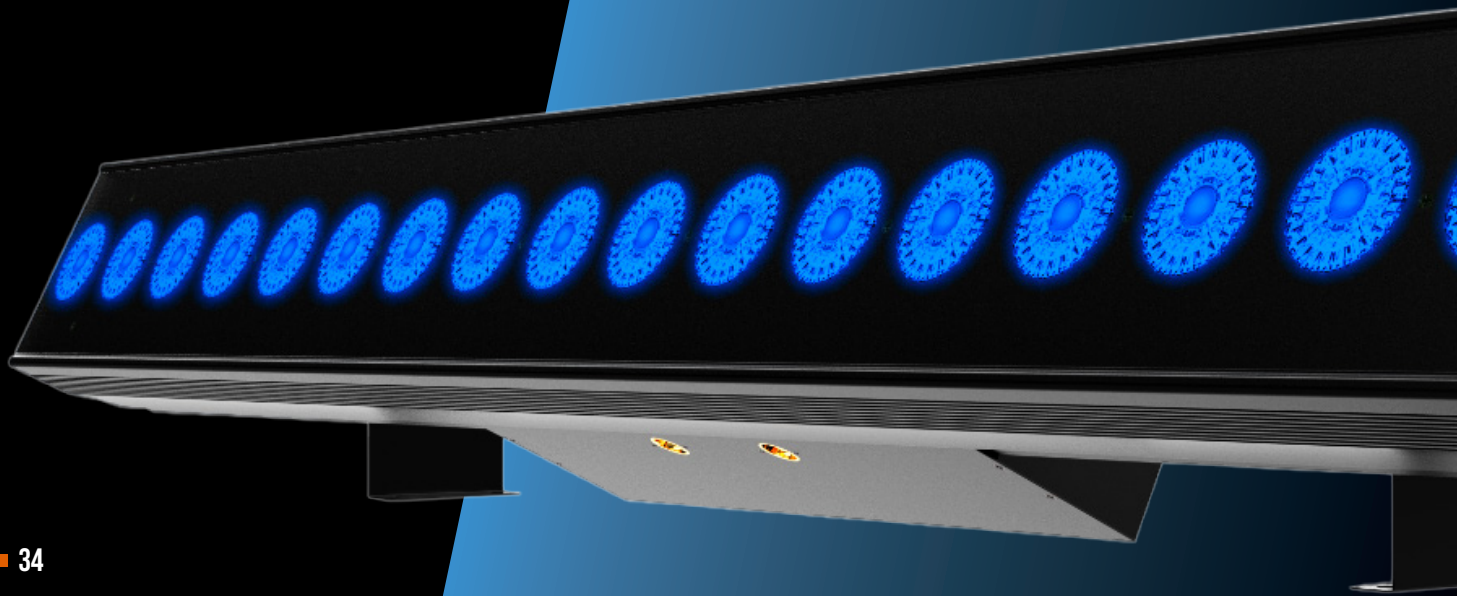
LED BARS

LIGHTING

LED BAR

LIGHT YOUR WORLD UP

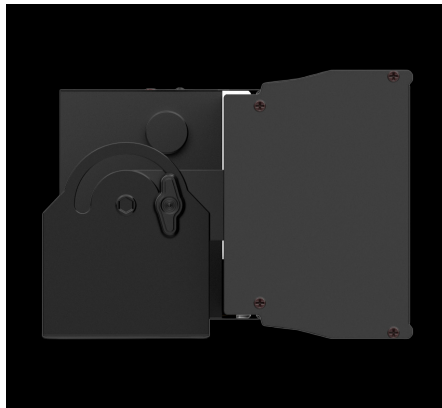
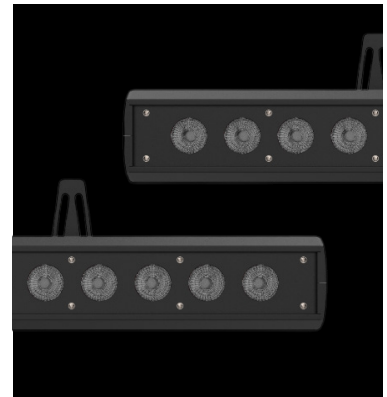
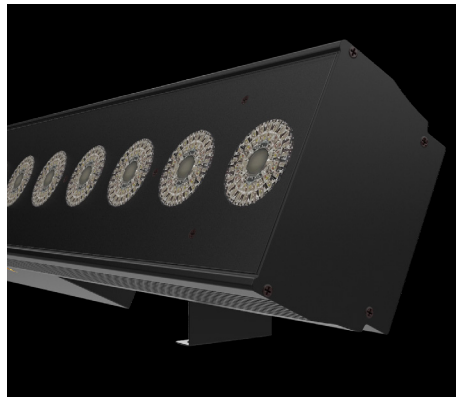
Illuminate Your Imagination: Transform Any Space with Our LED Bars. From vibrant hues to dynamic effects, our LED bars redefine ambient lighting. Unleash the spectrum of possibilities and create an atmosphere that resonates. Elevate your events and experiences with the versatility and brilliance of our LED bars – where light meets innovation, and every setting becomes a canvas.



BAR SERIES

LED BARS

LIGHTING
LED BAR

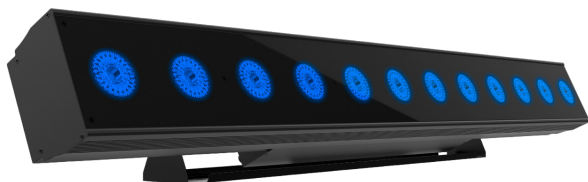


BAR SERIES

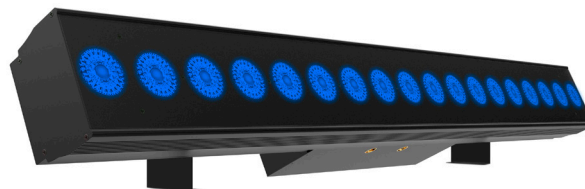
LED BARS

LIGHTING

LED BAR



Bar Event 1212 RGBWAUV
WIRELESS LED BAR + BATTERY



Bar 1812 RGBWAUV
LED BAR



Bar 1818 RGBWAUV
LED BAR



Thunder Bar 432
PIXEL LIGHTING BAR

BAR SERIES

SPECIFICATIONS

LIGHTING

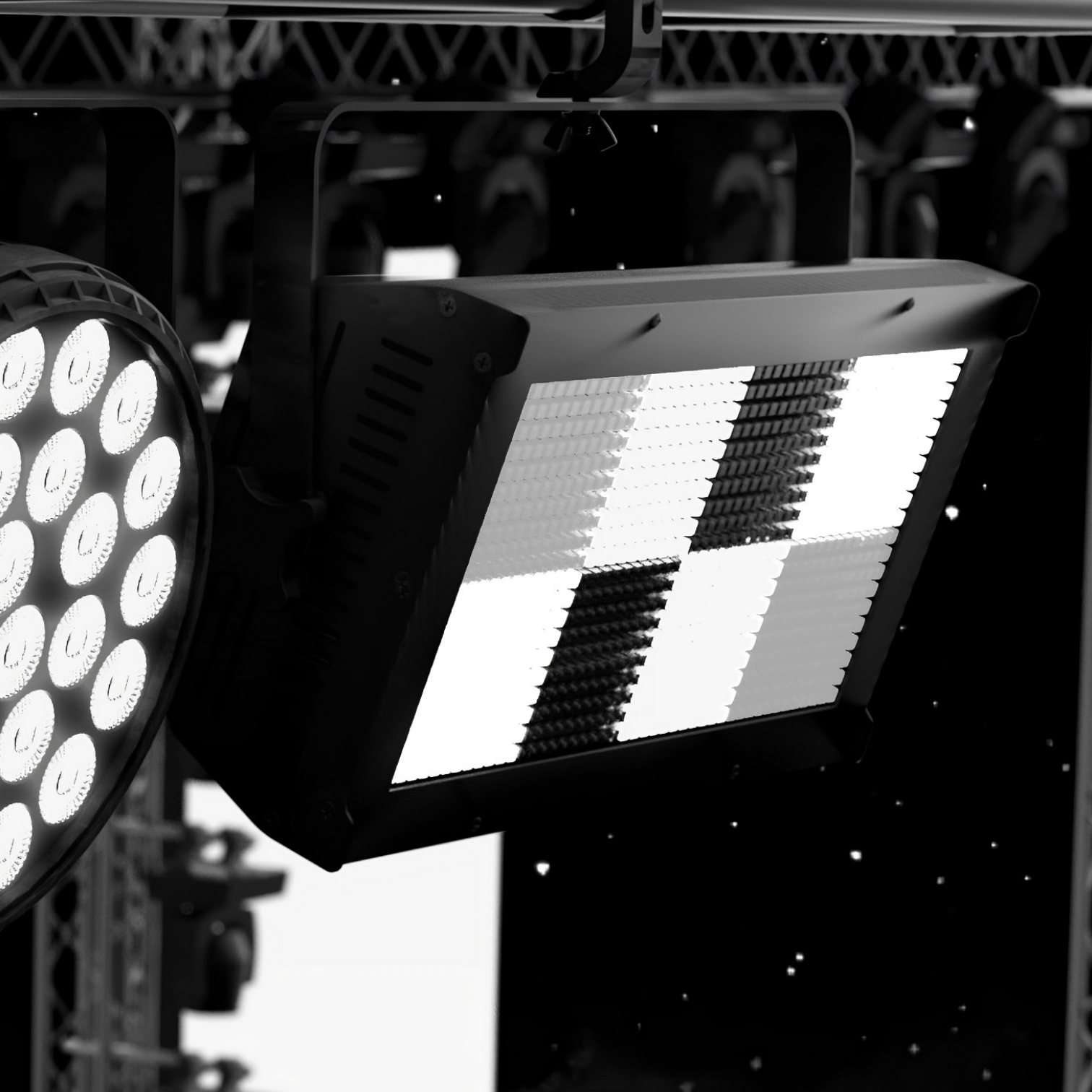
LED BAR

MODEL	BAR 1812	BAR 1818	BAR EVENT 1212	THUNDER BAR 432
Type	Led Bar	Led Bar	Led Bar	Led Bar
DMX Control	DMX 512	DMX 512	DMX 512	DMX 512
Manual Control	Rear Pannel	Rear Pannel	Rear Pannel	Rear Pannel
Light Source	18x12W RGBWAUV 6 in 1 Led Bean 40°	18x18W RGBWAUV 6 in 1 Led Bean 40°	12x12W RGBWAUV 6 in 1 Led Bean 40°	144 x3W Bean 45°
Channel DMX	6/10CH	6/10CH	6/10CH	3/7/52CH
Strobe Type	1-20 Fps	1-20 Fps	1-20 Fps	1-30 Fps
Dimming	0-100%	0-100%	0-100%	0-100%
Palet Color Mix	RGBWA+UV	RGBWA+UV	RGBWA+UV	RGB
Effects	N/A	N/A	N/A	Pixelable in 13 sectors
Battery Supply	N/A	N/A	4 hours	N/A
Wireless Control	Remote control	No	Wireless & remote control	No
AC Connector Type	Terminal Schuko	IEC - Schuko	IEC - Schuko	PowerCon -Schuko
DMX Conector	DMX 3 Pin	DMX 3 Pin	DMX 3 Pin	DMX 3 Pin
Power Supply	90-240V AC / 50-60Hz	90-240V AC / 50-60Hz	90-240V AC / 50-60Hz	90-240V AC / 50-60Hz
Weight	7Kg	7Kg	10Kg	3.5kg
Dimensions	1000 x 101 x 138 mm	1000 x 101 x 138 mm	1000 x 83 x 157 mm	415 x 70 x 110 mm
Construction	Metal	Metal	Metal	Metal
Solutions	Rental Hospitality Leisure Sport & Wellness	Rental Hospitality Leisure Sport & Wellness	Rental Hospitality Leisure Sport & Wellness	Rental Hospitality Leisure Sport & Wellness

STROBES

Elevate your creativity and transform any space into a pulsating canvas of colors and motion. Unleash the magic and let the energy flow through every beat with our strobes collection. Don't just light up a room, command attention and create an experience that lingers in the memories of all who witness the spectacle. From bold and vibrant to subtle and elegant, tailor the lighting to suit any mood or occasion.





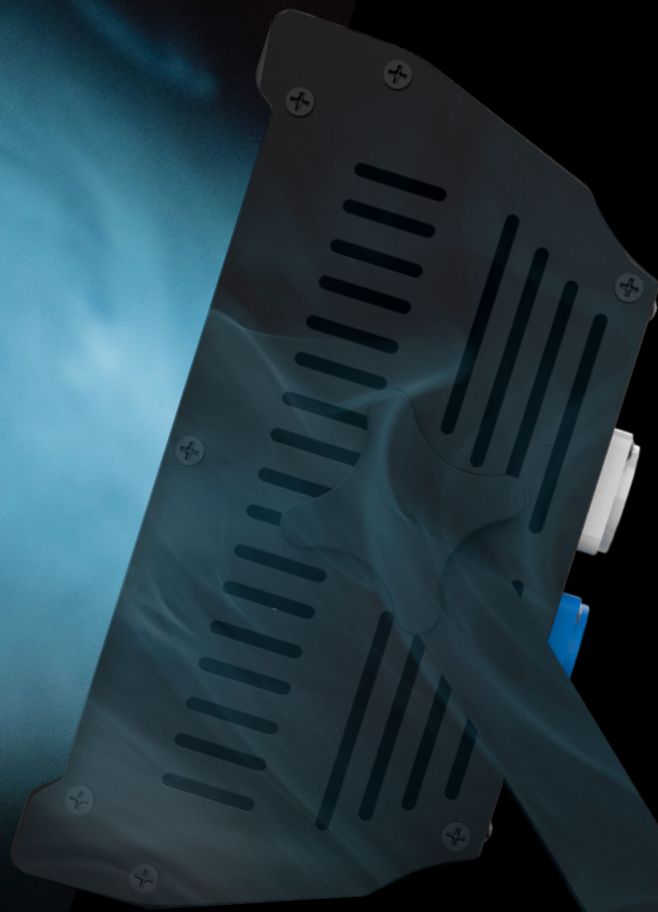
THUNDER SERIES

LED STROBE

LIGHTING
STROBES

A BRIGHT IDEA

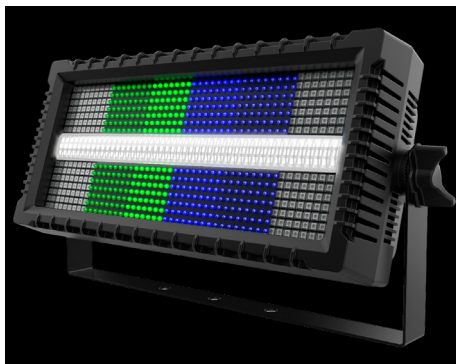
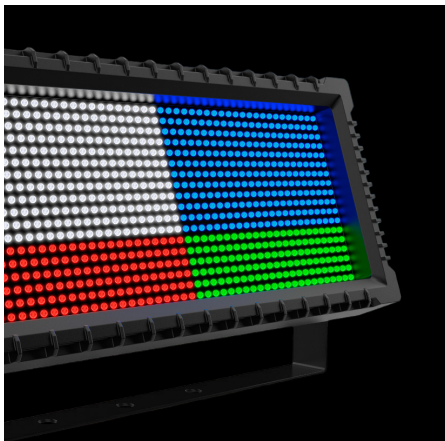
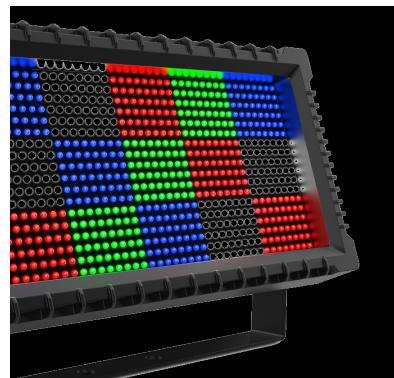
Explore the Audibax Thunder series, renowned for its powerful strobe LEDs and advanced pixel-mapping system, producing captivating RGB effects. Immerse your events in the brilliance of Strobe LED Wash lights, redefining visual impact with unmatched intensity.



THUNDER SERIES

LED STROBE

LIGHTING
STROBES



THUNDER SERIES

LED STROBE

LIGHTING
STROBES



Thunder 450 RGB

LED STROBE

Thunder 350 RGB

LED STROBE



Thunder 250 RGB

LED STROBE

THUNDER SERIES

SPECIFICATIONS

LIGHTING STROBES

MODEL	THUNDER 250 RGB	THUNDER 350 RGB	THUNDER 450 RGB
Type	Led Strobe	Led Strobe	Led Strobe
DMX Control	DMX 512	DMX 512	DMX 512
Manual Control	Rear Pannel	Rear Pannel	Rear Pannel
Light Source	960 x 0,5W LED SMD 5050	864 x 0,4W LED Beam 120°	768x0,4W RGB + 216x1W White Leds
Channel DMX	3/9/24CH	5/13/54CH	6/16/24CH
Strobe Type	1-30 Fps	1-30 Fps	1-30 Fps
Dimming	32 Bit 0-100%	0-100%	0-100%
Palet Color Mix	RGB	RGB	RGB + White Strobo
Effects	Pixelable in 8 sectors	Pixelable in 18 sectors	Pixelable in 12 sectors
AC Connector Type	PowerCon -Schuko	PowerCon -Schuko	PowerCon -Schuko
DMX Conector	DMX 3 Pin	DMX 3 Pin	DMX 3 Pin
Power Supply	AC110-220V, 50-60HZ	AC110-220V, 50-60HZ	AC110-220V, 50-60HZ
Dimensions	415 x 100 x 220 mm	460 x 124 x 230 mm	460 x 124 x 230 mm
Weight	5,5Kg	4,3 Kg	4.3 Kg
Construction	Metal	Metal	Metal
Solutions	Rental Hospitality Leisure Sport & Wellness	Rental Hospitality Leisure Sport & Wellness	Rental Hospitality Leisure Sport & Wellness

OUTDOORS





WATER SERIES

LED SPOTLIGHT

LIGHTING

OUTDOOR

A BRIGHTER WAY TO SHINE

Explore the Water Series, perfect for outdoor use with IP65 protection. Choose from par LED and wash models. An excellent option for quality and flexibility in outdoor lighting, featuring protection, control, and performance. Manage it effortlessly through DMX for vibrant and brilliant colors.



WATER SERIES

LED SPOTLIGHT

LIGHTING
OUTDOOR



WATER SERIES

LED SPOTLIGHT

LIGHTING

OUTDOOR



Water 90

LED spotlight



Water 180

LED spotlight



Wash Water 168

LED spotlight

WATER SERIES

SPECIFICATIONS

LIGHTING

OUTDOOR

MODEL	WATER 90	WASH WATER 168	WATER 180
Type	Spotlight Led	Wash spotlight Led	Spotlight Led
DMX Control	DMX 512	DMX 512	DMX 512
Manual Control	Rear Pannel	Rear Pannel	Rear Pannel
Light Source	9x10W RGBW LED Beam 30°	21 x 8W LED RGBW 4 in 1	18x10W RGBW LED Beam 30°
Channel DMX	4/8CH	4/8CH	4/8CH
Strobe Type	1-20 Fps	1-20 Fps	1-20 Fps
Dimming	0-100%	0-100%	0-100%
Palet Color Mix	RGBW	RGBW	RGBW
IP Protection	IP 65	IP 65	IP 65
AC Connector Type	Terminal Schuko	Terminal Schuko	Terminal Schuko
DMX Conector	DMX 3 Pin	DMX 3 Pin	DMX 3 Pin
Power Supply	110 V-250 V, CA, 50/60 Hz	AC100-240V 50/60Hz	110 V-250 V, CA, 50/60 Hz
Dimensions	225 x 225 x 130 mm	380 x 195 x 190 mm	230 x 230 x 100mm
Construction	Metal Waterproof	Metal Waterproof	Metal Waterproof
Solutions	Rental Hospitality Leisure Sport & Wellness	Rental Hospitality Leisure Sport & Wellness	Rental Hospitality Leisure Sport & Wellness

EFFECT MACHINES

Unleash the Spectacle: Ignite Atmosphere with Our Effect Machines. Our effect machines redefine the art of ambiance. Elevate your events with a touch of magic, creating moments that linger in memory. Command the elements and shape the experience with our cutting-edge effects machines – where every occasion becomes an extraordinary spectacle.





SPARK 600

SPARK MACHINE

LIGHTING
EFFECT MACHINES

NEVER FORGET THE ESSENCE OF YOUR SPARK

Ignite your events with Audibax Spark 600, a cold spark machine producing sparks reaching 2-4 meters high, offering a distinct visual edge to your shows. Equipped with a 100g tank, it provides up to 20 seconds of continuous pulsation and a multi-shot duration of up to 20 minutes based on consumable load. Operate wirelessly, via DMX, or manually for seamless control.



SPARK 600

SPARK MACHINE

LIGHTING

EFFECT MACHINES

SPECIFICATIONS

MODEL	SPARK 600
Type	Spark Machine
DMX Control	DMX
Remote Control	RF Controller
Power Work	500W
Tank Consumable	200g
Pre-Heat work time (in - min)	10 min
Heat time Operate	5 m
Flow Control	Yes
Consumption Ratio	20 seg
Production Capacity	2m to 5m
Work Position	Floor
DMX Conector	2 DMX mode Channel 1 warm up Channel 2 spark output & spark volume
Proteccion Consumable	Fluid-less
Power Supply	220-240V 50/60Hz
Weight	5 Kg
Dimensions	200 x 270 x 200 mm
Construction	Metal
Solutions	Rental Hospitality Leisure Sport & Wellness



HAZER & FOG

HAZE SERIES

LIGHTING
EFFECT MACHINES

BEYOND THE HAZE, INTO AMAZEMENT

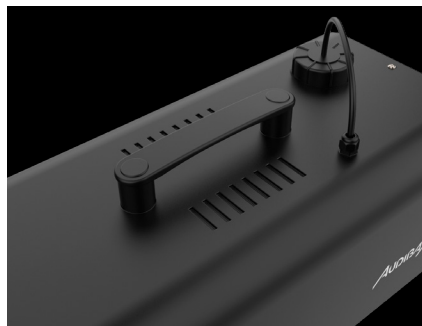
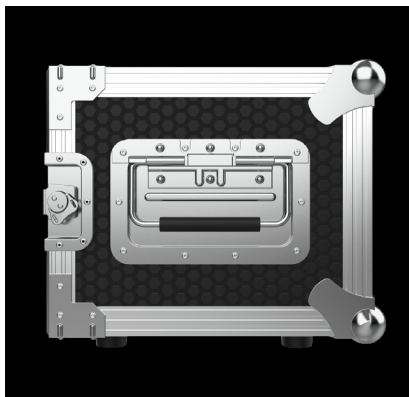
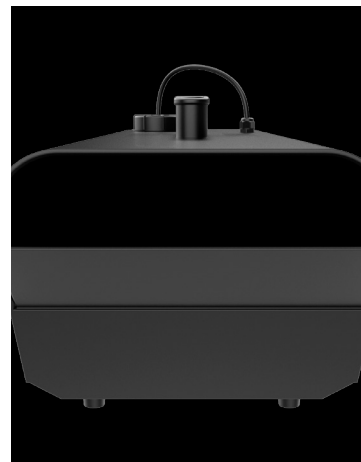
Elevate your events with Audibax Haze Series, professional fog machines creating a subtle mist, offering the ideal touch for a unique atmosphere in your shows. Operate seamlessly in DMX mode, providing precise control for a tailored event experience.



HAZER & FOG

HAZE SERIES

LIGHTING
EFFECT MACHINES



HAZER & FOG

HAZE SERIES

LIGHTING
EFFECT MACHINES



Haze 1200

HAZER MACHINE

Haze 1500 PRO

HAZER MACHINE



HAZER & FOG

SPECIFICATIONS

LIGHTING

EFFECT MACHINES

MODEL	HAZE 1200	HAZE 1500 PRO
Type	Hazer Machine	Hazer Machine
DMX Control	DMX	DMX
Remote Control	Wired Controller	Front Pannel
Power Work	1200W	1500W
Tank Consumable	1,2L	3,1L
Pre-Heat work time (in - min)	3 min	2 min
Heat time Operate	3 min	2 min
Flow Control	Yes	Yes
Consumption Ratio	@ full volume - Appr.20ml/min	N/A
Production Capacity	150m ³ /min	350 m ³ /min
Work Position	Floor	Floor
Channel DMX	2 DMX mode Channel 1 smoke output Channel 2 fan speed	2 DMX mode Channel 1 smoke output Channel 2 fan speed
Fan Control	Yes	Yes
Power Supply	220-240V CA/50Hz	AC110-240v 50/60HZ
Weight	6,1Kg	15,8 Kg
Dimensions	535 x 210 x 230 mm	600 x 370 x 250 mm
Construction	Metal	Metal & Flightcase enclosure
Solutions	Rental Hospitality Leisure Sport & Wellness	Rental Hospitality Leisure Sport & Wellness

HAZER & FOG

FOG MACHINE

LIGHTING
EFFECT MACHINES

MIST OF MARVELS

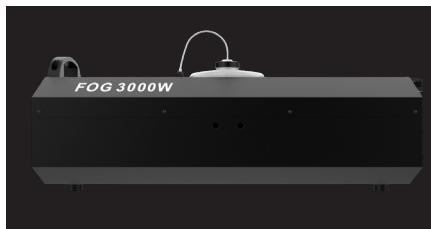
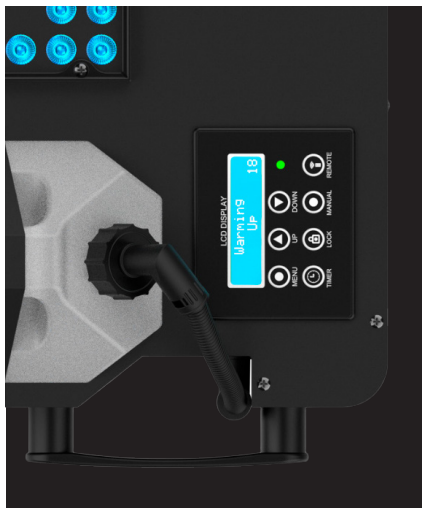
Experience an unparalleled ambiance with Audibax's Smoke Series, a line of professional smoke machines designed to enhance events. With versatile features, these smoke generators effortlessly craft unique atmospheres, making them ideal for parties and events. Dive into a world of seamless smoke production, where each unit boasts precision engineering for reliability and performance. Transform any space into a captivating realm. Elevate your events with the sophistication of Audibax Smoke Series—where innovation meets celebration.



HAZER & FOG

FOG MACHINE

LIGHTING
EFFECT MACHINES



HAZER & FOG

FOG MACHINE

LIGHTING
EFFECT MACHINES

Smoke 3000

FOG MACHINE



Smoke Geyser 2000

FOG MACHINE

HAZER & FOG

SPECIFICATIONS

LIGHTING

EFFECT MACHINES

MODEL	SMOKE GEYSER 2000	SMOKE 3000
Type	Fog Machine	Fog Machine
DMX Control	DMX	DMX
Remote Control	RF Controller	Wired & Wireless Controller
Power Work	2000W	3000W
Tank Consumable	2,5L	4L
Pre-Heat work time (in - min)	10 min	- 4 min
Heat time Operate	4 min	N/A
Flow Control	Yes	N/A
Consumption Ratio	150ml/min	N/A
Production Capacity	700m3/min	145m3/Min
Work Position	Floor & Upper	Floor
Channel DMX	7 DMX mode Channel 1 smoke level Channel 2 master dimming Channel 3 Red Channel 4 Green Channel 5 Blue Channel 6 Strobe Channel 7 Auto	N/A
Added FX	RGB Led	N/A
Power Supply	AC 220 240 V, 50/60 Hz	AC 220 240 V, 50/60 Hz
Weight	8.2 Kg	10.8 Kg
Dimensions	450 x 310 x 210 mm	760 x 360 x 310 mm
Construction	Metal	Metal
Solutions	Rental Hospitality Leisure Sport & Wellness	Rental Hospitality Leisure Sport & Wellness

HAZER & FOG

FOG MACHINE

LIGHTING
EFFECT MACHINES

PUFF, PASS, IMPRESS: EFFECTS THAT INHALE STYLE AND EXHALE GLAMOUR!



Elevate your events with Audibax Volcano 1500 RGBW, a high-performance effects machine seamlessly combining CO2-style smoke and vibrant LED illumination. With 24 powerful 10W RGBW LEDs and a 3.5-liter tank, it delivers the distinct appearance you desire. Effortlessly control and time your effects with the user friendly remote and digital display. Unleash the extraordinary in your shows and events.

HAZER & FOG

FOG MACHINE

LIGHTING EFFECT MACHINES

SPECIFICATIONS


MODEL	VOLCANO 1500
Type	Fog Machine
DMX Control	DMX
Remote Control	Ir Controller
Power Work	1500W
Tank Consumable	3,5L
Pre-Heat work time (in - min)	4 min
Heat time Operate	4 min
Production Capacity	530 m3/min
Work Position	Floor & Upper
Channel DMX	8 DMX mode Channel 1 smoke level Channel 2 master dimming Channel 3 Red Channel 4 Green Channel 5 Blue Channel 6 Amber Channel 7 Strobe Channel 8 Auto
Added FX	RGB Led
Power Supply	AC110-240v 50/60HZ
Weight	9.1 Kg
Dimensions	370 x 190 x 350 mm
Construction	Metal
Solutions	Rental Hospitality Leisure Sport & Wellness



DMX SERIES

DMX CONTROLLERS

LIGHTING
CONTROLLERS



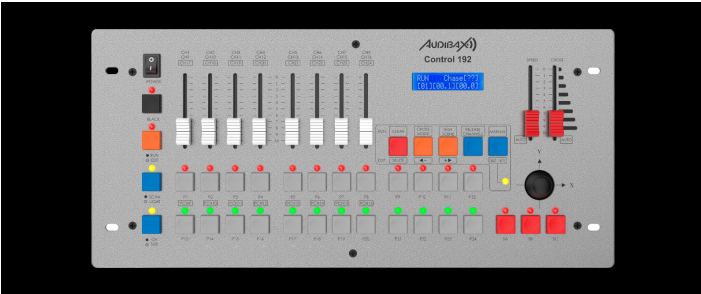
Master the Symphony of Light: Elevate Control with Our DMX Controllers. Unleash your creativity and command the dance of illumination with precision. Our DMX controllers redefine the art of lighting, offering a seamless fusion of technology and artistry. Shape the mood, control the ambiance – experience a new level of lighting mastery with our cutting-edge DMX controllers, where every moment is yours to orchestrate.

SHOW WHAT YOU LIGHTEN UP

DMX SERIES

DMX CONTROLLERS

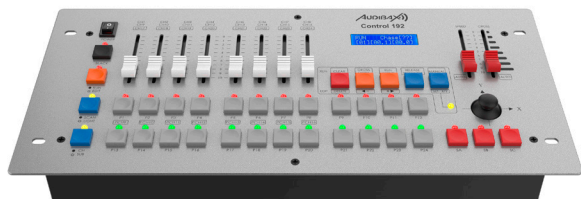
LIGHTING
CONTROLLERS



DMX SERIES

DMX CONTROLLERS

LIGHTING
CONTROLLERS



Control 192

DMX Controller



Control 384

DMX Controller



Easy DMX

DMX Controller



DMX Event 5

DMX Controller

DMX SERIES

SPECIFICATIONS

LIGHTING CONTROLLERS

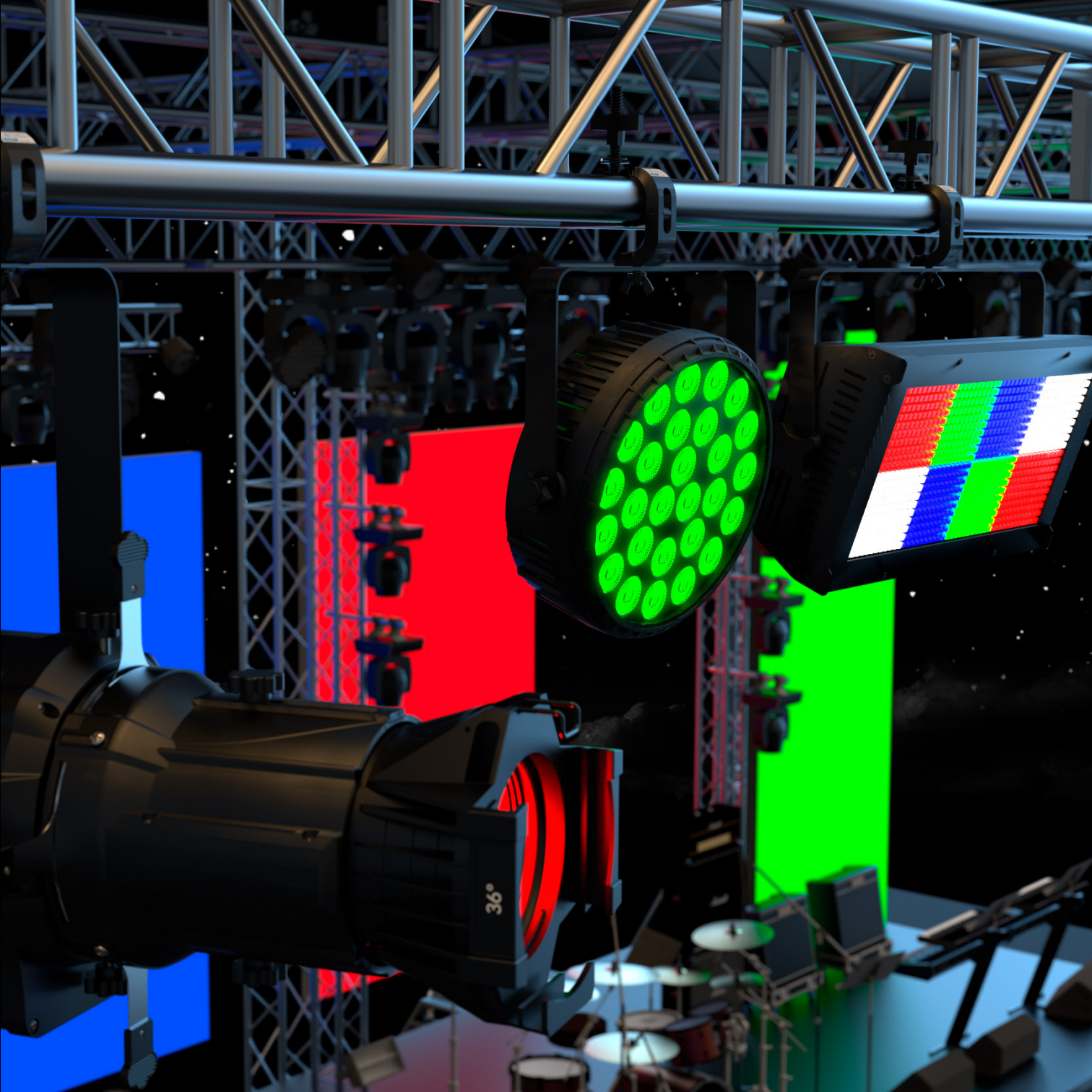
MODEL	EASY DMX	DMX EVENT 5	CONTROL 192	CONTROL 384
Type	DMX Controller	DMX Controller	DMX Controller	DMX Controller
DMX Control	DMX 512	DMX 512	DMX 512	DMX 512
Manual Control	Wired & Wireless controller	Wired & Wireless controller	Wired Controller	Wired Controller
Channel DMX	7 Universes Select	30CH	192CH	384CH
Faders	Wireless DMX Transmitter or Receiver	10 programs	8 Faders Channel A/B paggin	16 faders Channel
Chases	Frequency: 2.4 GHz	7 Universes Select	6 chases	6 chases
Scenes	N/A	Oled Display	480 scenes	240 scenes
Banks	N/A	DMX Wired Adaptor	30 banks 8 freely	34 banks 8 freely
Battery Supply	Adapter 5W	Battery 100 Hours	N/A	N/A
Wireless Control	Wireless & remote control	Wireless & Rc control & APP	No	No
AC Connector Type	N/A	N/A	IEC - Shucko	IEC - Shucko
DMX Connector	DMX 3 Pin	DMX wireless 2,4G	DMX 3 Pin	DMX 3 Pin
Power Supply	5 Watts CC / 500 mA via adapter	DC 5V	220-240V 50/60Hz	DC 9V-12V
Weight	0,18 Kg	1,5 Kg	3,25 Kg	3,0 Kg
Dimensions	212 x 18 x 18 mm	150 x 130 x 45 mm	483 x 178 x 80 mm	520 x 183 x 73 mm
Construction	Metal	Metal	Metal	Metal
Solutions	Rental Hospitality Leisure Sport & Wellness	Rental Hospitality Leisure Sport & Wellness	Rental Hospitality Leisure Sport & Wellness	Rental Hospitality Leisure Sport & Wellness

ACCESSORIES

Find your dance partner and browse through our wide range of lighting accessories to find the spark that will illuminate your path.

Discover your best accessories!





ACP SERIES

TRUSS CLAMPS

ACCESSORIES

LIGHTING



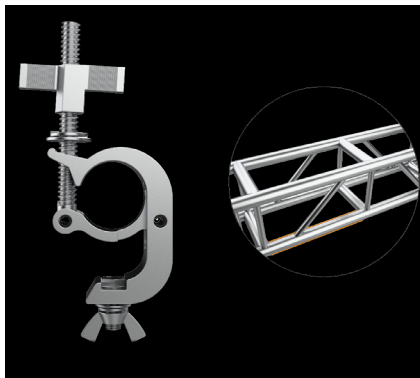
HOLD TIGHT, SHINE
BRIGHT - **ACP SERIES** FOR
UNMATCHED STABILITY

ACP SERIES

TRUSS CLAMPS

ACCESSORIES

LIGHTING



ACP SERIES

TRUSS CLAMPS

ACCESSORIES

LIGHTING



ACP-354075BK

75K TRUSS CLAMPS



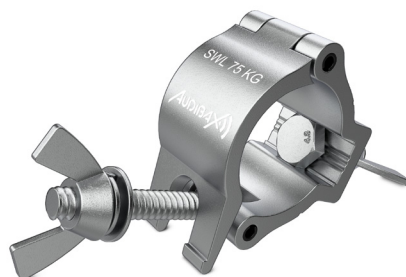
ACP-4058250BK

250K TRUSS CLAMPS



ACP-4452250BK

250K TRUSS CLAMPS



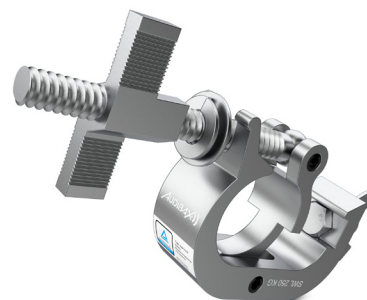
ACP-354075S

75K TRUSS CLAMPS



ACP-4058250S

250K TRUSS CLAMPS



ACP-4452250S

250K TRUSS CLAMPS

ACP SERIES

TRUSS CLAMPS

ACCESSORIES

LIGHTING



ACP-4851100BK

100K TRUSS CLAMPS



ACP-4852100BK

100K TRUSS CLAMPS



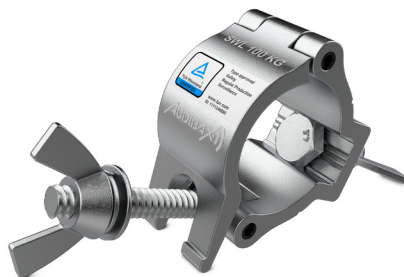
ACP-4852100BK+K

100K TRUSS CLAMPS



ACP-4851100S

100K TRUSS CLAMPS



ACP-4852100S

100K TRUSS CLAMPS



ACP-4852100S+K

100K TRUSS CLAMPS

ACP SERIES

SPECIFICATIONS

ACCESSORIES

LIGHTING

MODEL	SPECIFICATIONS
Audibax ACP-4058250	Material: Aluminum Diameter: 40-58 mm Safe Working Load (SWL): Up to 250 kg Quality Certificate TÜV
Audibax ACP-4851100	Material: Aluminum Diameter: 48-51 mm Safe Working Load (SWL): Up to 100 kg Quality Certificate TÜV
Audibax ACP-354075	Material: Aluminum Diameter: 35-40 mm Safe Working Load (SWL): Up to 75kg Quality Certificate TÜV
Audibax ACP-4852100+K	Material: Aluminum Diameter: 48-52 mm Safe Working Load (SWL): Up to 100 kg Quality Certificate TÜV
Audibax ACP-4452250	Material: Aluminum Diameter: 44-52 mm Safe Working Load (SWL): Up to 250 kg Quality Certificate TÜV
Audibax ACP-4852100	Material: Aluminum Diameter: 48-52 mm Safe Working Load (SWL): Up to 100 kg Quality Certificate TÜV

**SHINE BRIGHT,
DREAM BOLDER!**
**AUDIBAX, WHERE
EVERY LIGHT
SPARKS A WORLD
OF POSSIBILITIES**





PRODUCT CATALOG 2024

SALES@AUDIBAX.COM - WWW.AUDIBAX.COM
WWW.THEGROUPEMH.COM

All information included in this catalog is intended to serve as a general guide. The company does not assume the responsibility of any errors on it. Audibax reserves the right to amend these specifications and designs without prior notice. These specifications and designs are not contractually valid.

Please, contact us for more detailed information.