

AUDIBAX

A DJ with short blonde hair and sunglasses is performing at a club. The scene is lit with a warm orange glow, and the DJ is wearing a dark, patterned shirt with headphones around their neck. The DJ is focused on the equipment, which includes two turntables and a mixer. The background is dark with some faint lights and a large, stylized logo in the top left corner.

AUDIO CATALOG 2024

DESIGNED IN SPAIN

ILUMINATING THE SOUND

Audibax, narrows the distance between high-quality sound and lighting products and consumers, ensuring both quality and proximity. As a one stop supplier, our mission is to connect you with the very best products out there and bring them right to your fingertips. With Audibax, get ready to take your entertainment to the next level with the finest products.

Our extensive product range spans across various categories, encompassing audio systems, lighting equipment, and a wide array of accessories. At Audibax, we take pride in our dedication to providing our partners with a diverse selection of solutions tailored to meet their specific needs. Driven by our commitment to innovation and technology, we are dedicated to elevating and enriching our customers' experiences.

AUDIBAX IS A REGISTERED
BRAND OF THE MH GROUP

MHGROUP

AUDIBAX 

**ILLUMINATING
THE
SOUND**





TABLE OF CONTENTS

PA SPEAKERS	5	DIGITAL MATRIX/PROCESSORS	120
ACTIVE SPEAKERS	6	DIGITAL MATRIX	122
PASSIVE SPEAKERS	28	PROCESSORS	126
PA SYSTEMS	36	DANTE CONVERTER	130
		WALL PANELS	136
INSTALLATION SPEAKERS	53	MICROPHONES	143
WALL MOUNT SPEAKERS	54	WIRELESS MICROPHONES	144
OUTDOOR SPEAKERS	70	WIRED MICROPHONES	154
CEILING SPEAKERS	82		
PENDANT SPEAKERS	88	DI BOXES/TOOLS	156
AMPLIFIERS	90	DI BOXES	158
INSTALLATION AMPLIFIERS	92	TOOLS	164
MIXING AMPLIFIERS /PRE AMPS	110	AUDIO HARDWARE	170

PA SPEAKERS

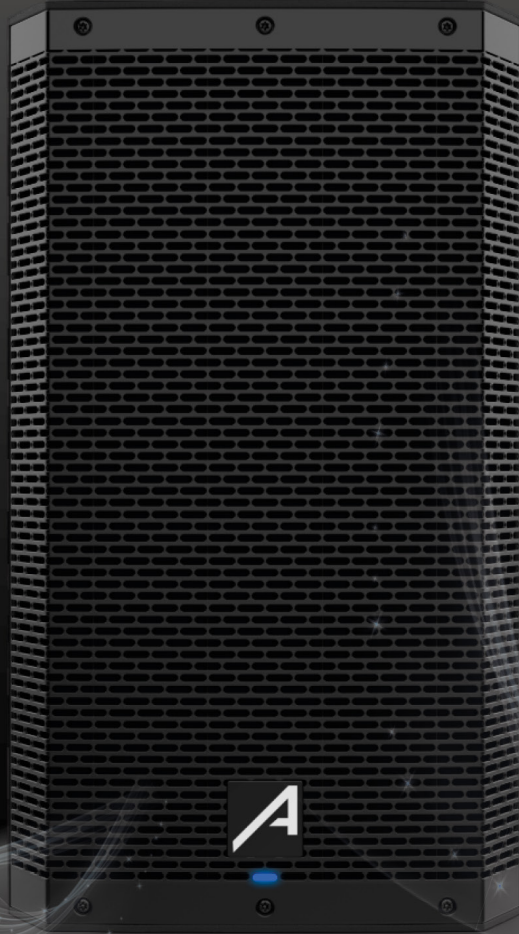
Immerse Your Audience in Sonic Brilliance with Our PA Speakers. Feel the pulse, hear the roar – our speakers redefine the art of audio. Elevate any event, from heart-pounding concerts to crystal-clear presentations, with cutting-edge technology and unmatched sonic prowess. Step into a world where sound becomes an experience, not just a sensation. Unleash the extraordinary with our premium PA speakers – where innovation meets the symphony of excellence.



DSP SERIES

ACTIVE SPEAKERS

SOUND/PA
SPEAKERS



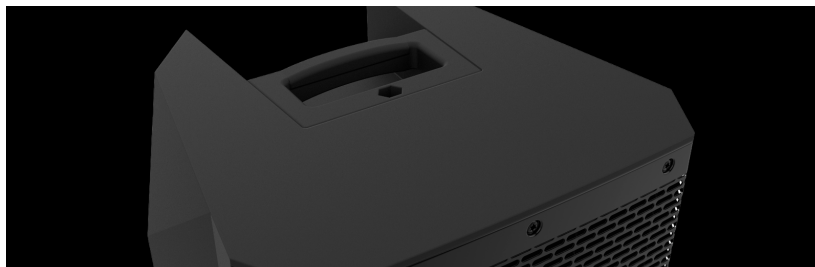
WHERE THE MAGIC LIVES

The new DSP range from Audibax represents a leap in quality when it comes to the brand's active speakers. The high-quality internal DSP provides the possibility to modify parameters such as three-band equalization or select the playback mode according to the needs of the moment (Music, Live, DJ, Speech, etc.). Built with top-notch materials and components, the new Audibax DSP ensures durability and sound quality in all necessary applications, whether for live music or music playback.

DSP SERIES

ACTIVE SPEAKERS

SOUND/PA SPEAKERS



DSP SERIES

ACTIVE SPEAKERS

SOUND/PA SPEAKERS



DSP8
2 WAYS ACTIVE
SPEAKER



DSP10
2 WAYS ACTIVE
SPEAKER



DSP12
2 WAYS ACTIVE
SPEAKER



DSP15
2 WAYS ACTIVE
SPEAKER

DSP SERIES

ACTIVE SPEAKERS

SOUND/PA SPEAKERS



DSP12s
ACTIVE
SUBWOOFER



DSP15s
ACTIVE
SUBWOOFER



DSP18s
ACTIVE
SUBWOOFER

DSP SERIES

SPECIFICATIONS

SOUND/PA SPEAKERS

MODEL	DSP8	DSP10	DSP12	DSP15	DSP12S	DSP15S	DSP18S
Type	Active 2 Ways	Active 2 Ways	Active 2 Ways	Active 2 Ways	Active	Active	Active
Woofer Driver	8"	10"	12"	15"	12"	15"	18"
Woofer voice coil	VC2" 400Z	2"	2,75"	3"	3"	3"	3"
HF Driver type	Horn	Horn	Horn	Horn	N/A	N/A	N/A
HF Driver Dimensions	1" titanium	1" titanium	1,35" titanium	1,75" titanium	N/A	N/A	N/A
Frequency Response	58Hz-20KHz	55Hz-20KHz.	48Hz-20KHz	45Hz-20KHz	26Hz-800Hz	26Hz-800Hz	26Hz-800Hz
Maximum SPL (dB)	125dB	126dB	130dB	132dB	128dB	130dB	131dB
Sensitivity (1w/1m)	93dB	95dB	96dB	97dB	N/A	N/A	N/A
Dispersion	90° x 60°	90° x 60°	90° x 60°	90° x 60°	N/A	N/A	N/A
Mount	Stand	Stand	Stand	Stand	Stand	Stand	Stand
Mount Type	Flange 36mm & Flying points	Flange 36mm & Flying points	Flange 36mm & Flying points	Flange 36mm & Flying points	Flange 36mm Up pole	Flange 36mm Up pole	Flange 36mm Up pole
Mic/Line Inputs	2	2	2	2	2	2	2
Mic/Line inputs connector	XLR/Jack Combi	XLR/Jack Combi	XLR/Jack Combi	XLR/Jack Combi	XLR/Jack Combi	XLR/Jack Combi	XLR/Jack Combi
AUX inputs	Mini Jack 3,5 Stereo	Mini Jack 3,5 Stereo	Mini jack + RCA	Mini jack + RCA	XLR	XLR	XLR
Line outputs	1	1	1	1	2	2	2
Line outputs connector	XLR	XLR	XLR	XLR	XLR	XLR	XLR
DSP Processor	DSP Preset	DSP Preset	DSP Preset	DSP Preset	DSP Preset	DSP Preset	DSP Preset
Bluetooth	Bluetooth+TWS	Bluetooth+TWS	Bluetooth+TWS	Bluetooth+TWS	N/A	N/A	N/A
Power Amp (RMS)	L100W+H50W	L130W+H50W	L300W+H100W	L300W+H100W	400W	500W	600W

DSP SERIES

SPECIFICATIONS

SOUND/PA SPEAKERS

MODEL	DSP8	DSP10	DSP12	DSP15	DSP12S	DSP15S	DSP18S
Power Amp max (Peak)	450W	450W	1200W	1500W	1200W	1500W	2000W
Enclosure Finish	ABS Anti-Scratch	ABS Anti-Scratch	ABS Anti-Scratch	ABS Anti-Scratch	MDF plywood	MDF plywood	MDF plywood
Power Supply	N/A	AC110V-240V	AC110V-240V	AC110V-240V	AC110V-240V	AC110V-240V	AC110V-240V
Weight	8Kg	10Kg	15,75Kg	21,3Kg	22,5Kg	30Kg	41Kg
Dimensions	310mm x 300mm x 480mm	350mm x 330mm x 560mm	420mm x 410mm x 680mm	480mm x 450mm x 760mm	550mm x 460mm x 550mm	630mm x 550mm x 620mm	680mm x 620mm x 720mm
Solutions	Rental Leisure Hospitality Sport & Wellness	Rental Leisure Hospitality Sport & Wellness	Rental Leisure Hospitality Sport & Wellness	Rental Leisure Hospitality Sport & Wellness	Rental Leisure Hospitality Sport & Wellness	Rental Leisure Hospitality Sport & Wellness	Rental Leisure Hospitality Sport & Wellness



MANHATTAN SERIES

ACTIVE SPEAKERS

SOUND/PA
SPEAKERS

SOUND THAT INSPIRES

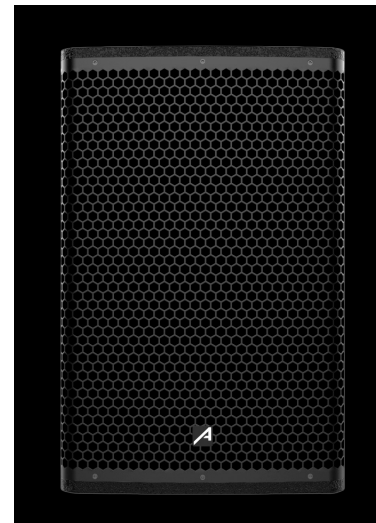
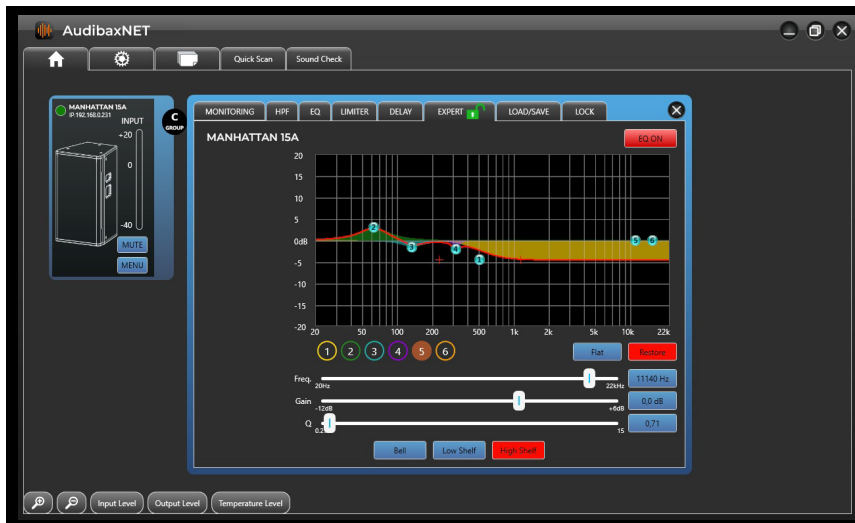
Manhattan Series are designed for uncompromising performance, our speakers incorporate a precision -engineered 2-Way Active Filter, ensuring optimal audio clarity and balance. Whether you're a music enthusiast, DJ, or professional performer, these speakers are equipped to handle the most demanding audio requirements.



MANHATTAN SERIES

ACTIVE SPEAKERS

SOUND/PA SPEAKERS



MANHATTAN SERIES

ACTIVE SPEAKERS

SOUND/PA
SPEAKERS



Manhattan 10A

2 WAYS ACTIVE
SPEAKER



Manhattan 12A

2 WAYS ACTIVE
SPEAKER



Manhattan 15A

2 WAYS ACTIVE
SPEAKER



Manhattan 18S

ACTIVE
SUBWOOFER

MANHATTAN SERIES

SPECIFICATIONS

SOUND/PA SPEAKERS

MODEL	MANHATTAN 10A	MANHATTAN 12A	MANHATTAN 15A	MANHATTAN 18S
Type	Active 2 Ways	Active 2 Ways	Active 2 Ways	Active
Woofer Driver	10"	12"	15"	18"
Woofer voice coil	2,5"	3"	3"	4"
HF Driver type	Horn	Horn	Horn	N/A
HF Driver Dimensions	1,75"	1,75"	1,75"	N/A
HF driver voice coil	4,5"	4,5"	4,5"	N/A
Frequency Response	50Hz-20KHz	48Hz-20KHz	45Hz-20KHz	35Hz-150Hz
Maximum SPL (dB)	134dB	136dB	138dB	142dB
Sensitivity (1w/1m)	95dB	96dB	97dB	97dB
Dispersion	90°H x 60°V	90°H x 60°V	90°H x 60°V	N/A
Mount	Stand	Stand	Stand	Stand
Mount Type	Flange 36mm & Flying points	Flange 36mm & Flying points	Flange 36mm & Flying points	N/A
Mic/Line Inputs	1	1	1	1
Mic/Line inputs connector	XLR/Jack Combi	XLR/Jack Combi	XLR/Jack Combi	XLR/Jack Combi
Line outputs	1	1	1	1
Line outputs connector	XLR	XLR	XLR	XLR
DSP Processor	DSP CAN BUS	DSP CAN BUS	DSP CAN BUS	DSP CAN BUS
Power Amp (RMS)	1000W	1200W	1500W	1800W
Power Amp max (Peak)	2000W	2400W	3000W	3600W
Enclosure Finish	Multilayer Pyywood	Multilayer Pyywood	Multilayer Pyywood	Multilayer Pyywood
Power Supply	AC220-240V, 50Hz	AC220-240V, 50Hz	AC220-240V, 50Hz	AC220-240V, 50Hz
Weight	17,5Kg	23Kg	30Kg	40Kg
Dimensions	320x320x515mm	380x380x620mm	450x450x715mm	560x560x655mm
Solutions	Rental Leisure Hospitality Sport & Wellness	Rental Leisure Hospitality Sport & Wellness	Rental Leisure Hospitality Sport & Wellness	Rental Leisure Hospitality Sport & Wellness

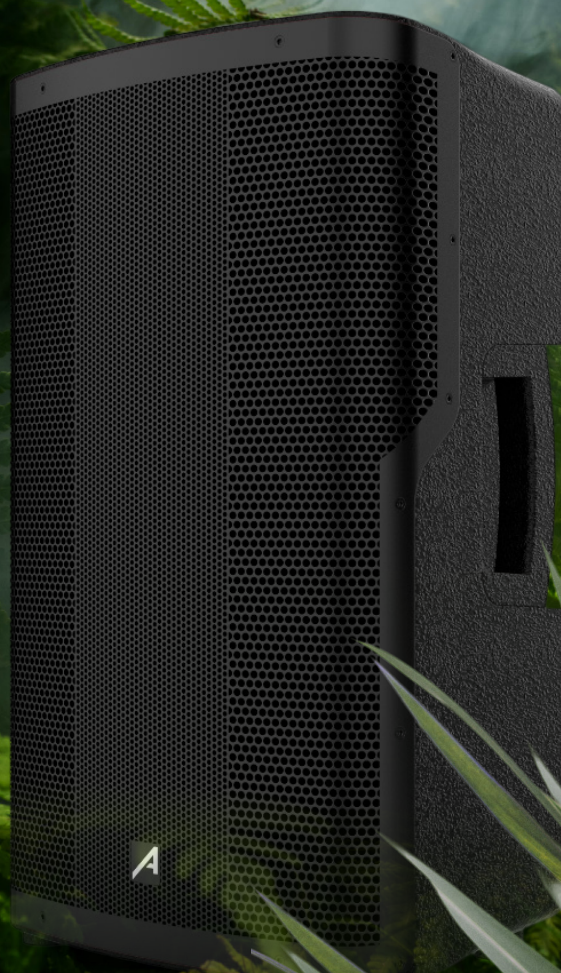
KINGSTON SERIES

ACTIVE SPEAKERS

SOUND/PA
SPEAKERS

FEEL THE FREEDOM

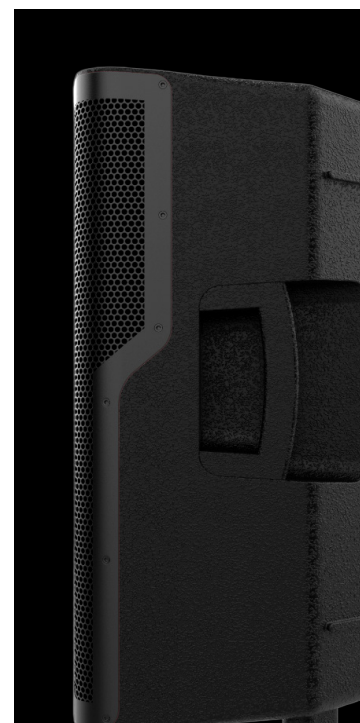
The exceptional reproduction of bass frequencies by the horn-loaded woofer establishes the Kingston series as the perfect selection for musicians, bands, entertainers, and dance schools. Additionally, it provides DJs the capability to deliver impressive sets without requiring an external subwoofer.



KINGSTON SERIES

ACTIVE SPEAKERS

SOUND/PA
SPEAKERS



KINGSTON SERIES

ACTIVE SPEAKERS

SOUND/PA
SPEAKERS



Kingston 12 DSP

2 WAYS ACTIVE
SPEAKER



Kingston 15 DSP

2 WAYS ACTIVE
SPEAKER

KINGSTON SERIES

ACTIVE SPEAKERS

SOUND/PA SPEAKERS

MODEL	KINGSTON 12 DSP	KINGSTON 15 DSP
Type	Active 2 Ways	Active 2 Ways
Woofer Driver	12"	15"
Woofer voice coil	3"	3"
HF Driver type	Horn	Horn
HF Driver Dimensions	2"	2"
HF driver voice coil	5.3"	5.3"
Frequency Response	50Hz-20KHz	45Hz-20KHz
Maximum SPL (dB)	126dB	128dB
Sensitivity (1w/1m)	95dB	96dB
Dispersion	90°H x 60°V	90°H x 60°V
Mount	Stand	Stand
Mount Type	Flange 36mm	Flange 36mm
Mic/Line Inputs	2	2
Mic/Line inputs connector	XLR/Jack Combi	XLR/Jack Combi
Line outputs	1	1
Line outputs connector	XLR	XLR
Bluetooth	BLuetooth+WPS	BLuetooth+WPS
DSP Processor	DSP Preset	DSP Preset
Power Amp (RMS)	800W	800W
Power Amp max (Peak)	1600W	1600W
Enclosure Finish	ABS	ABS
Power Supply	AC220-240V, 50Hz	AC220-240V, 50Hz
Weight	20,5 Kg	24 Kg
Dimensions	370x375x615mm	435x410x710mm
Solutions	Rental Leisure Hospitality Sport & Wellness	Rental Leisure Hospitality Sport & Wellness

EAGLE SERIES

ACTIVE SPEAKERS

SOUND/PA
SPEAKERS

UNLEASH THE BEAST

Elevate your audio experience with the Eagle Series, a formidable lineup of active PA speakers designed to deliver unparalleled sound quality and performance. Boasting robust 12 and 15-inch drivers, these speakers are engineered to captivate audiences with their dynamic range and crystal-clear audio reproduction. Power and Precision Unleashed!



EAGLE SERIES

ACTIVE SPEAKERS

SOUND/PA
SPEAKERS



EAGLE SERIES

ACTIVE SPEAKERS

SOUND/PA
SPEAKERS



Eagle 12

2 WAYS ACTIVE
SPEAKER



Eagle 15

2 WAYS ACTIVE
SPEAKER

EAGLE SERIES

ACTIVE SPEAKERS

SOUND/PA SPEAKERS

MODEL	EAGLE 12	EAGLE 15
Type	Active 2 Ways	Active 2 Ways
Woofer Driver	12"	15"
Woofer voice coil	3"	3"
HF Driver type	Horn	Horn
HF Driver	1,35"	1,35"
Frequency Response	30Hz-20KHz	20Hz-20KHz
Maximum SPL (dB)	125dB	125dB
Sensitivity (1w/1m)	112dB	114dB
Impedance Type	8 ohms	8 ohms
Mount	Stand	Stand
Mount Type	Flange 36mm Up pole	Flange 36mm Up pole
Mic/Line Inputs	2	2
Mic/Line inputs connector	XLR/Jack Combi	XLR/Jack Combi
AUX inputs	Mini Jack 3,5 Stereo	Mini Jack 3,5 Stereo
Line outputs	1	1
Line outputs connector	XLR	XLR
DSP Processor	DSP Preset	DSP Preset
Bluetooth	BLuetooth+TWS	BLuetooth+TWS
Load Power (RMS)	600W	600W
Load Power Peak	1000W	1000W
Power Amp (RMS)	450W	450W
Power Amp max (Peak)	900W	900W
Enclosure Finish	ABS	ABS
Power Supply	AC110V-240V	AC110V-240V
Weight	19Kg	22Kg
Dimensions	480mm x 420mm x 680mm	503mm x 441mm x 777mm
Solutions	Rental Leisure Hospitality Sport & Wellness	Rental Leisure Hospitality Sport & Wellness

HURLEY SERIES

ACTIVE SPEAKERS

SOUND/PA
SPEAKERS

SHINE BRIGHT LIKE A HURLEY

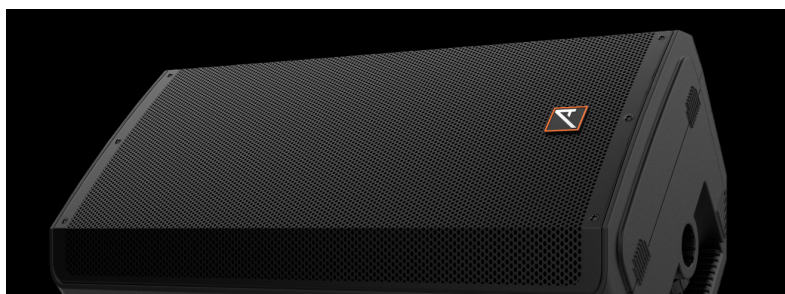
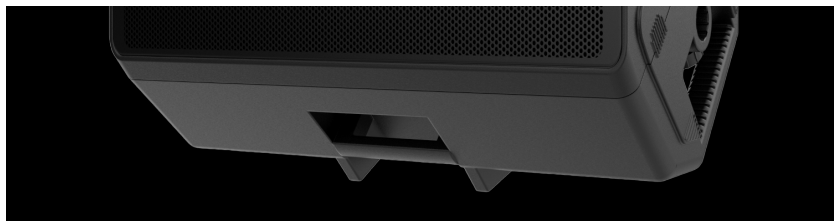
Immerse yourself in a world of unparalleled audio with the Hurley Series, a collection of active PA speakers meticulously crafted to redefine your sonic experience. With powerful 12 and 15-inch drivers at their core, these speakers are engineered to deliver a harmonious blend of clarity, depth, and raw energy.



HURLEY SERIES

ACTIVE SPEAKERS

SOUND/PA
SPEAKERS



HURLEY SERIES

ACTIVE SPEAKERS

SOUND/PA
SPEAKERS



Hurley 12

2 WAYS ACTIVE
SPEAKER



Hurley 15

2 WAYS ACTIVE
SPEAKER

HURLEY SERIES

SPECIFICATIONS

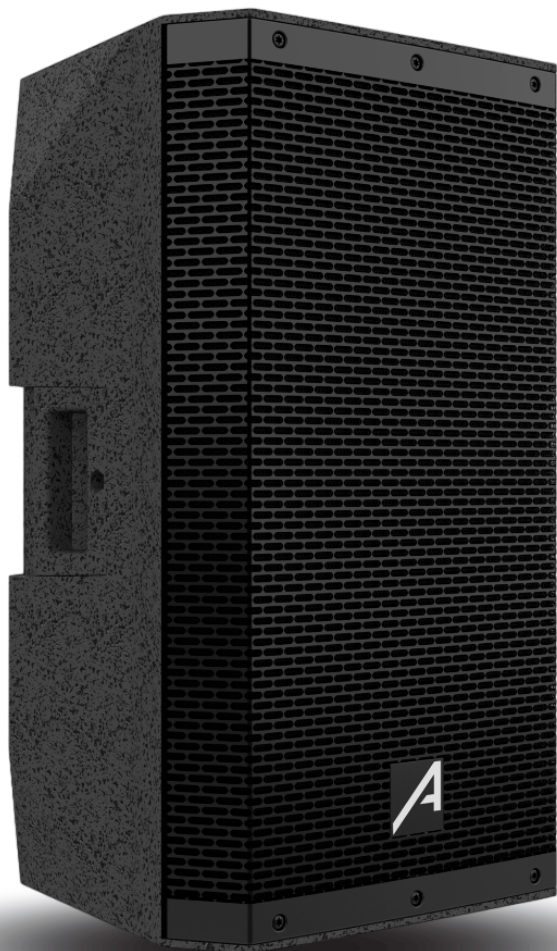
SOUND/PA SPEAKERS

MODEL	HURLEY 12	HURLEY 15
Type	Active 2 Ways	Active 2 Ways
Woofers Driver	12"	15"
Woofers Voice Coil	2.5"	2.5"
HF Driver type	Horn	Horn
HF Driver	1,35"	1,35"
Frequency Response	52Hz-20KHz	38Hz-20KHz
Maximum SPL (dB)	121dB	123dB
Sensitivity (1w/1m)	108dB	110dB
Impedance Type	8 ohms	8 ohms
Mount	Stand	Stand
Mount Type	Flange 36mm	Flange 36mm
Mic/Line Inputs	5+	5+
Mic/Line inputs connector	XLR/Jack/RCA/mini-Jack/Link	XLR/Jack/RCA/mini-Jack/Link
AUX inputs	Mini Jack + RCA	Mini Jack + RCA
Line outputs	Link+Out Stereo config	Link+Out Stereo config
Line outputs connector	XLR	XLR
DSP Processor	DSP Preset	DSP Preset
Bluetooth	BLuetooth+TWS	BLuetooth+TWS
USB/Radio/Player	USB/MSD/SD	USB/MSD/SD
Load Power (RMS)	400W	400W
Load Power Peak	600W	600W
Power Amp (RMS)	300W	300W
Power Amp max (Peak)	600W	600W
Enclosure Finish	ABS	ABS
Power Supply	AC110V-240V	AC110V-240V
Weight	16,8Kg	19Kg
Dimensions	430mm x 370mm x 720mm	480mm x 420mm x 780mm
Solutions	Rental, Leisure, Hospitality, Sport & Wellness	Rental, Leisure, Hospitality, Sport & Wellness

PRO SERIES

PASSIVE SPEAKERS

SOUND/PA SPEAKERS



PROFESSIONAL PROGRESS PROUD PRO SERIES

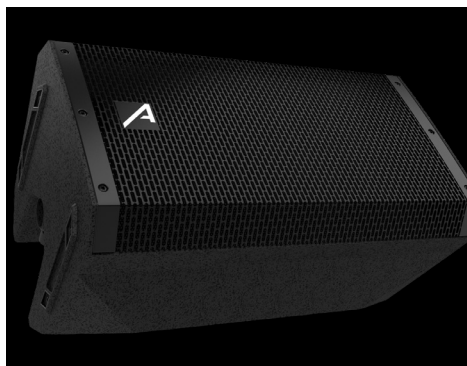
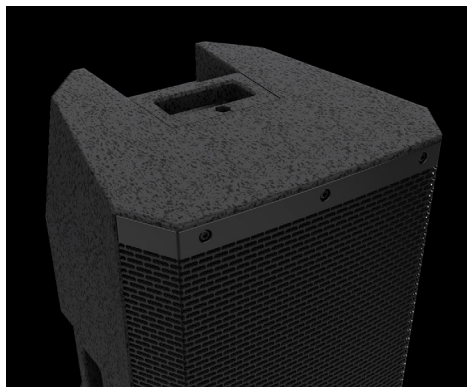
Introducing the Pro Series Passive Speakers: Where ProFessionalism, ProGress, and ProUd Sound Unite!

Unleash the power of professional - grade audio with the Pro Series Passive Speakers. Available in 8, 10, 12, and 15-inches, these speakers embody a commitment to ProFessional sound quality, continuous ProGress in technology, and a ProUd legacy of delivering exceptional audio experiences.

PRO SERIES

PASSIVE SPEAKERS

SOUND/PA SPEAKERS



PRO SERIES

PASSIVE SPEAKERS

SOUND/PA
SPEAKERS



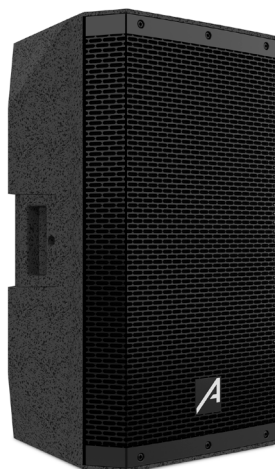
PRO8P

2 WAYS PASSIVE
SPEAKER



PRO10P

2 WAYS PASSIVE
SPEAKER



PRO12P

2 WAYS PASSIVE
SPEAKER



PRO15P

2 WAYS PASSIVE
SPEAKER

PRO SERIES

SPECIFICATIONS

SOUND/PA SPEAKERS

MODEL	PRO8P	PRO10P	PRO12P	PRO15P
Type	Passive 2 Ways	Passive 2 Ways	Passive 2 Ways	Passive 2 Ways
Woofers Driver	8"	10"	12"	15"
Woofers voice coil	2"	VC2" 40 OZ	VC3" 60 OZ	VC3" 60 OZ
HF Driver type	Horn	Horn	Horn	Horn
HF Driver Dimensions	1" titanium	1" titanium	1" titanium	1" titanium
HF driver voice coil	VC1.0" (25,5mm)	VC1.0" (25,5mm)	VC1.35" (35,5mm)	VC1.75" (44,5mm)
Frequency Response	58Hz-20KHz	55Hz-20KHz	48Hz-20KHz	45Hz-20kHz
Maximum SPL (dB)	119dB	120dB	124dB	126dB
Sensitivity (1w/1m)	93dB	95dB	96dB	97dB
Impedance Type	8 ohms	8 ohms	8 ohms	8 ohms
Dispersion	90° x 60°	90° x 60°	90° x 60°	90° x 60°
Mount	Stand	Stand	Stand	Stand
Mount Type	Flange 36mm & Flying points	Flange 36mm & Flying points	Flange 36mm & Flying points	Flange 36mm & Flying points
Amp inputs connector	Speakon 4-p	Speakon 4-p	Speakon 4-p	Speakon 4-p
Line outputs	2	2	2	2
Load Power (RMS)	150W	180W	300W	400W
Load Power Peak	500W	500W	1000W	1500W
Enclosure Finish	ABS Anti - Scratch	ABS Anti - Scratch	ABS Anti - Scratch	ABS Anti - Scratch
Weight	7Kg	9Kg	16Kg	20Kg
Dimensions	310mmX300mmX480mm	350mmX330mmX560mm	420mmX410mmX680mm	480mmX450mmX760mm
Solutions	Rental Leisure Hospitality Sport & Wellness	Rental Leisure Hospitality Sport & Wellness	Rental Leisure Hospitality Sport & Wellness	Rental Leisure Hospitality Sport & Wellness

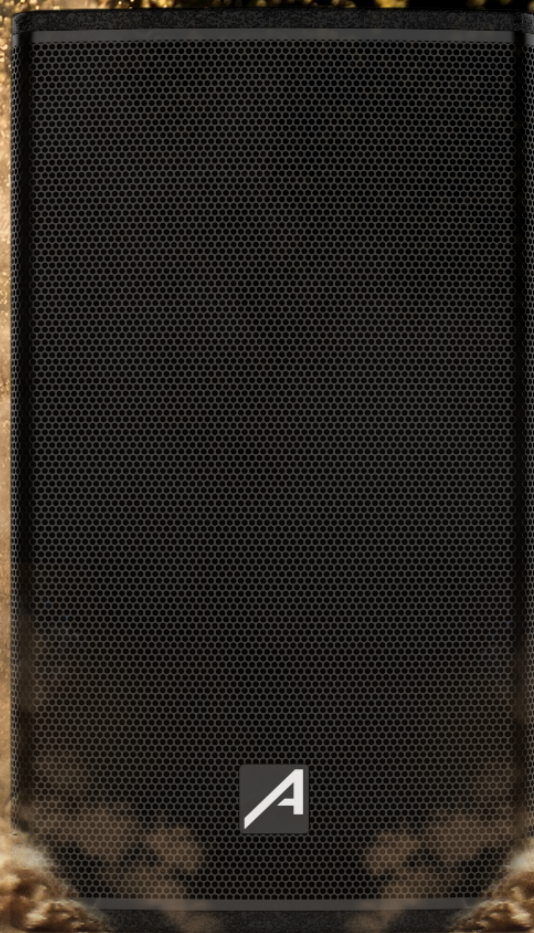
COLUMBIA SERIES

PASSIVE SPEAKERS

SOUND/PA
SPEAKERS

PUSHING LIMITS, DEFINING POWER

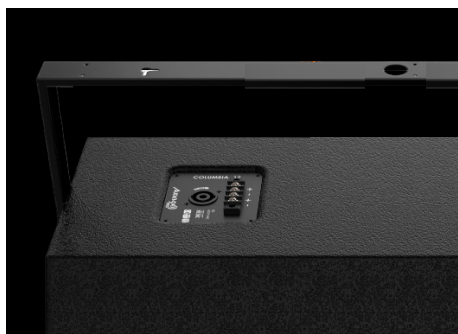
Columbia Series seamlessly blends aesthetic elegance with sophisticated engineering, creating a harmonious fusion of sight and sound. Instead of merely serving as a visual attraction, the unique design is purposefully crafted to support and enhance the functionality and audio performance of the system. It's truly a perfect union of both sonic excellence and stylish design.



COLUMBIA SERIES

PASSIVE SPEAKERS

SOUND/PA
SPEAKERS



COLUMBIA SERIES

PASSIVE SPEAKERS

SOUND/PA
SPEAKERS



Columbia 8
2 WAYS PASSIVE
SPEAKERS



Columbia 10
2 WAYS PASSIVE
SPEAKERS



Columbia 12
2 WAYS PASSIVE
SPEAKERS



Columbia 15
2 WAYS PASSIVE
SPEAKERS

COLUMBIA SERIES

SPECIFICATIONS

SOUND/PA SPEAKERS

MODEL	COLUMBIA 8	COLUMBIA 10	COLUMBIA 12	COLUMBIA 15
Type	Passive 2 Ways	Passive 2 Ways	Passive 2 Ways	Passive 2 Ways
Woofers Driver	8"	10"	12"	15"
Woofers voice coil	2"	2"	2,5"	3"
HF Driver type	Horn	Horn	Horn	Horn
HF Driver Dimensions	1.35"	1.35"	1.35"	1.75"
HF driver voice coil	3,5"	3,5"	3,5"	4,5"
Frequency Response	60Hz-20KHz	60Hz-20KHz	55Hz-20KHz	50Hz-20KHz
Maximum SPL (dB)	125dB	127dB	129dB	131dB
Sensitivity (1w/1m)	94dB	94dB	94dB	95dB
Impedance Type	8 ohms	8 ohms	8 ohms	8 ohms
Dispersion	90°H x 80°V	90°H x 80°V	90°H x 80°V	90°H x 80°V
Mount	Wall	Wall	Wall	Wall
Mount Type	Flying & Brackets	Flying & Brackets	Flying & Brackets	Flying & Brackets
Load power (RMS)	250W	300W	400W	500W
Load Power Peak	500W	600W	800W	1000W
Enclosure Finish	Multilayer Plywood	Multilayer Plywood	Multilayer Plywood	Multilayer Plywood
Weight	8Kg	10Kg	15Kg	20Kg
Dimensions	245x245x435mm	290x290x495mm	360x360x610mm	420x420x690mm
Solutions	Rental Leisure Hospitality Sport & Wellness	Rental Leisure Hospitality Sport & Wellness	Rental Leisure Hospitality Sport & Wellness	Rental Leisure Hospitality Sport & Wellness

PA SYSTEMS

Unleash the power of professional audio with our PA system solutions. From crisp highs to thunderous lows, our cutting-edge technology delivers unparalleled sound quality. Elevate your events, performances, and presentations with the perfect blend of clarity and impact. Step into the future of audio excellence with our state-of-the-art PA systems.



ROMA SERIES

PA SYSTEMS

SOUND/PA
SYSTEMS

ROMA-NCE EXPERIENCE

Introducing the Roma Series Active PA Speakers: Unleash Portable Power and Precise Sound!

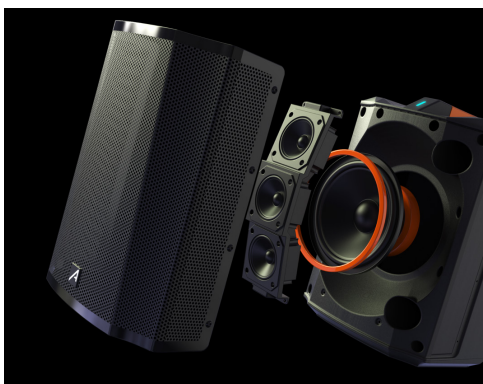
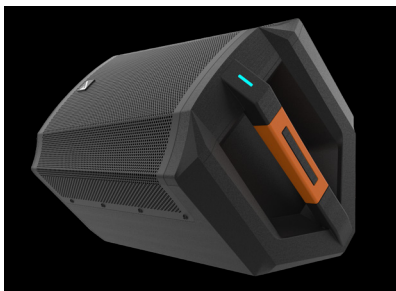
Experience the perfect blend of portability and exceptional audio quality with the Roma Series Active PA Speakers. These 2-way speakers, equipped with a 6.5-inch driver, seamlessly combine cutting-edge technology with the convenience of a built-in battery, ensuring that your sound goes wherever your creativity takes you.



ROMA SERIES

PA SYSTEMS

SOUND/PA
SYSTEMS



ROMA SERIES

PA SYSTEMS

SOUND/PA
SYSTEMS



Roma 80 Go

PORTABLE PA
SYSTEM WITH
BATTERY



Roma 120 Go

PORTABLE PA
SYSTEM WITH
BATTERY



Roma 240 Go

PORTABLE PA
SYSTEM WITH
BATTERY

ROMA SERIES

SPECIFICATIONS

SOUND/PA SYSTEMS

MODEL	ROMA 80 GO	ROMA 120 GO	ROMA 240 GO
Type	Active 2 Ways	Active 2 Ways	Active 2 Ways
Woofer Driver	6,5"	6,5"	6,5"
Woofer voice coil	1,4"	1"	1,5"
HF Driver type	Array Drivers	Tweeter	Array Drivers
HF Driver Dimensions	3x3"	1" dome tweeter	3x2,75"
HF driver voice coil	N/A	0,8"	3x1"
Frequency Response	50Hz-18KHz	60Hz-18KHz	60Hz-18KHz
Maximum SPL (dB)	102dB	105dB	113dB
Sensitivity (1w/1m)	96dB	N/A	N/A
Impedance Type	4 ohms	4 ohms	4 ohms
Dispersion	N/A	V90° x H90°	V90° x H120°
Mount	Stand	Stand	Stand
Mount Type	Flange 36mm & Monitor Down	Bracket	Flange 36mm & Monitor Down
Mic/Line Inputs	2	2	3
Mic/Line inputs connector	XLR/Jack Combi	XLR	XLR/Jack Combi
AUX inputs	Mini Jack 3,5 Stereo	N/A	RLA Stereo
Line outputs	1	1	1
Line outputs connector	Jack 6,3mm	XLR	XLR
DSP Processor	N/A	N/A	DSP Preset
Bluetooth	Bluetooth+TWS	Bluetooth+TWS	Bluetooth+TWS
USB/Radio/Player	USB Type A	USB/MSD/SD	N/A
Load Power (RMS)	100W	N/A	N/A
Load Power Peak	280W	N/A	N/A
Power Amp (RMS)	40W	60W	120W

ROMA SERIES

SPECIFICATIONS

SOUND/PA SYSTEMS

MODEL	ROMA 80 GO	ROMA 120 GO	ROMA 240 GO
Power Amp Max (Peak)	80W	120W	240W
Enclosure Finish	ABS	ABS	ABS
Power Supply	AC 100V/240V	AC 100V/240V	AC 100V/240V
Weight	9Kg	6,78Kg	8,5Kg
Battery Power	Lithium	Lithium	Lithium
Battery Operation Time	12H	12H	12H
Dimensions	285mmX255mmX356mm	285mmX250mmX345mm	285mmX250mmX345mm
Solutions	Hospitality Leisure Rental Education	Hospitality Leisure Rental Education	Hospitality Leisure Rental Education



SEATTLE SERIES

PA SYSTEMS

SOUND/PA
SYSTEMS

POWER **IN** EVERY PULSE

Immerse yourself in a revolutionary audio experience with the Seattle Series. Designed with cutting-edge array drivers, these systems deliver a new dimension of sound precision and clarity, ensuring your audience experiences music, speeches, and performances like never before.



SEATTLE SERIES

PA SYSTEMS

SOUND/PA
SYSTEMS



SEATTLE SERIES

PA SYSTEMS

SOUND/PA
SYSTEMS



Seattle 500
ACTIVE ARRAY

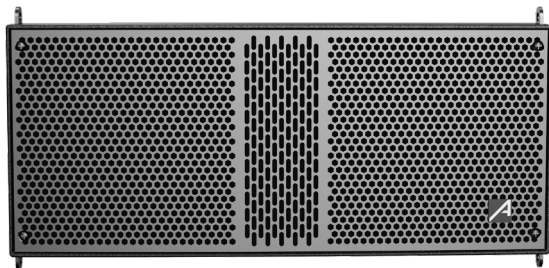
Seattle 1000
ACTIVE ARRAY



SEATTLE SERIES

PA SYSTEMS

SOUND/PA
SYSTEMS

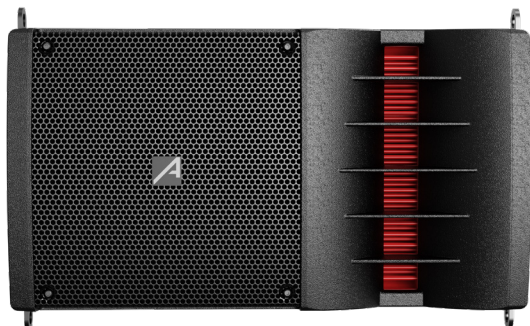


Seattle 261LA

ACTIVE ARRAY

Seattle 18S 2.1

ACTIVE SUBWOOFER



Seattle 6L

PASSIVE 2 WAYS SPEAKER

SEATTLE SERIES

SPECIFICATIONS

SOUND/PA SYSTEMS

MODEL	SEATTLE 500	SEATTLE 1000	SEATTLE 18S 2.1	SEATTLE 261LA	SEATTLE 6L
Type	Active Array	Active Array	Active	Active Array	Passive 2 Ways
Woofer Driver	15"	18"	18"	2x6,5"	6,5"
Woofer voice coil	2"	3"	3"	2x1,5"	1"
HF Driver type	Horn	Horn	N/A	Horn	Horn
HF Driver Dimensions	MF4x4"+ HF4x1" piezo (x2)	MF4x6,5"+HF4x	N/A	1,5"	1"
Frequency Response	45Hz-20KHz	45Hz-20KHz	45Hz-200Hz	80Hz-20KHz	65Hz-20KHz
Maximum SPL (dB)	120dB	125dB	124dB	124dB	118dB
Impedance Type	4 ohms	4 ohms	4 ohms	4 ohms	8 ohms
Dispersion	V90°XH110°	V 90°X H 120°	N/A	V 15°X H 120°	V 90°X H 120°
Mount	Stand	Stand	Stand	Stand	Stand
Mount Type	Flange 36mm Up pole	Flange 36mm & Flying points	Flange 36mm Up pole	Flange 36mm & Flying points	Flange 36mm & Flying points
Mic/Line Inputs	2	2	2	1	N/A
Mic/Line inputs connector	XLR	XLR/Jack Combi	XLR/Jack Combi	XLR	N/A
AUX inputs	Mini jack + RCA	RCA Stereo	RCA Stereo	N/A	N/A
Amp inputs	N/A	N/A	N/A	N/A	1+1 Parallel
Amp inputs connector	Jack 6,3mm	Speakon 2-p	Speakon 2-p	N/A	Jack 6,3mm
Line outputs	2	2	2	1	2
Line outputs connector	XLR	XLR	XLR	XLR	JACK 6,3mm
DSP Processor	DSP Preset	DSP Preset	DSP Preset	DSP Preset	N/A
Bluetooth	Bluetooth	Bluetooth	Bluetooth	N/A	N/A
USB/Radio/Player	USB/MSD/SD	N/A	USB/MSD/SD	N/A	N/A

SEATTLE SERIES

SPECIFICATIONS

SOUND/PA SYSTEMS

MODEL	SEATTLE 500	SEATTLE 1000	SEATTLE 18S 2.1	SEATTLE 261LA	SEATTLE 6L
Load power (RMS)	HF100W+HF100W	HF300W+HF300W	HF300W+HF300W	N/A	200W
Load Power Peak	N/A	N/A	N/A	N/A	400W
Power Amp (RMS)	LF500W+HF100W+H-F100W	LF500W+HF300W+H-F300W	LF500W+HF300W+H-F300W	N/A	N/A
Power Amp max (Peak)	1000W	2000W	2000W	1000W	N/A
Enclosure Finish	ABS+MDF	ABS+MDF	MDF	ABS	ABS
Power Supply	AC 100V/240V	AC 100V/240V	AC 100V/240V	AC 100V/240V	N/A
Weight	Sat : 21.55kg ; Sub: 22.9kg	Sat : 33.93kg ; Sub: 38.57kg	38.57kg	15.25kg	8.5kg
Dimensions	N/A	515x610x620mm	515x610x620mm	460x320x200mm	360x220x220mm
Solutions	Sport & Wellness Leisure Rental Education	Sport & Wellness Leisure Rental Education	Sport & Wellness Leisure Rental Education	Sport & Wellness Leisure Rental Education	Sport & Wellness Leisure Rental Education



DETROIT SERIES

PA SYSTEMS

SOUND/PA
SYSTEMS

CONNECTING PEOPLE

Dive into the heart of sonic excellence with the DETROIT Series PA Systems, meticulously designed to amplify your audio experience with cutting-edge array drivers. From the foundational 200W model to the powerhouse 1000W variant, the DETROIT Series delivers versatility, clarity, and sheer power for a range of applications.

DETROIT SERIES

PA SYSTEMS

SOUND/PA
SYSTEMS



DETROIT SERIES

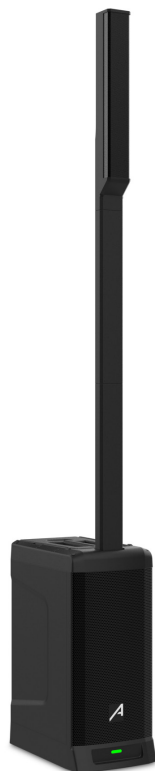
PA SYSTEMS

SOUND/PA
SYSTEMS



Detroit 200 Go BT

PA COLUMN
WITH BATTERY



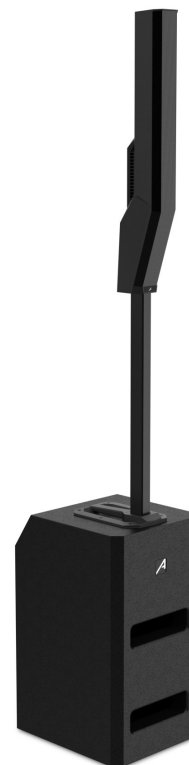
Detroit 400 BT

PA COLUMN



Detroit 1000 DSP

ACTIVE FULL RANGE
COLUMN SPEAKER



Detroit 1000X DSP

ARRAY COLUMN

DETROIT SERIES

SPECIFICATIONS

SOUND/PA SYSTEMS

MODEL	DETROIT 200 GO BT	DETROIT 400 BT	DETROIT 1000 DSP	DETROIT 1000X DSP
Type	Active Array	Active Array	Active Array	Active Array
Woofer Driver	8"	8"	10"	12"
Woofer voice coil	1,2"	2"	1,5"	2,5"
HF Driver type	Array Drivers	Array Drivers	Array Drivers	Array Drivers
HF Driver Dimensions	4x2,5"	6x2"	4x2,75"	8x3"
HF driver voice coil	N/A	N/A	1"	0,78"
Frequency Response	40Hz-20KHz	30Hz-20KHz	47Hz-21KHz	45Hz-20Hz
Maximum SPL (dB)	110dB	N/A	117dB	125dB
Sensitivity (1w/1m)	102dB	108dB	N/A	N/A
Impedance Type	4 ohms	4 ohms	4 ohms	4 ohms
Dispersion	N/A	N/A	V 90°X H 240°	V 90°X H 120°
Mount	Stand	Stand	Stand	Stand
Mount Type	N/A	N/A	Flange 36mm & Up pole	N/A
Mic/Line Inputs	2	3	2	4
Mic/Line inputs connector	XLR	XLR/Jack Combi	XLR	XLR/Jack Combi
AUX inputs	Mini jack + RCA	Mini jack + RCA	N/A	Mini jack + RCA
Amp inputs	N/A	N/A	1	N/A
Amp inputs connector	N/A	N/A	Speakon 2-p	N/A
Line outputs	1	1	1	1
Line outputs connector	XLR	XLR	XLR	XLR
DSP Processor	N/A	DSP Preset	DSP Preset	DSP Preset
Bluetooth	Bluetooth+TWS	Bluetooth+TWS	Bluetooth+TWS	Bluetooth+TWS
USB/Radio/Player	USB/MSD/SD	USB/MSD/SD	N/A	N/A

DETROIT SERIES

SPECIFICATIONS

SOUND/PA SYSTEMS

MODEL	DETROIT 200 GO BT	DETROIT 400 BT	DETROIT 1000 DSP	DETROIT 1000X DSP
Load Power (RMS)	150W	500W	N/A	N/A
Load Power Peak	300W	400W	N/A	N/A
Power Amp (RMS)	100W	200W	LH400W+HF60W	LF400W HF200W
Power Amp Max (Peak)	200W	400W	1000W	1000W
Enclosure Finish	ABS	ABS	ABS+MDF	ABS+MDF
Power Supply	AC 100V/240V	AC 100V/240V	AC 100V/240V	AC 100V/240V
Weight	7Kg	9Kg	20,3Kg	28,5Kg
Battery Power	Lithium	N/A	N/A	N/A
Dimensions	320mmX310mmX1850mm	N/A	315mmX495mmX1800mm	360mmX430mmX720mm
Solutions	Sport & Wellness Leisure Rental Education	Sport & Wellness Leisure Rental Education	Sport & Wellness Leisure Rental Education	Sport & Wellness Leisure Rental Education



INSTALLATION SPEAKERS

Experience unparalleled audio excellence with our premium installation speakers. Elevate your sound environment to new heights with crystal-clear clarity and immersive acoustics. Discover the art of superior sound – where innovation meets installation.

BROOKLYN SERIES

WALL MOUNT SPEAKERS

INSTALLATION
SPEAKERS

BROOKLYN SOUND FOR ALL AROUND

Immerse your surroundings in a symphony of superior audio with our state-of-the-art Brooklyn Series Passive Wall-Mount Speakers. Available in 4, 5, 6.5, and 8-inch variants, and offered in both classic black and pristine...

... white finishes, these speakers are the epitome of versatility and elegance, making them the ideal choice for installations in retail spaces, educational institutions, and sport and wellness centers.



BROOKLYN SERIES

WALL MOUNT SPEAKERS

INSTALLATION
SPEAKERS



BROOKLYN SERIES

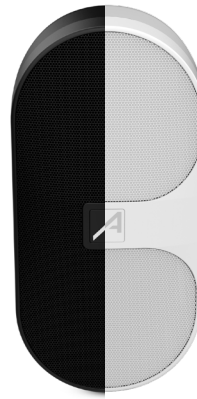
WALL MOUNT SPEAKERS

INSTALLATION
SPEAKERS



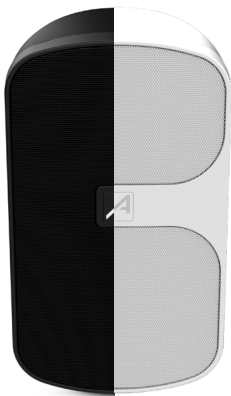
Brooklyn 4T

*SUPPLIED
IN PAIRS



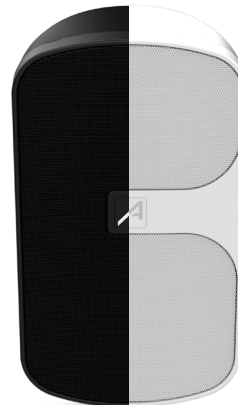
Brooklyn 5T

*SUPPLIED
IN PAIRS



Brooklyn 6T

*SUPPLIED
IN PAIRS



Brooklyn 8T

*SUPPLIED
IN PAIRS

BROOKLYN SERIES

SPECIFICATIONS

INSTALLATION SPEAKERS

MODEL	BROOKLYN 4T	BROOKLYN 5T	BROOKLYN 6T	BROOKLYN 8T
Type	Passive 2 Ways	Passive 2 Ways	Passive 2 Ways	Passive 2 Ways
Woofer Driver	4"	5"	6,5"	8"
Woofer voice coil	1"	1"	1"	1"
HF Driver type	Tweeter	Tweeter	Tweeter	Tweeter
HF Driver	1.5" Silk soft dome	1.5" Silk soft dome	1.5" Silk soft dome	1.5" Silk soft dome
HF Driver voice coil	1"	1"	1"	1"
Frequency Response	90Hz-20KHz	80Hz-20KHz	75Hz-20KHz	65Hz-20KHz
Maximum SPL (dB)	113	115	118	120
Sensitivity (1w/1m)	85dB	86dB	87dB	88dB
Impedance Type	100V/70V	100V/70V	100V/70V	100V/70V
Dispersion	90°H x 70°V	90°H x 70°V	100°H x 60°V	100°H x 60°V
Mount	Wall	Wall	Wall	Wall
Amp inputs connector	EuroBlock+ Screw	EuroBlock+ Screw	EuroBlock+ Screw	EuroBlock+ Screw
Load power (RMS)	3W/6W/15W/30W	3W/6W/15W/30W	5W/10W/20W/40W	5W/10W/20W/40W
Enclosure Finish	ABS	ABS	ABS	ABS
Weight	2,8 Kg	3,2 Kg	5 Kg	5,5 Kg
Dimensions	145x247x295mm	170x282x365mm	196x300x330mm	240x335x390mm
Solutions	Retail Education Sport &Wellness Leisure	Retail Education Sport &Wellness Leisure	Retail Education Sport &Wellness Leisure	Retail Education Sport &Wellness Leisure

JAVA SERIES

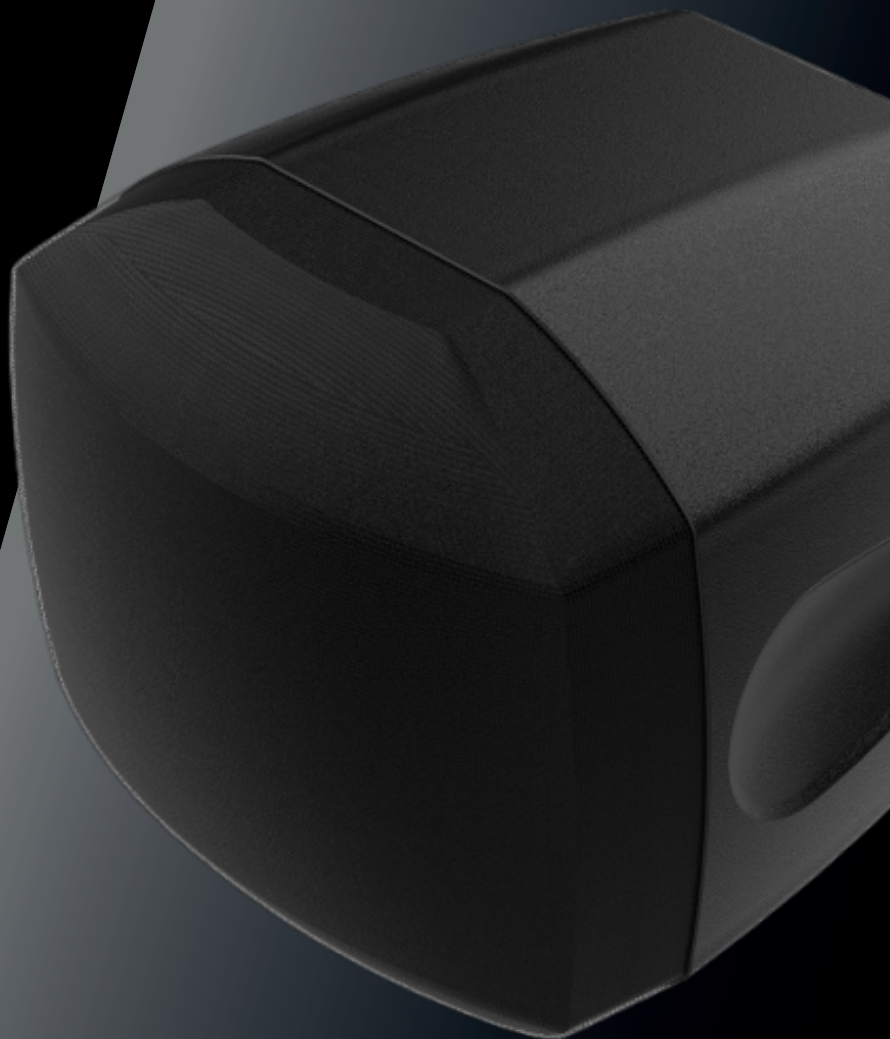
WALL MOUNT SPEAKERS

INSTALLATION
SPEAKERS

SMALL BUT LOUD

Introducing the Java Series, a line of passive wall-mounted speakers designed to elevate your audio experience. Available in 2.5 and 4 inches, these speakers offer a perfect blend of compact design and powerful sound, catering to diverse settings. Choose between the classic elegance of white or the sleek sophistication of black to seamlessly integrate with any environment.

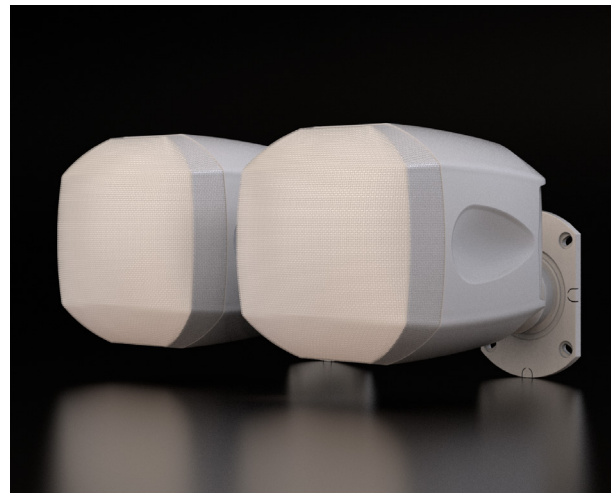
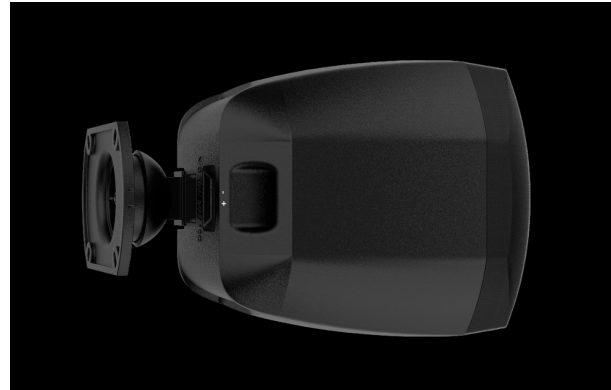
Crafted from durable ABS material, the Java Series speakers are built to withstand the test of time, ensuring longevity and consistent performance. The small footprint of these speakers makes them ideal for a variety of spaces, from retail establishments to sport and wellness centers, and even for home use.



JAVA SERIES

WALL MOUNT SPEAKERS

INSTALLATION SPEAKERS



JAVA SERIES

WALL MOUNT SPEAKERS

INSTALLATION SPEAKERS



Java 2 TB Black

*SUPPLIED
IN PAIRS



Java 2 TB White

*SUPPLIED
IN PAIRS



Java 4 TW Black

*SUPPLIED
IN PAIRS



Java 4 TW White

*SUPPLIED
IN PAIRS

JAVA SERIES

SPECIFICATIONS

INSTALLATION SPEAKERS

MODEL	JAVA 2 T	JAVA 4 T
Type	Passive	Passive
Woofers Driver	2,75"	4"
Frequency Response	100Hz-20KHz	120Hz-20KHz
Maximum SPL	N/A	99dB
Sensitivity (1w/1m)	89dB	85dB
Impedance Type	100V/70V	100V/70V/Low-z
Mount	Wall	Wall
Mount Type	Bracket	Bracket
Amp inputs	1+1 Parallel	1+1 Parallel
Amp inputs connector	Euroblock + Screw	Euroblock + Screw
Load Power (RMS)	100V/1,25W/2,5W/5W/10W	z20W 100V/1,25W/2,25W/5W/10W
Enclosure Finish	ABS	ABS
Weight	0,63Kg	1,23Kg
Dimensions	94mm x 83mm x 118mm	148mm x 27mm x 138mm
Solutions	Retail Hospitality Sport &Wellness Leisure	Retail Hospitality Sport &Wellness Leisure

PR SERIES

WALL MOUNT SPEAKERS

INSTALLATION
SPEAKERS

WHEN SOUND MATTERS

Introducing the PR Series Bluetooth Wall-Mount Speakers—Your Gateway to Premium Audio Excellence! Unleash the power of immersive audio with our PR Series Bluetooth Wall-Mount Speakers, available in both 5.25 and 6.5-inch variants, and presented in...

...classic black and white finishes. Specially crafted for seamless installation, these speakers redefine the audio landscape in any space, delivering a harmonious blend of superior sound quality and modern convenience.



PR SERIES

WALL MOUNT SPEAKERS

INSTALLATION SPEAKERS



PR SERIES

WALL MOUNT SPEAKERS

INSTALLATION
SPEAKERS



PR-52 BT



PR-62 BT

PR SERIES

SPECIFICATIONS

INSTALLATION SPEAKERS

MODEL	PR-52 BT	PR-62 BT
Type	Active	Active
Woofers Driver	5,25"	6,5"
HF Driver type	Tweeter	N/A
HF Driver Dimensions	0,75"	1"
Frequency Response	90Hz-20KHz	70Hz-20KHz
Sensitivity (1w/1m)	89dB	91dB
Impedance Type	8 ohms	8 ohms
Mount	Wall	Wall
Mount Type	Bracket	Bracket
Amp inputs	Master Wired	Master Wired
Bluetooth	Bluetooth	Bluetooth
Load power (RMS)	30W+30W	40W+40W
Load Power Peak	60W+60W	80W+80W
Enclosure Finish	ABS	ABS
Power Supply	12V/2A Adapter	12V/2A Adapter
Weight	6 Kg	7,5 Kg
Dimensions	248mm x 183mm x 164mm	300mm x 215mm x 189mm
Solutions	Retail Hospitality Sport & Wellness Leisure	Retail Hospitality Sport & Wellness Leisure

TUCSON SERIES

WALL MOUNT SPEAKERS

INSTALLATION SPEAKERS

FIND THE RHYTHM

Tucson Series: a range of passive column installation speakers designed to elevate your outdoor audio experience. Crafted for wall mounting, these speakers are meticulously engineered for both durability and exceptional sound quality, making them the ideal choice for enhancing outdoor spaces.

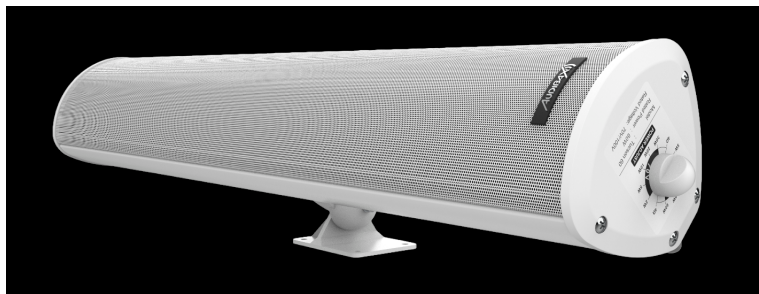
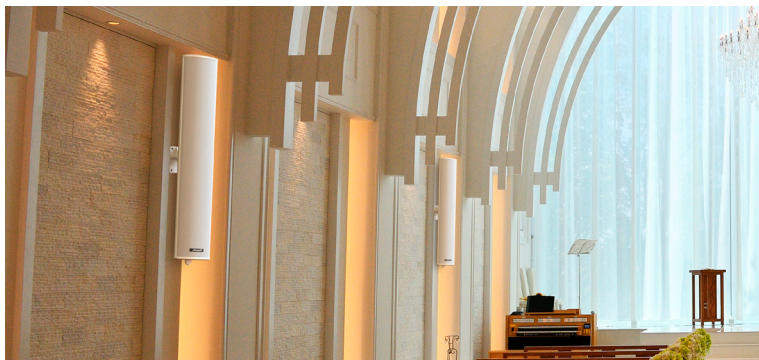
Constructed with robust aluminum, the Tucson Series speakers are built to withstand the elements, ensuring longevity and resistance to outdoor conditions. Available in power options of 100W and 200W, these speakers provide a versatile solution for various outdoor environments, delivering clear and powerful audio.



TUCSON SERIES

WALL MOUNT SPEAKERS

INSTALLATION SPEAKERS



TUCSON SERIES

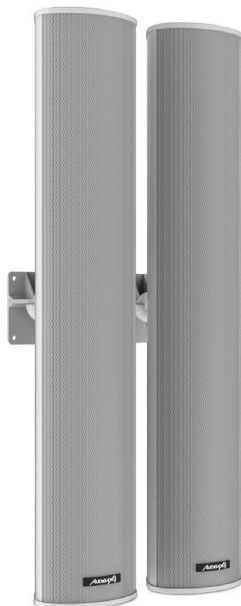
WALL MOUNT SPEAKERS

INSTALLATION
SPEAKERS



Tucson 60 Black

PASSIVE 2-WAY
OUTDOOR
COLUMN SPEAKERS



Tucson 60 White

PASSIVE 2-WAY
OUTDOOR
COLUMN SPEAKERS



Tucson 100

2 WAYS COLUMN
PASSIVE SPEAKERS



Tucson 200

2 WAYS COLUMN
PASSIVE SPEAKERS

TUCSON SERIES

SPECIFICATIONS

INSTALLATION SPEAKERS

MODEL	TUCSON 60	TUCSON 100	TUCSON 200
Type	Passive 2 Ways	Passive 2 Ways	Passive 2 Ways
Woofer Driver	4x3"	2x4"	4x4"
Woofer Voice Coil	N/A	25.5mm	25.5mm
HF Driver type	Tweeter	Tweeter	Driver
HF Driver	2"	2X1"	1"
Frequency Response	140Hz-20KHz	65Hz-20KHz	65Hz-20KHz
Maximum SPL (dB)	109	94±3dB	96±3dB
Sensitivity (1w/1m)	92dB	90dB	93dB
Impedance Type	100V/70V/Low-z	4 ohms	8 ohms
Mount	Wall	Wall	Wall
Mount Type	Bracket	Bracket	Bracket
Amp inputs	N/A	1+1 Parallel	1+1 Parallel
Amp inputs connector	N/A	Speakon 1+1 & Screw	Speakon 1+1 & Screw
Load power (RMS)	60Wz-100V/40W/20W/10W/5W	100W	200W
Load Power Peak	N/A	200W	400W
Enclosure Finish	Aluminium IP65 UV-Protec	Aluminium IP65	Aluminium IP65
Weight	4Kg	6Kg	7,5Kg
Dimensions	609mm x 109mm x 102mm	160mm x 160mm x 500mm	160mm x 160mm x 780mm
Solutions	Retail Hospitality Sport & Wellness Leisure	Retail Hospitality Sport & Wellness Leisure	Retail Hospitality Sport & Wellness Leisure

BALI SERIES

OUTDOOR SPEAKERS

INSTALLATION
SPEAKERS

UNLEASH PROFESSIONAL SOUND WHATEVER THE WEATHER

Introducing the Bali Series Passive Wall-Mount Speakers – A perfect blend of sophistication and functionality! The Bali Series offers passive speakers designed for wall installation, providing a seamless audio solution for various settings. These speakers boast an IP65 rating, ensuring durability and resilience against environmental elements.

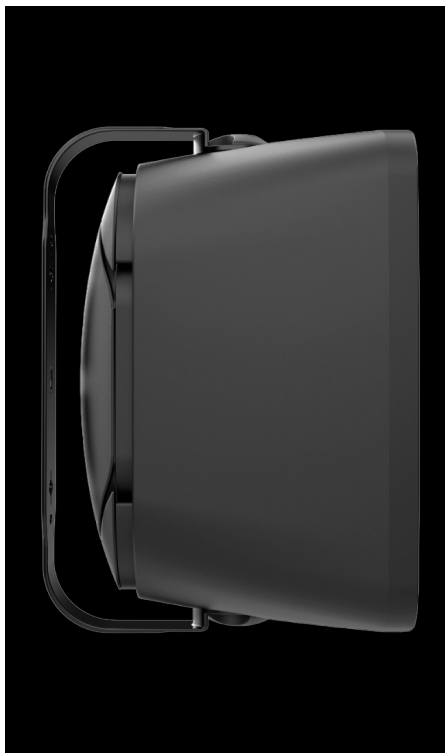
Available in three sizes – 5, 6, and 8 inches – the Bali Series caters to diverse audio needs. Choose from the classic options of pristine white or sleek black to seamlessly complement your interior aesthetics.



BALI SERIES

OUTDOOR SPEAKERS

INSTALLATION SPEAKERS



BALI SERIES

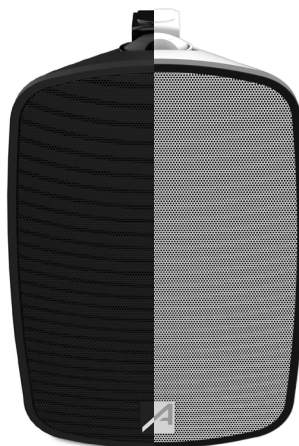
OUTDOOR SPEAKERS

INSTALLATION
SPEAKERS



Bali 5 T

*SUPPLIED
IN PAIRS



Bali 6 T

*SUPPLIED
IN PAIRS



Bali 8 T

*SUPPLIED
IN PAIRS

BALI SERIES

SPECIFICATIONS

INSTALLATION SPEAKERS

MODEL	BALI 5 T	BALI 6 T	BALI 8 T
Type	Passive 2 Ways	Passive 2 Ways	Passive 2 Ways
Woofer Driver	5"	6,5"	8"
HF Driver type	Tweeter	Tweeter	Tweeter
HF Driver	1" Silk soft dome	1" Silk soft dome	1" Silk soft dome
Frequency Response	57Hz-20KHz	57Hz-20KHz	57Hz-20KHz
Sensitivity (1w/1m)	85dB	89dB	90dB
Impedance Type	100V/70V/Low-z	100V/70V/Low-z	100V/70V/Low-z
Mount	Wall	Wall	Wall
Mount Type	Bracket	Bracket	Bracket
Amp inputs	1+1 Parallel	1+1 Parallel	1+1 Parallel
Amp inputs connector	Euroblock + Screw	Euroblock + Screw	Euroblock + Screw
Load Power (RMS)	z20W 100v/2,5W/5W/10W/20W	z40W 100V/5W/10W/20W/40W	z50W 100V/6,26W/12,5W/25W/50W
Enclosure Finish	ABS IP65	ABS IP65	ABS IP65
Weight	3,5Kg	3,45Kg	5,02Kg
Dimensions	258mm x 168mm x 163mm	285mm x 200mm x 195mm	381mm x 250mm x 250mm
Solutions	Retail Hospitality Sport & Wellness Leisure	Retail Hospitality Sport & Wellness Leisure	Retail Hospitality Sport & Wellness Leisure

GROUND SERIES

OUTDOOR SPEAKERS

INSTALLATION
SPEAKERS



BRINGING THE BEAT TO YOUR FEET

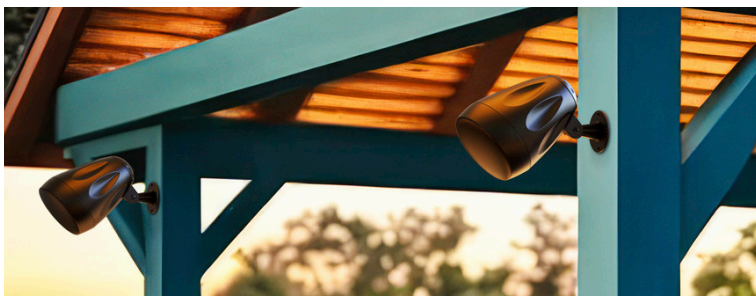
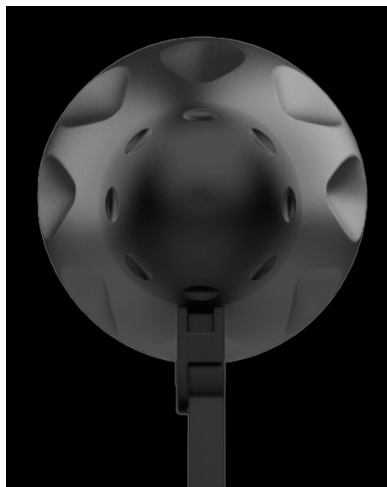
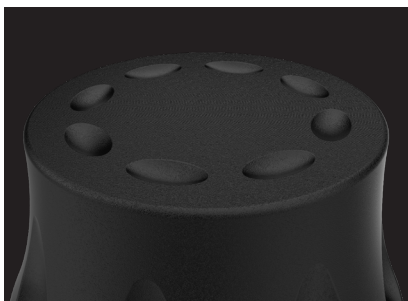
Introducing the Ground Series, a collection of passive speakers that redefine versatility and performance. Available in 4, 5.25, and 6.5 inches, these speakers offer a range of options to suit your audio needs. The Ground Series is designed for flexibility, allowing installation on the floor, seamlessly integrating into the landscape, on walls, or even suspended.

Versatility meets durability with the Ground Series, as these speakers boast an IP65 rating, providing resistance to dust and water. This makes them the perfect choice for areas with high humidity, ensuring optimal performance even in outdoor settings.

GROUND SERIES

OUTDOOR SPEAKERS

INSTALLATION SPEAKERS



GROUND SERIES

OUTDOOR SPEAKERS

INSTALLATION SPEAKERS



Ground 4T

2 WAYS
PASSIVE
SPEAKERS



Ground 5T

2 WAYS
PASSIVE
SPEAKERS



Ground 6T

2 WAYS PASSIVE
SPEAKERS



Ground Sub 10T

PASSIVE
SUBWOOFER

GROUND SERIES

SPECIFICATIONS

INSTALLATION SPEAKERS

MODEL	GROUND 4T	GROUND 5T	GROUND 6T	GROUND SUB 10T
Type	Passive 2 Ways	Passive 2 Ways	Passive 2 Ways	Passive
Woofer Driver	4"	5,25"	6,5"	10"
Woofer voice coil	1"	1"	1"	2"
HF Driver type	Tweeter	Tweeter	Tweeter	N/A
HF Driver	0,75" Silk Dome	1" Silk Dome	1" Silk Dome	N/A
Frequency Response	120Hz-20KHz	110Hz-20KHz	100Hz-20KHz	50Hz-300Hz
Maximum SPL (dB)	95dB	96dB	96dB	95dB
Sensitivity (1w/1m)	83dB	84dB	85dB	86dB
Impedance Type	100V/70V/Low-z	100V/70V/Low-z	100V/70V/Low-z	4 ohms
Mount	Pendant/Wall/Ground	Pendant/Wall/Ground	Pendant/Wall/Ground	Pendant/Wall/Ground
Amp Inputs	1+1 Parallel	1+1 Parallel	1+1 Parallel	1
Amp Inputs connector	Euroblock	Euroblock	Euroblock	Wired
Load Power (RMS)	20Wz- 100V/20W/10W/5W/2,5W	30Wz- 100V/30W/15W/7,5W/3,75W	40Wz- 100V/40W/20W/10W/5W	150W
Enclosure Finish	ABS IP65	ABS IP65	ABS IP65	ABS IP65
Weight	3,1Kg	4,33Kg	5,32Kg	9,54Kg
Dimensions	138mmX138mmX190mm	170mmX170mmX240mm	208mmX208mmX280mm	300mmX328mmX393,5mm
Solutions	Commercial Sport & Wellness Hospitality Leisure	Commercial Sport & Wellness Hospitality Leisure	Commercial Sport & Wellness Hospitality Leisure	Commercial Sport & Wellness Hospitality Leisure

OASIS 6T

OUTDOOR SPEAKERS

INSTALLATION SPEAKERS

MADE FOR YOU

Meet the Oasis Series – outdoor passive speakers engineered for superior outdoor audio. With a 6.5-inch polypropylene woofer and a 1-inch titanium tweeter, these speakers deliver precise and clean high frequencies.

Elevate your outdoor ambiance with the Oasis Series – where precision and durability converge in a compact speaker designed for nature's harmony. Enjoy pristine audio in gardens, patios, or poolside settings with the Oasis Series as your reliable and stylish audio companion.



OASIS 6T

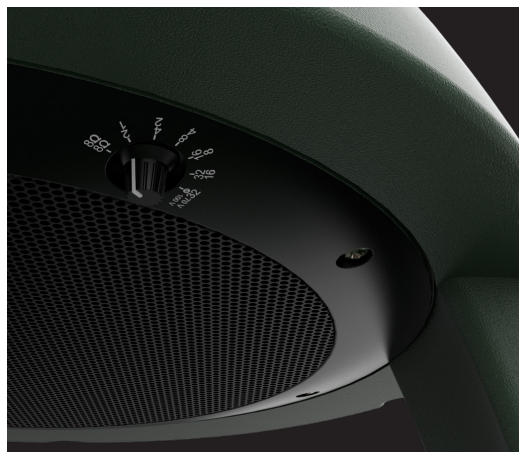
OUTDOOR SPEAKERS

INSTALLATION SPEAKERS

SPECIFICATIONS

Boasting a discreet design and robust resistance to dust and water, the Oasis Series is the ideal outdoor speaker. Its army green color seamlessly blends with the environment, providing both style and camouflage.

MODEL	OASIS 6T
Type	Passive 2 Ways
Woofer Driver	6,5"
Woofer voice coil	1"
HF Driver type	Tweeter
HF Driver	1" titanium
HF Driver voice coil	1"
Frequency Response	55Hz-20KHz
Maximum SPL (dB)	100dB
Sensitivity (1w/1m)	91dB
Impedance Type	100V/70V/Low-z
Mount	Stand
Amp Input Connector	Wired
Load Power (RMS)	z65w 100/2W/4W/8W/16W/32W
Load Power Peak	130W
Enclosure Finish	ABS IP56
Weight	5Kg
Dimensions	365mm (D) 409mm (H)
Solutions	Hospitality Leisure Sport & Wellness Residential



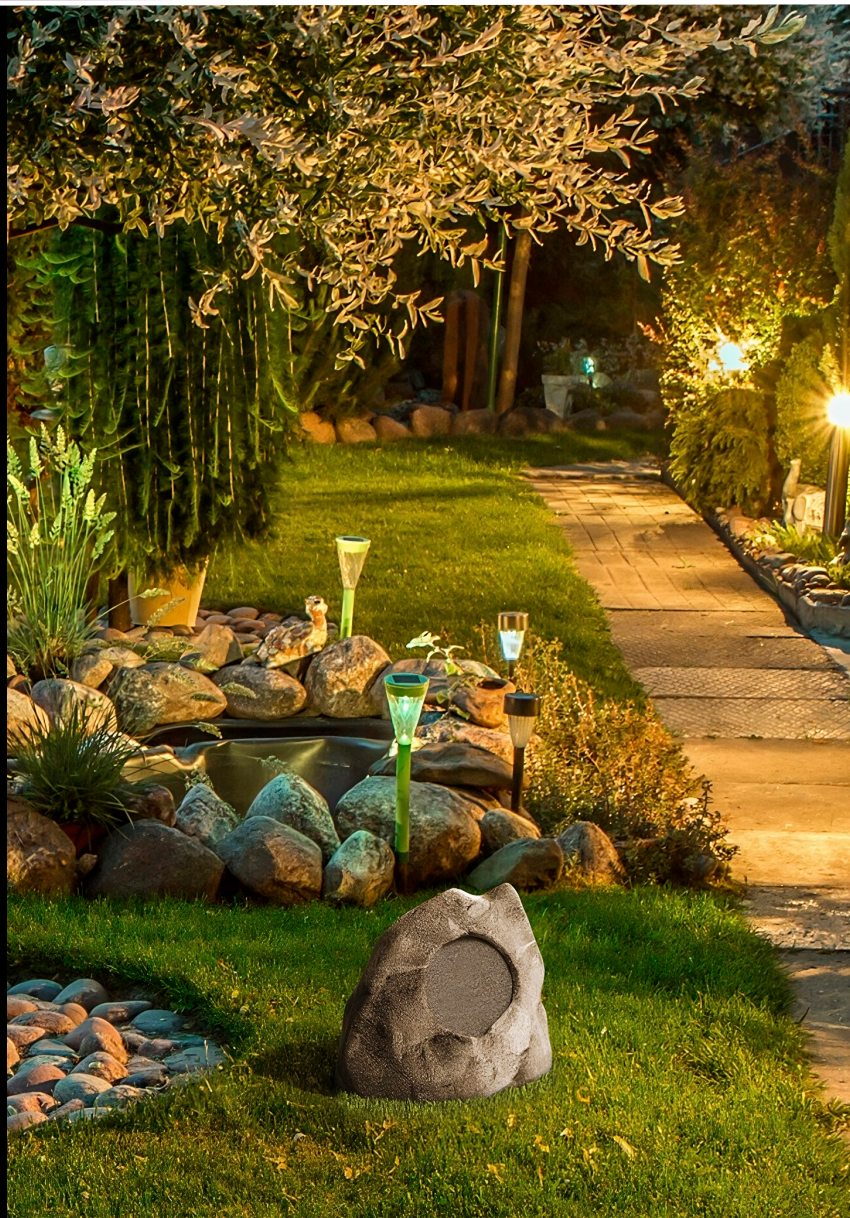
ROCK 6T

OUTDOOR SPEAKERS

INSTALLATION
SPEAKERS

YOU ROCK!

Audibax Rock 6T is a 6.5-inch outdoor passive speaker designed for seamless integration into nature. Boasting dust and water resistance, it's the perfect audio solution for areas with high humidity. The discreet rock-shaped design allows it to blend seamlessly into outdoor patios, providing both functionality and aesthetic harmony with its surroundings. Elevate your outdoor audio experience with the Rock Series, where performance meets camouflage for an immersive sound ambiance in your outdoor spaces.



ROCK 6T

OUTDOOR SPEAKERS

INSTALLATION
SPEAKERS

SPECIFICATIONS

MODEL	ROCK 6T
Type	Passive 2 Ways
Woofer Driver	6,5"
Woofer voice coil	1"
HF Driver type	Tweeter
HF Driver	0,75mm silk dome
HF Driver voice coil	0,5"
Frequency Response	75Hz-20KHz
Maximum SPL (dB)	98dB
Sensitivity (1w/1m)	87dB
Impedance Type	100V/70V
Mount	Ground
Amp Inputs	1+1 Parallel
Amp Inputs Connector	Wired
Load Power (RMS)	70V/30W- 100V/30W
Load Power Peak	60W
Enclosure Finish	LLDPE IP56
Weightl	5,1Kg
Dimensions	320x320x270mm
Solutions	Hospitality Leisure Sport & Wellness Residential



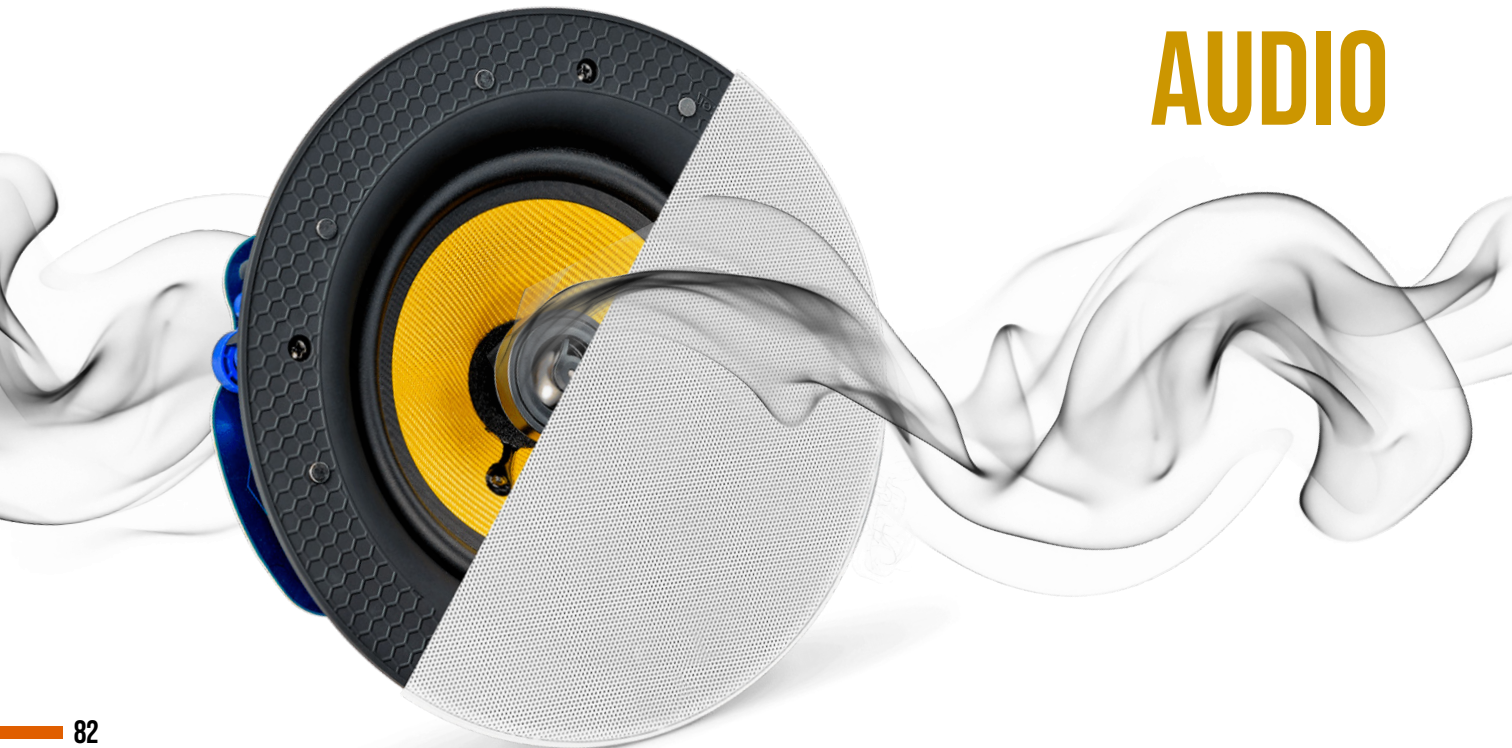
CST SERIES

CEILING SPEAKERS

INSTALLATION SPEAKERS

Unveiling the CST Series – round, recessed ceiling speakers designed for seamless installation. Available in elegant white, these speakers come in 5, 6.5, and 8-inch options, catering to various spaces. Crafted from durable ABS, the CST Series combines robust build quality with a sleek appearance. Ideal for both commercial and residential use, these speakers offer premium audio performance in a discreet and stylish package. Elevate your ceiling audio with the CST Series – where design meets functionality seamlessly. Choose these compact ABS speakers for a powerful yet unobtrusive sound solution.

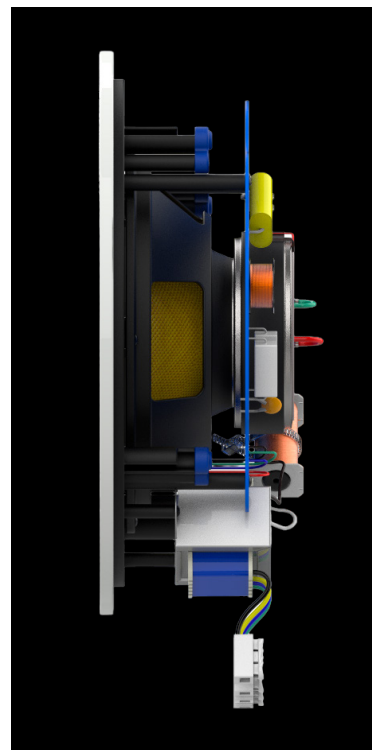
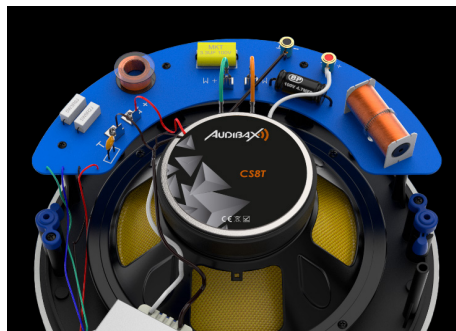
**ENRICH YOUR
SURROUNDINGS
WITH EXCEPTIONAL
AUDIO**



CST SERIES

CEILING SPEAKERS

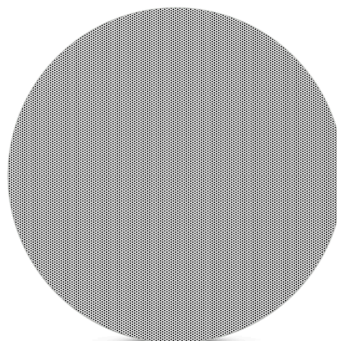
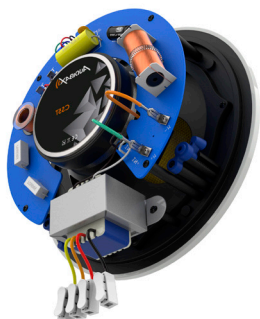
INSTALLATION SPEAKERS



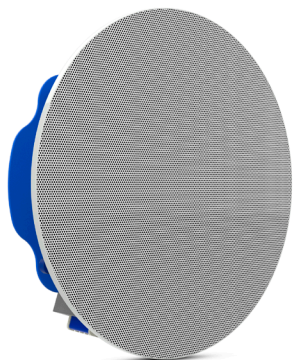
CST SERIES

CEILING SPEAKERS

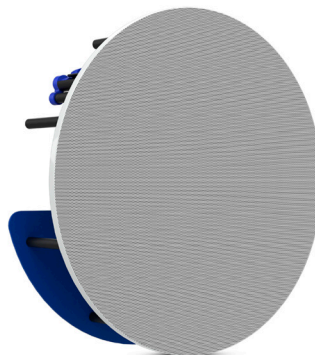
INSTALLATION SPEAKERS



CS5T
CEILING
SPEAKERS



CS6T
CEILING
SPEAKERS



CS8T
CEILING
SPEAKERS

CST SERIES

SPECIFICATIONS

INSTALLATION SPEAKERS

MODEL	CS5T	CS6T	CS8T
Type	Passive	Passive	Passive
Woofer Driver	5"	6,5"	8"
Woofer voice coil	1"	1"	1"
HF Driver type	Tweeter	Tweeter	Tweeter
HF Driver	0,75" titanium	0,75" titanium	0,75" titanium
HF Driver voice coil	0.8"	0.8"	0.8"
Frequency Response	70Hz-20KHz	60Hz-20KHz	50Hz-20KHz
Maximun SPL (dB)	100dB	110dB	120dB
Sensitivity (1w/1m)	90dB	90dB	90dB
Impedance Type	100V/70V/Low-z	100V/70V/Low-z	100V/70V/Low-z
Mount	Ceiling	Ceiling	Ceiling
Amp inputs connector	EuroBlock+ Screw	EuroBlock+ Screw	EuroBlock+ Screw
Load power (RMS)	z40W/100V/3,75W/7,5W/15W	z60w 100v/7,5W/15W/30W	z80w 100V/10W/20W/40W
Load Power Peak	80W	120W	160W
Enclosure Finish	ABS	ABS	ABS
Weight	1.3KG	1.8KG	2.5KG
Dimensions	Φ205*80MM	Φ235*85MM	Φ277*105MM
Solutions	Retail Residential Sport & Wellness Leisure	Retail Residential Sport & Wellness Leisure	Retail Residential Sport & Wellness Leisure

FLINT KIT

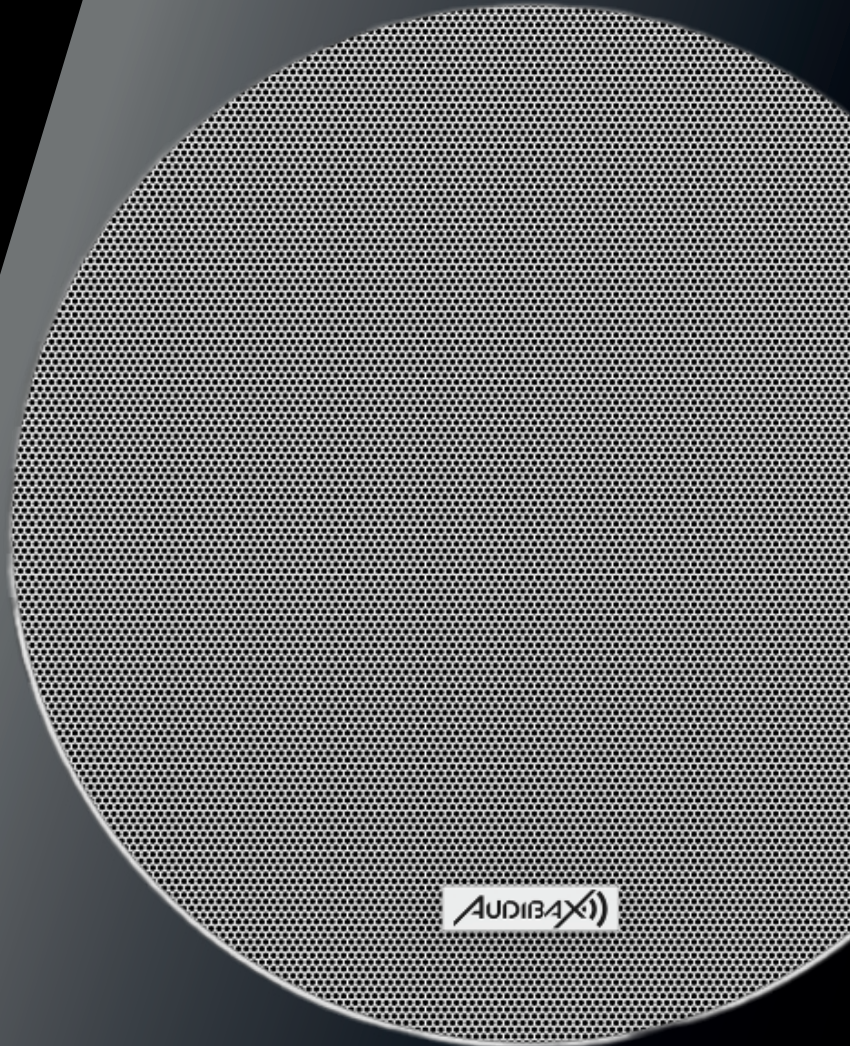
CEILING SPEAKERS

INSTALLATION
SPEAKERS

ELEVATING EVERY MOMENT WITH PRECISION SOUND

Introducing the Audibax Flint Kit – a stereo music system consisting of a high-fidelity Bluetooth digital amplifier and two full-range ceiling speakers. Our Flint Kit is not only incredibly easy to install but also delivers exceptional sound quality.

Featuring a modern design and compact size, the Flint Kit is perfect for smaller environments such as residential rooms, small offices and retail spaces.



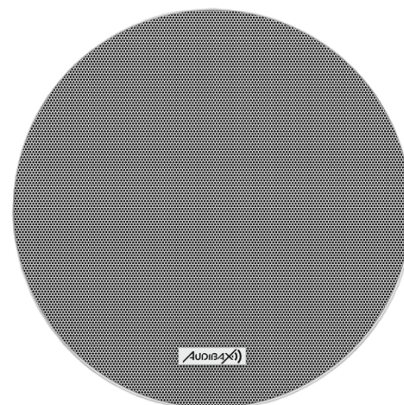
FLINT KIT

CEILING SPEAKERS

INSTALLATION SPEAKERS

SPECIFICATIONS

MODEL	FLINT KIT
Type	Active
Woofer Driver	2x6"
Frequency Response	20Hz-20KHz
Sensitivity (1w/1m)	95dB
Impedance Type	8 ohms
Mount	Ceiling/Stand/Wall
Amp inputs	1+1 Parallel
Amp inputs connector	EuroBlock+Screw
Bluetooth	Bluetooth+Radio
USB/Radio/Player	USB/MSD/SD
Load power (RMS)	5W+5W
Load Power Peak	10W+10W
Enclosure Finish	ABS
Solutions	Retail Hospitality Sport & Wellness Leisure



DROP SERIES

PENDANT SPEAKERS

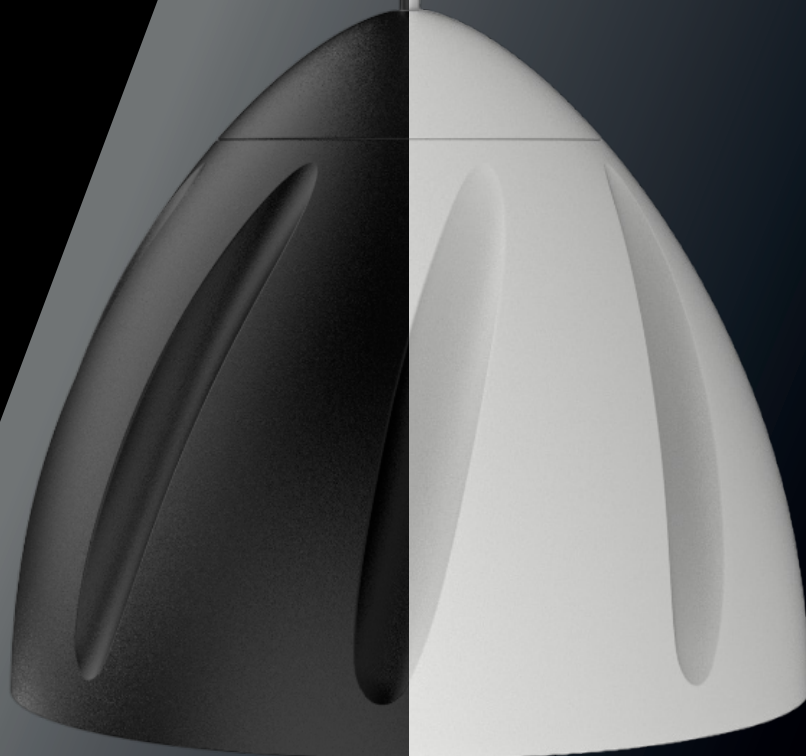
INSTALLATION SPEAKERS

DROPS THE VIBE

Drop Series is a line of passive pendant speakers designed for ceiling installations. With their simple and elegant design, the Drop Series becomes the ideal choice for venues such as museums, restaurants, entertainment centers, and more.

Drop 6 offers adjustable power settings (40-20-10-5W) and operates on a two-way system, ensuring high-quality sound throughout the entire space. Featuring a 6.5-inch woofer and a 1-inch tweeter, the Drop 6 delivers a dynamic audio experience, making it the perfect solution for creating a sophisticated ambiance in various settings.

The pendant design of the Drop Series adds a touch of modernity to any space, allowing for seamless integration into the architecture. Available in black and white.



DROP SERIES

PENDANT SPEAKERS

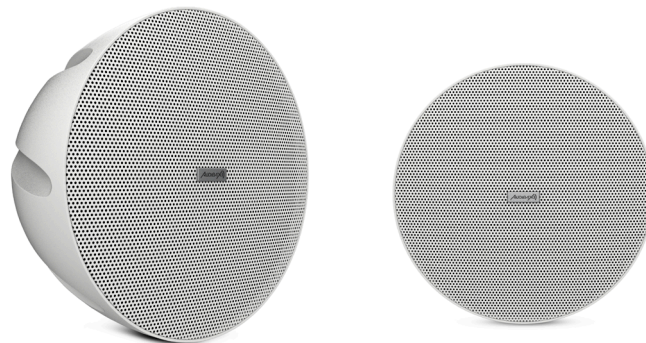
INSTALLATION SPEAKERS

SPECIFICATIONS

MODEL	DROP 6
Type	Passive 2 Ways
Woofer Driver	6,5"
HF Driver type	Tweeter
HF Driver	0,75"
Frequency Response	60Hz-22KHz
Sensitivity (1w/1m)	88dB
Impedance Type	100V/70V/Low-z
Mount	Ceiling
Mount Type	Flying points
Amp inputs	1+1 Parallel
Amp inputs connector	Euroblock + Screw
Load power (RMS)	40Wz-100V/40W/20W/10W/5W
Enclosure Finish	ABS
Weight	3,5Kg
Dimensions	OD: 252mm H:240mm
Solutions	Commercial Sport & Wellness Hospitality Leisure



Drop 6 Black



Drop 6 White

AMPLIFIERS

Boast premium audio quality that ensures you don't just hear the music; you feel it. Our amplifiers are powered by cutting-edge sound processing technology, delivering a revolutionary listening experience. Elevate your beats with our dynamic bass boost feature. Feel the rhythm pulsate through your veins as our amplifiers bring out the deep, resonant bass that adds a new dimension to your music.



AUDIBAX



USB



SD



MEDIAPLAYER



MA DSP SERIES

INSTALLATION AMPLIFIERS

AMPLIFIERS

AMPLIFY THE MOMENTS THAT MATTER!

Introducing the MA DSP Series – A symphony of innovation with 2 and 4-channel models, available in analog and Dante versions. These multifunctional network DSP power amplifiers deliver 2 * 500W @ 4Ω, 2 * 300W @ 8Ω, bridge 1000W @ 8Ω, and constant voltage 100V-1000W @ 10Ω for the 2-channel, and 4 * 500W @ 4Ω, 4 * 300W @ 8Ω, bridge 600W @ 8Ω, and constant voltage 100V-600W @ 10Ω for the 4-channel. Enjoy real-time remote monitoring and customizable DSP functions, ensuring optimal performance in any setting. The sleek software interface guarantees simplicity, while diverse connection options cater to varied environments. Elevate your audio experience with MA DSP – where power meets precision.



MA DSP SERIES

INSTALLATION AMPLIFIERS

AMPLIFIERS



MA DSP SERIES

INSTALLATION AMPLIFIERS

AMPLIFIERS



MA2500T DSP

MATRIX AMPLIFIERS



MA2500T DSP Dante

MATRIX AMPLIFIERS



MA4500T DSP

MATRIX AMPLIFIERS



MA4500T DSP Dante

MATRIX AMPLIFIERS

MA DSP SERIES

SPECIFICATIONS

AMPLIFIERS

MODEL	MA2500T DSP	MA2500T DSP DANTE	MA4500T DSP	MA4500T DSP DANTE
Type	Matrix Amplifier	Matrix Amplifier	Matrix Amplifier	Matrix Amplifier
Amp Out	Low-z /70/100V	Low-z /70/100V	Low-z /70/100V	Low-z /70/100V
Channels Amp	2	2	4	4
Power Per Channel 8 Ohms (RMS)	300W	300W	300W	300W
Amp type	Class D	Class D	Class D	Class D
THD+Noise @ 1kHz Full Power	<0,01%	<0,01%	<0,01%	<0,01%
Channel crosstalk @ 1 kHz	-70dB	-70dB	-70dB	-70dB
Singal To Noise Ratio	>94dB	>94dB	>94dB	>94dB
Power Bridge	LoZ 600W/100V-600W	LoZ 600W/100V-600W	LoZ 2x600W / 2 x100V-600W	LoZ 2x600W / 2 x100V-600W
Dimensions	1 Unit 19"	1 Unit 19"	1 Unit 19"	1 Unit 19"
Inputs Line/Mic Channel	2	2 XLR + 2 Dante	4	4 XLR+ 4 Dante
Inputs Line Connector	Euroblock+XLR	Euroblock+XLR+Dante	Euroblock+XLR	Euroblock+XLR+Dante
Out Line Connector	XLR	Euroblock+XLR+Dante	Euroblock+XLR	Euroblock+XLR+Dante
Interface control	USB/Ethernet/Rs232/485	USB/Ethernet/Rs232/485	USB/Ethernet/Rs232/485	USB/Ethernet/Rs232/485
Tone control	DSP Control	DSP Control	DSP Control	DSP Control
DSP Processor	DSP Control + Ethernet	DSP Control + Ethernet	DSP Control + Ethernet	DSP Control + Ethernet
Out Connectors Amp	Speakon + Terminal	Speakon + Terminal	Terminal	Terminal
Alarm Mode	Limiter & Peak	Limiter & Peak	Limiter & Peak	Limiter & Peak
Mount Type	Rack Mount	Rack Mount	Rack Mount	Rack Mount
Power Supply	AC 180V-264VAC, 50-60Hz	AC 180V-264VAC, 50-60Hz	AC 180V-264VAC, 50-60Hz	AC 180V-264VAC, 50-60Hz
Weight	3,2Kg	3,2Kg	4,2Kg	4,2Kg
Dimensions	483 x 300 x 44,5 mm	483 x 300 x 44,5 mm	483 x 300 x 44,5 mm	483 x 300 x 44,5 mm
Solutions	Retail Hospitality Sport &Wellness Leisure	Retail Hospitality Sport &Wellness Leisure	Retail Hospitality Sport &Wellness Leisure	Retail Hospitality Sport &Wellness Leisure

PA SERIES

INSTALLATION AMPLIFIERS

AMPLIFIERS

BEYOND SOUND, BEYOND POWER... PA SERIES!!

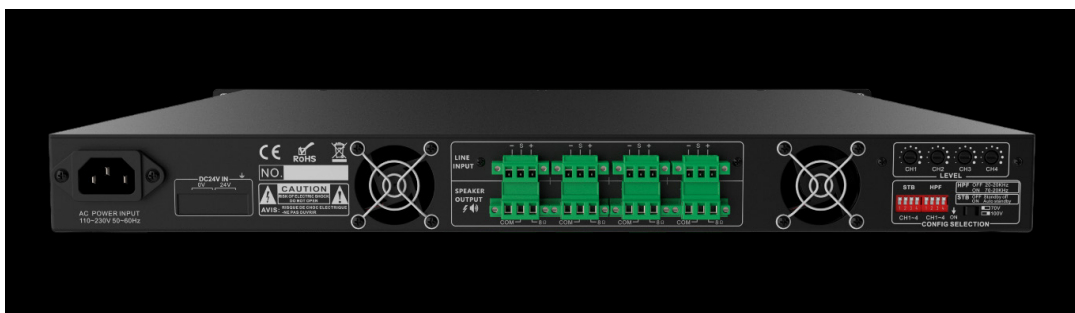
Introducing the PA Series, where cutting-edge class-D power meets unparalleled efficiency. With advanced switching power technology, these amplifiers boast a mere whisper of power consumption and a remarkable 85% efficiency, saving both energy and rack space. Operating at 240W/500W across two or four channels, they effortlessly transform into a cost-effective solution for multi-zone public address systems. The dual high impedance (100V) and low impedance (4ohms) outputs make them a versatile choice for both PA fixed installations and high-fidelity stereo setups, promising longevity and premium performance.



PA SERIES

INSTALLATION AMPLIFIERS

AMPLIFIERS



PA SERIES

INSTALLATION AMPLIFIERS

AMPLIFIERS



PA2250T
AMPLIFIERS



PA2500T
AMPLIFIERS



PA4250T
AMPLIFIERS



PA4500T
AMPLIFIERS

PA SERIES

SPECIFICATIONS

AMPLIFIERS

MODEL	PA2250T	PA2500T	PA4250T	PA4500T
Type	Amplifier	Amplifier	Amplifier	Amplifier
Amp Out	Low-z /70/100V	Low-z /70/100V	Low-z /70/100V	Low-z /70/100V
Channels Amp	2	2	4	4
Power Per Channel 8 Ohms (RMS)	240W	500W	240W	500W
Amp type	Class D	Class D	Class D	Class D
THD+Noise @ 1kHz Full Power	<0,01%	<0,01%	<0,01%	<0,01%
Channel crosstalk @ 1 kHz	>60dB	>60dB	>60dB	>60dB
Signal To Noise Ratio	>80dB	>80dB	>80dB	>80dB
Dimensions	1 Unit 19"	1 Unit 19"	1 Unit 19"	1 Unit 19"
Zone Control Vol	2	2	4	N/A
Inputs Line/Mic Channel	2	2	4	4
Inputs Line Connector	Euroblock	Euroblock	Euroblock	Euroblock
Interface control	N/A	N/A	N/A	USB/RS232/485
Tone control	Rear Gain Volumen & DIP config	Rear Gain Volumen & DIP config	Rear Gain Volumen & DIP config	DSP Control
DSP Processor	N/A	N/A	N/A	DSP Control + Ethernet
Out Connectors Amp	EuroBlock+ Screw	EuroBlock+ Screw	EuroBlock+ Screw	EuroBlock+ Screw
Alarm Mode	Limiter & Peak	Limiter & Peak	Limiter & Peak	Limiter & Peak
Mount Type	Rack Mount	Rack Mount	Rack Mount	Rack Mount
Power Supply	AC 100-240V, 50-60Hz	AC 100-240V, 50-60Hz	AC 100-240V, 50-60Hz	AC 100-240V, 50-60Hz
Weight	7,3Kg	8,2Kg	8,8Kg	9,8Kg
Dimensions	484 x 420 x 44 mm	484 x 420 x 44 mm	484 x 420 x 44 mm	484 x 420 x 44 mm
Solutions	Retail Hospitality Sport &Wellness Leisure	Retail Hospitality Sport &Wellness Leisure	Retail Hospitality Sport &Wellness Leisure	Retail Hospitality Sport &Wellness Leisure

AKRON SERIES

INSTALLATION AMPLIFIERS

AMPLIFIERS

AMPLIFY YOUR EXPERIENCE

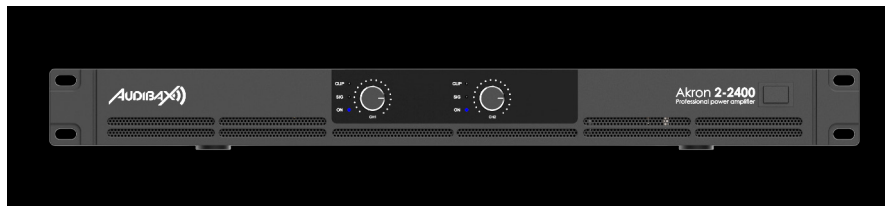
Introducing Akron, a groundbreaking series of digital power amplifiers that redefine the audio experience. Serving as the gateway to a revolutionary sonic journey, Akron amplifiers harness the power of Unipolar Pulse Density Modulation (UPDM) technology to deliver an exceptionally stable sound quality while maintaining minimal power consumption. This series includes the Akron 2-2400 featuring a power bridge of 1200w and the Akron 4-4800 with a power bridge of 2x1200w. These amplifiers not only embrace cutting-edge UPDM technology but also boast impressive power capabilities, ensuring a dynamic and immersive audio experience for enthusiasts seeking the pinnacle of sound performance.



AKRON SERIES

INSTALLATION AMPLIFIERS

AMPLIFIERS



AKRON SERIES

INSTALLATION AMPLIFIERS

AMPLIFIERS



Akron 2-2400

AMPLIFIERS



Akron 4-4800

AMPLIFIERS

AKRON SERIES

SPECIFICATIONS

AMPLIFIERS

MODEL	AKRON 2-2400	AKRON 4-4800
Type	Amplifier	Amplifier
Amp Out	Low-z	Low-z
Channels Amp	2	4
Power Per Channel 8 Ohms (RMS)	600W	600W
Amp type	Class D UDM	Class D UDM
THD+Noise @ 1kHz Full Power	<0,005%	<0,005%
Singal To Noise Ratio	>150dB	>150dB
Power Bridge	1200W	2x1200W
Damping Factor	>1000	>1000
Dimensions	1 Unit 19"	1 Unit 19"
Zone Control Vol	2	4
Inputs Line/Mic Channel	2	4
Inputs Line Connector	XLR	XLR
Out Line Connector	XLR	XLR
Tone control	Front Gain Volumen	Front Gain Volumen
Out Connectors Amp	Speakon 4-p	Speakon 4-p
Alarm Mode	Limiter & Peak	Limiter & Peak
Weight	3,7Kg	4,8Kg
Dimensions	480 x 50 x 230 mm	480 x 50 x 230 mm
Solutions	Rental Hospitality Sport &Wellness Leisure	Rental Hospitality Sport &Wellness Leisure

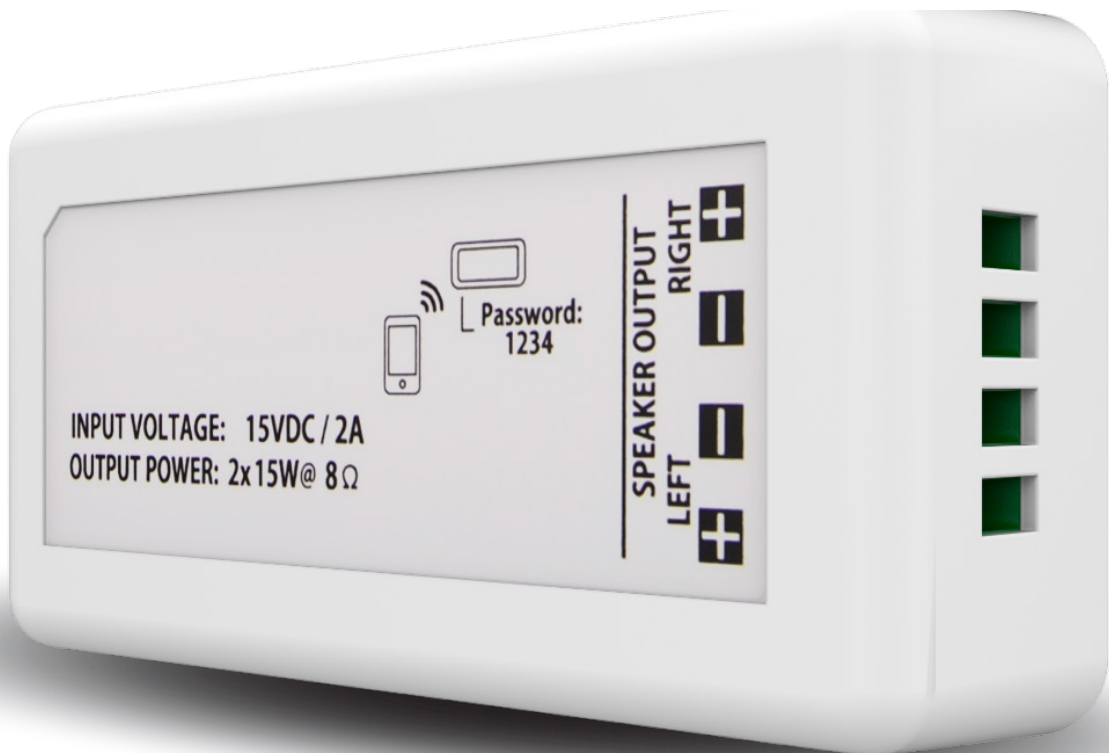
LEXA 30

INSTALLATION AMPLIFIERS

AMPLIFIERS

EXPAND YOUR AUDIO ADVENTURE

Elevate your auditory experiences with the Audibax Lexa 30 Bluetooth Installation Amplifier. This compact unit seamlessly blends power, versatility, and audio quality in an elegant, minimalist design. Boasting a nominal power of 2x15W (RMS) and an 8-ohm output impedance, it delivers a sophisticated audio solution.



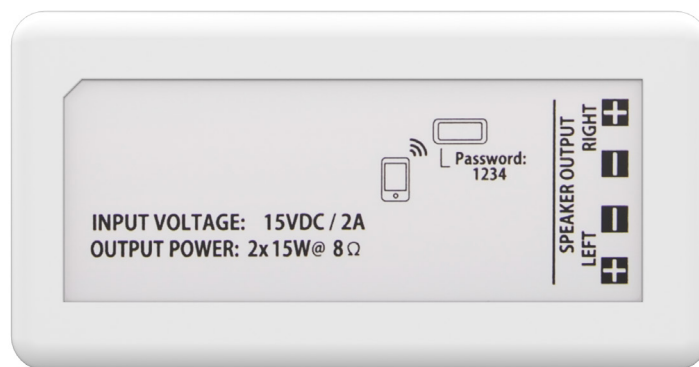
LEXA 30

INSTALLATION AMPLIFIERS

AMPLIFIERS

SPECIFICATIONS

MODEL	LEXA 30
Type	Amplifier
Amp Out	Low-z
Channels Amp	2
Power Per Channel 8 Ohms (RMS)	15W
Amp type	Class D
THD+Noise @ 1kHz Full Power	0,03%
Dimensions	Slim
Inputs Line/Mic Channel	Bluetooth
Interface control	Bluetooth
Out Connectors Amp	Terminal
Power Supply	100-240 V CA a 15 V CC
Weight	0,25Kg
Dimensions	85 x 45 x 23mm
Solutions	Retail Hospitality Sport &Wellness Leisure



DAYTON SERIES

INSTALLATION AMPLIFIERS

AMPLIFIERS

THE BEAUTY OF SOUND AMPLIFIED!



DAYTON SERIES

INSTALLATION AMPLIFIERS

AMPLIFIERS



DAYTON SERIES

INSTALLATION AMPLIFIERS

AMPLIFIERS



Dayton 300

CLASS AB POWER STAGE



Dayton 600

CLASS AB POWER STAGE

DAYTON SERIES

SPECIFICATIONS

AMPLIFIERS

MODEL	DAYTON 300	DAYTON 600
Type	Amplifier	Amplifier
Amp Out	Low-z	Low-z
Channels Amp	2	2
Power Per Channel 8 Ohms (RMS)	150W	300W
Amp type	Class A/B	Class A/B
THD+Noise @ 1kHz Full Power	1%	1%
Power Bridge	350W	700W
Dimensions	≥123	≥152
Zone Control Vol	3 unit 19"	3 unit 19"
Inputs Line/Mic Channel	2	2
Inputs Line Connector	XLR	XLR
Out Line Connector	Jack 6,3	Jack 6,3
Tone control	Front Gain Volumen	Front Gain Volumen
Out Connectors Amp	Speakon + Terminal	Speakon + Terminal
Mount Type	Metal	Metal
Power Supply	AC 220V-240V	AC 220V-240V
Weight	7,5Kg	11,5Kg
Dimensions	485 x 370 x 105mm	485 x 370 x 105mm
Solutions	Retail Hospitality Education Leisure	Retail Hospitality Education Leisure

ZONE SERIES

MIXING AMPLIFIERS / PRE AMPS

AMPLIFIERS

UNLEASH THE FULL SPECTRUM OF YOUR SOUND!

Introducing the Zone Series, a line of mixer amplifiers delivering flexible audio control for diverse settings. With user-friendly functionality, exceptional sound quality, and a sleek, modern design, it's ideal for restaurants, hotels, stores, offices, or public spaces. Available in 120W, 240W, and 360W versions, each unit features a music player, FM tuner, and Bluetooth connectivity for a comprehensive audio solution.



ZONE SERIES

MIXING AMPLIFIERS / PRE AMPS

AMPLIFIERS



ZONE SERIES

MIXING AMPLIFIERS / PRE AMPS

AMPLIFIERS



Zone 120 BT
ZONE SYSTEM



Zone 240 BT
ZONE SYSTEM



Zone 360 BT
ZONE SYSTEM

ZONE SERIES

SPECIFICATIONS

AMPLIFIERS

MODEL	ZONE 120 BT	ZONE 240 BT	ZONE 360 BT
Type	Zone System	Zone System	Zone System
Amp Out	low-Z & 70V/100V zone Control	low-Z & 70V/100V zone Control	low-Z & 70V/100V zone Control
Channels Amp	1	1	1
Power Per Channel 8 Ohms (RMS)	120W	240W	360W
THD+Noise @ 1kHz Full Power	<0,5%	<0,5%	<0,5%
Channel crosstalk @ 1 kHz	>70dB	>70dB	>70dB
Singal To Noise Ratio	>90dB	>90dB	>90dB
Dimensions	3 unit 19"	3 unit 19"	3 unit 19"
Zone Control Vol	4	4	4
Inputs line Mixer	5	5	5
Inputs Line/Mic Mixer Connector	Jack 6,3 & XLR combi RCA	Jack 6,3 & XLR combi RCA	Jack 6,3 & XLR combi RCA
USB/Radio FM/Player SD	yes	Yes	yes
Bluetooth	yes	Yes	yes
Tone control	Master Mixer	Master Mixer	Master Mixer
Out Connectors Amp	EuroBlock+ Screw	EuroBlock+ Screw	EuroBlock+ Screw
DC supply	24 V DC	24 V DC	24 V DC
Alarm Mode	Chime & Fire	Chime & Fire	Chime & Fire
Mount Type	Metal	Metal	Metal
Power Supply	AC230V-240V / 50-60Hz	AC230V-240V / 50-60Hz	AC230V-240V / 50-60Hz
Dimensions	484 x 89 x 340 mm	484 x 89 x 340 mm	484 x 89 x 340 mm
Solutions	Retail Hospitality Education Leisure	Retail Hospitality Education Leisure	Retail Hospitality Education Leisure

DAYTON SERIES

MIXING AMPLIFIERS / PRE AMPS

AMPLIFIERS

THE BEAUTY
OF **SOUND**
AMPLIFIED!



DAYTON SERIES

MIXING AMPLIFIERS / PRE AMPS

AMPLIFIERS



DAYTON SERIES

MIXING AMPLIFIERS / PRE AMPS

AMPLIFIERS



Dayton 60BT

CLASS D AMPLIFIERS



Dayton 120BT

CLASS D AMPLIFIERS



Dayton 120T BT

CLASS D AMPLIFIERS

DAYTON SERIES

SPECIFICATIONS

AMPLIFIERS

MODEL	DAYTON 60BT	DAYTON 120T BT	DAYTON 120BT
Type	Amplifier	Amplifier	Amplifier
Amp Out	Low-z /70/100V	70V/100V	Low-z /70/100V
Channels Amp	1	1	1
Power Per Channel 8 Ohms (RMS)	60W	120W	120W
Amp type	N/A	N/A	N/A
THD+Noise @ 1kHz Full Power	<1%	<0,5%	<1%
Power Bridge	N/A	N/A	N/A
Damping Factor	N/A	N/A	N/A
Dimensions	Half unit 19"	Slim	Half unit 19"
Inputs line Mixer	3	2	3
Inputs Line/Mic Mixer Connector	Jack 6,3 & XLR combi RCA	Jack 6,3 & XLR combi RCA	Jack 6,3 & XLR combi RCA
Inputs Line/Mic Channel	2	2	2
Inputs Line Connector	RCA	Jack 6,3 & XLR combi RCA	RCA
Out Line Connector	N/A	N/A	N/A
USB/Radio FM/Player SD	USB/Radio	USB	USB/Radio
Bluetooth	Yes	Yes	Yes
Tone control	Master Mixer	Master Mixer	Master Mixer
Out Connectors Amp	EuroBlock+ Screw	EuroBlock+ Screw	EuroBlock+ Screw
DC supply	24 V DC	N/A	24 V DC
Alarm Mode	EMC IN	Priority	EMC IN
Mount Type	Metal	Metal	Metal
Power Supply	AC110V-240V / 50-60Hz	AC230V-240V / 50-60Hz	N/A
Weight	2,6Kg	1,5Kg	3Kg
Dimensions	198 X 247 X 66 mm	200 x 190 x 44 mm	198 X 247 X 66 mm
Solutions	Retail Hospitality Education Leisure	Retail Hospitality Education Leisure	Retail Hospitality Education Leisure

SRM102

MIXING AMPLIFIERS / PRE AMPS

AMPLIFIERS

HARMONY IN EVERY FADER

Discover the Audibax SRM 102, a professional - grade mixer for installations. With 8 inputs, 4 outputs, mute function, and individual volume control, it delivers precision and flexibility for sophisticated audio management in professional settings.



SRM102

MIXING AMPLIFIERS / PRE AMPS

AMPLIFIERS

SPECIFICATIONS

MODEL	SRM102
Type	Mixer
Channels Out	4
Out Line Connector	RCA
Inputs Line/Mic Channel	8
Inputs Line Connector	Jack 6,3 + RCA
Sensitivity Mic in	≤3.2mV
Sensitivity Line in	≤300mV
Tone control	Master Mixer
Dimensions	3 unit 19"
Alarm Mode	Priority
Frequency Response	30Hz-20KHz(±3dB)
Power Supply	AC 220V/50Hz
Weight	6.2kg
Dimensions	484×365×88 mm
Solutions	Retail Hospitality Sport &Wellness Leisure



DIGITAL MATRIX/ PROCESSORS

Take charge of your audio environment by dividing your space into distinct zones. Enjoy different music or audio sources in various areas simultaneously, catering to individual preferences effortlessly. Navigate through zones, adjust volume levels, and choose your preferred sources with a touch. As your audio needs evolve, our matrix/processors solutions grow with you.





USB AUDIO



AUDIBAX
PRO
M88 DSP
DIGITAL AUDIO MATRIX

USB AUDIO



AUDIBAX
PRO
M88 DSP
DIGITAL AUDIO MATRIX

M88 DSP SERIES

DIGITAL MATRIX

DIGITAL MATRIX/
PROCESSORS

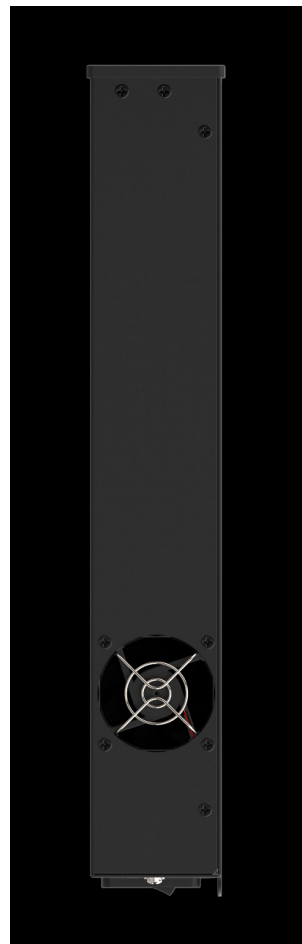
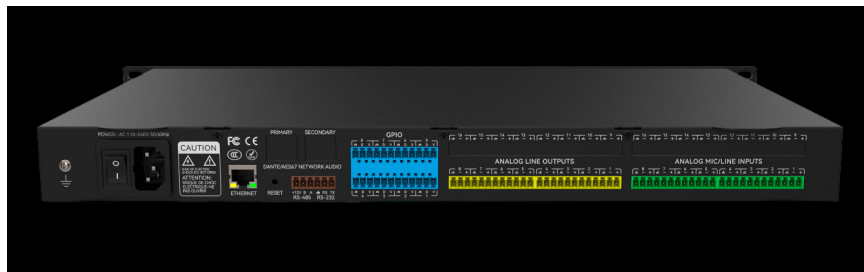
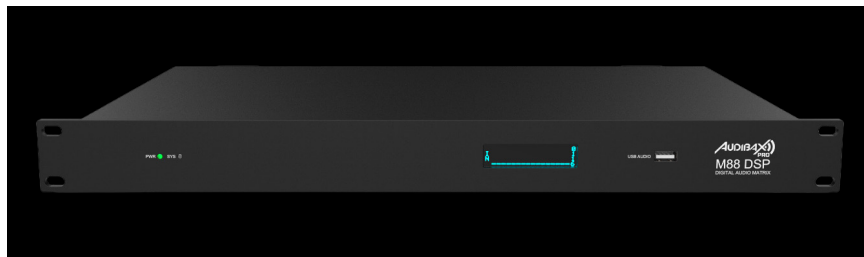
**CRAFTING SYMPHONIES,
CONNECTING REALITIES**



M88 DSP SERIES

DIGITAL MATRIX

DIGITAL MATRIX/
PROCESSORS



M88 DSP SERIES

DIGITAL MATRIX

DIGITAL MATRIX/
PROCESSORS



M88 DSP

DIGITAL MATRIX



M88 DSP Dante

DIGITAL MATRIX

M88 DSP SERIES

SPECIFICATIONS

DIGITAL MATRIX/ PROCESSORS

MODEL	M88 DSP	M88 DSP DANTE
Type	Matrix	Matrix
Channels Out	8	8 analog + 8 Dante
Out Line Connector	Euroblock	Euroblock
Inputs Line/Mic Channel	8	8 Analog + 8 Dante
Inputs Line Connector	Euroblock	Euroblock
Sensitivity Mic in	0-48dB Adjustable	0-48dB Adjustable
Sensitivity Line in	Balance: Ω 9,4 k	Balance: Ω 9,4 k
Tone control	DSP Control	DSP Control
Dimensions	1 Unit 19"	1 Unit 19"
Interface control	USB/Ethernet/Rs232/485	USB/Ethernet/Rs232/485
DSP Processor	48KHz 32-Bit DSP	48KHz 32-Bit DSP
Alarm Mode	Limiter & Peak	Limiter & Peak
Singal To Noise Ratio	112dB	112dB
Frequency response	20Hz-20KHz	20Hz-20KHz
Power Supply	AC110~240V 5Hz-60Hz	AC110~240V 5Hz-60Hz
Weight	3kg	3kg
Dimensions	482 x 260 x 45mm	482 x 260 x 45mm
Solutions	Retail Leisure Hospitality Corporate	Retail Leisure Hospitality Corporate

ADP DSP SERIES

PROCESSORS

DIGITAL MATRIX/ PROCESSORS

YOUR SONIC REVOLUTION!

Unveiling the ADP DSP Series, a pinnacle of Professional Audio Processing driven by DSP technology. Crafted with potent capabilities within a sleek 1U frame, it offers 2x4, 3x6, and 4x8 configurations, adaptable to diverse X-over modes. Ideal for on-site performances, this series sets the stage for unparalleled audio precision.



ADP DSP SERIES

PROCESSORS

DIGITAL MATRIX/ PROCESSORS



ADP DSP SERIES

PROCESSORS

DIGITAL MATRIX/ PROCESSORS



ADP 24 DSP

PROCESSOR

ADP 36 DSP

PROCESSOR



ADP 48 DSP

PROCESSOR



ADP DSP SERIES

SPECIFICATIONS

DIGITAL MATRIX/ PROCESSORS

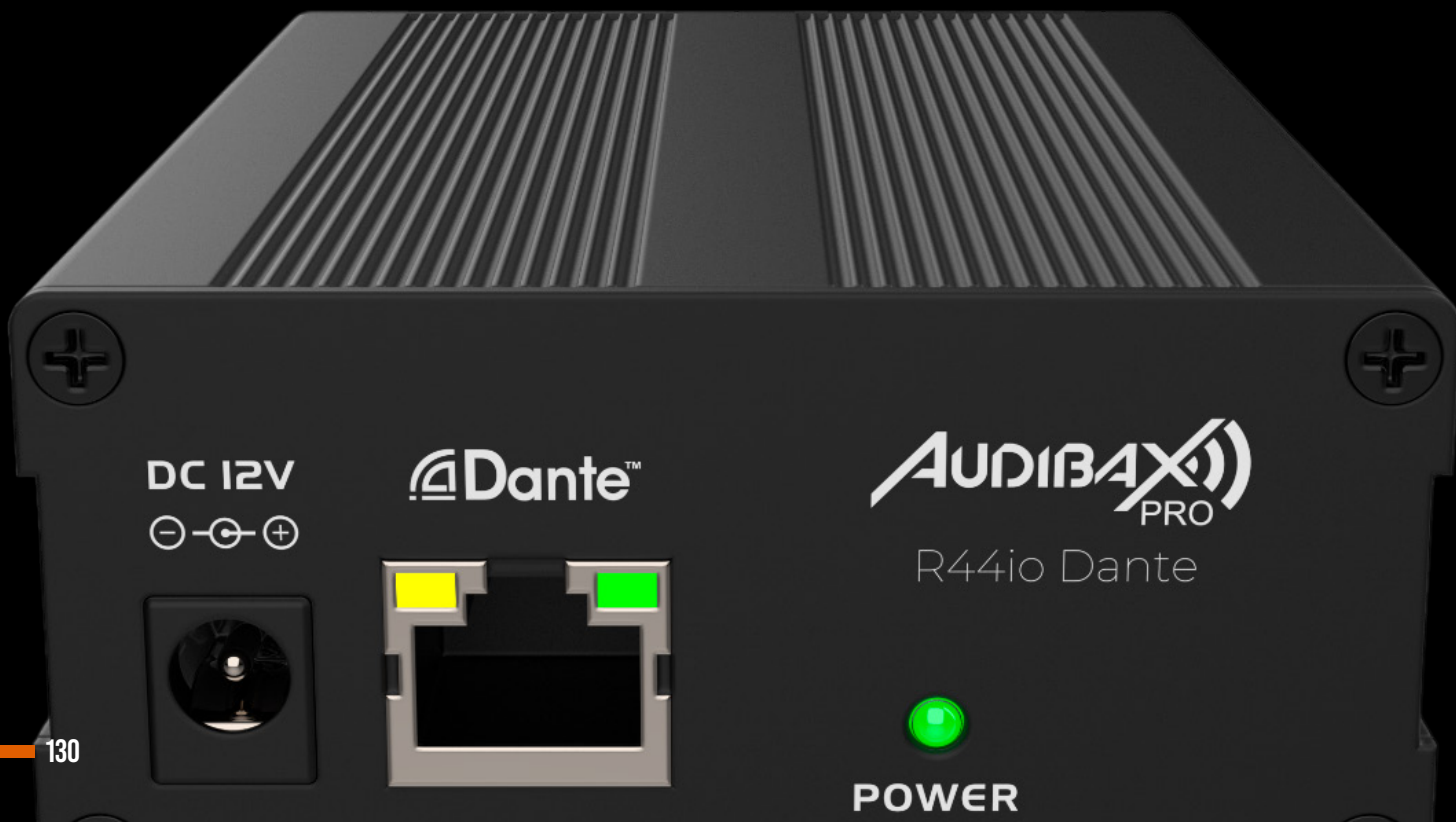
MODEL	ADP 24 DSP	ADP 36 DSP	ADP 48 DSP
Type	Processor	Processor	Processor
Channels Out	4	6	8
Out Line Connector	XLR	XLR	XLR
Inputs Line/Mic Channel	2	3	4
Inputs Line Connector	XLR	XLR	XLR
Sensitivity Line in	Balance: 0dB	Balance: 0dB	Balance: 0dB
Tone control	Button Control Panel	Button Control Panel	Button Control Panel
Dimensions	1 Unit 19"	1 Unit 19"	1 Unit 19"
Interface control	USB/Ethernet/Rs232/485	USB/Ethernet/Rs232/485	USB/Ethernet/Rs232/485
DSP Processor	96KHZ- 32-Bit DSP	96KHZ- 32-Bit DSP	96KHZ- 32-Bit DSP
Alarm Mode	Limiter & Peak	Limiter & Peak	Limiter & Peak
Signal To Noise Ratio	>105dB	>105dB	>105dB
Frequency response	20Hz-20KHz	20Hz-20KHz	20Hz-20KHz
Power Supply	AC 110V/240V 50Hz/60Hz	AC 110V/240V 50Hz/60Hz	AC 110V/240V 50Hz/60Hz
Weight	3kg	3kg	3kg
Dimensions	570×260×90mm	570×260×90mm	570×260×90mm
Solutions	Rental Leisure Hospitality Sport&Wellness	Rental Leisure Hospitality Sport&Wellness	Rental Leisure Hospitality Sport&Wellness

R44 SERIES

DANTE CONVERTERS

DIGITAL MATRIX/
PROCESSORS

CONVERT WITH CONFIDENCE



DC 12V



Dante™

AUDIBAX
PRO

R44io Dante

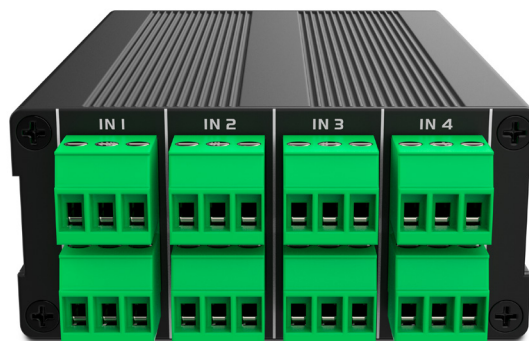


POWER

R44 SERIES

SPECIFICATIONS

DIGITAL MATRIX/ PROCESSORS



SPECIFICATIONS

Audibax R44io Dante interface machine is used for the signal conversion between analog audio signal and Dante digital audio. This processor supports 4-channel analog audio signal balanced input and output, including 4-channel Dante digital audio signal input and output of 2 Dante devices. It is powered by DC12V, which can be used with 802.3af standard POE switch when adding POE splitter.

- **Input:** 4 balanced/unbalanced input
- **Input Impedance:** Greater than 1800 Ω
- **Max. Input Level:** +8dbu @ 0dB gain
- **Output:** 4 balanced/unbalanced output
- **Output Impedance:** 200 Ω balance
- **Max. Output Level:** +20dbu balance
- **Freq. Response:** 20~20KHz, \pm 1dB
- **THD:** Less than 0.02%
- **Power Requirements:** 12V DC
- **Dimensions:** 123x75x35 mm

R22 SERIES

DANTE CONVERTERS

DIGITAL MATRIX/ PROCESSORS

PLUG, PLAY, PERFECTION!

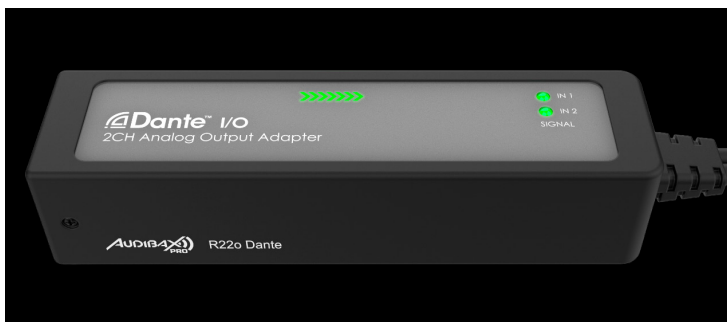
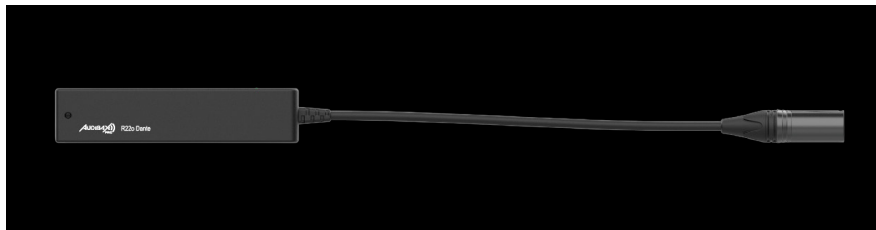
The R22 Dante Series adapters represents a comprehensive high performance Dante device, distinguished by its automation capabilities and user-friendly interface. These adapters seamlessly integrate with all Dante interfaces, offering a full suite of features expected from Dante audio networks. Moreover, this series excels in delivering high-fidelity audio quality restoration, ultra-low latency, and precise sampling rate synchronization throughout the entire network.



R22 SERIES

DANTE CONVERTERS

DIGITAL MATRIX/ PROCESSORS



R22 SERIES

DANTE CONVERTERS

DIGITAL MATRIX/
PROCESSORS



R22i Dante

2 CHANNEL INPUT DANTE CONVERTER



R22o Dante

2 CHANNEL OUTPUT DANTE CONVERTER

R22 SERIES

SPECIFICATIONS

DIGITAL MATRIX/ PROCESSORS

R22i Dante

DANTE CONVERTERS

- Analog 2CH input
- Dante 2CH output
- AES67 compliant
- **Sampling rate:** 44.1kHz/48kHz/96kHz
- **Maximum input level:** +18dBu
- **Dynamic range:** 110dBu
- **THD+N:** 0.007% at 1kHz+4dBu
- **Signal-to-noise Ratio:** >110dB
- **Frequency Response:** 20Hz to 20kHz(-/+0.2dB)
- **Connector:** RJ45 & 2XLR-F
- **Data Bits:** 24bit
- **Dante Device delay:** <1ms
- **Power Supply:** Class 1 802.3af PoE

R22o Dante

DANTE CONVERTERS

- Dante 2CH input
- Analog 2CH output
- AES67 compliant
- **Sampling rate:** 44.1kHz/48kHz/96kHz
- **Maximum input level:** +18dBu
- **Dynamic range:** 116dBu
- **THD+N:** 0.001% at 1kHz 4dBu
- **Signal-to-noise Ratio:** 116dB
- **Frequency Response:** 20Hz to 20kHz(-/+0.1dB)
- **Connector:** RJ45 & 2XLR-M
- **Data Bits:** 24bitDante Device delay: <1ms
- **Power Supply:** Class 1 802.3af PoE

M88 WP SERIES

WALL PANELS

DIGITAL MATRIX/
PROCESSORS



M88 WP SERIES

WALL PANELS

DIGITAL MATRIX/
PROCESSORS



M88 WP SERIES

WALL PANELS

DIGITAL MATRIX/
PROCESSORS



M88 WP1

DANTE WALL
CONTROL PANEL



M88 WP2

DANTE WALL
CONTROL PANEL

M88 WP SERIES

SPECIFICATIONS

DIGITAL MATRIX/ PROCESSORS

M88 WP1

DANTE WALL CONTROL PANEL

- **Control knob:** 1
- **Control protocol:** UDP communication protocol
- **Address setting method:** TCP/IP
- **Signal cable length:** 100 meters
- **Power supply:** POE power supply
- **Connection port:** RJ-45
- **Power consumption:** <100mw
- **Color:** Silver
- **Material:** Aluminum alloy sandblasting

M88 WP2

DANTE WALL CONTROL PANEL

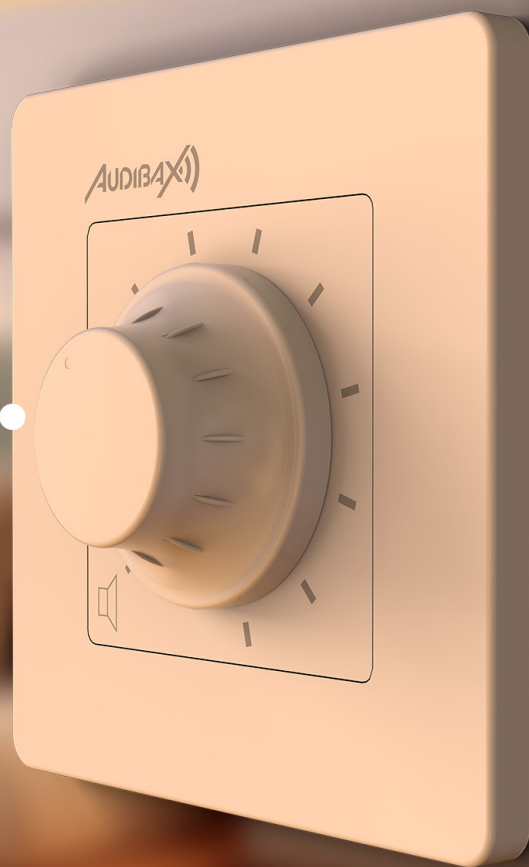
- **Programmable buttons:** 8 (support user-defined)
- **Control knob:** 1
- **Control protocol:** UDP communication protocol
- **Address setting method:** TCP/IP
- **Signal cable length:** 100 meters
- **Power supply:** POE power supply
- **Connection port:** RJ-45
- **Power consumption:** <100mw
- **Color:** Silver
- **Material:** Aluminum alloy sandblasting

WALL SERIES

WALL PANELS

DIGITAL MATRIX/
PROCESSORS

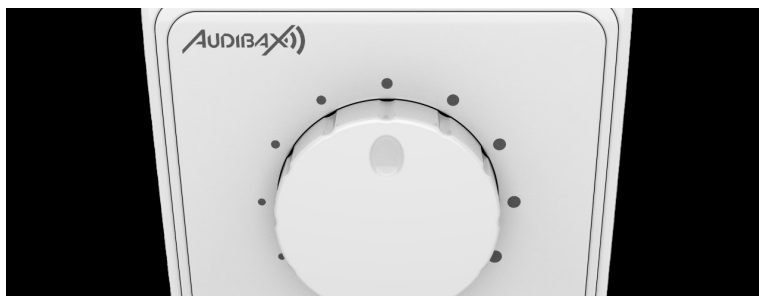
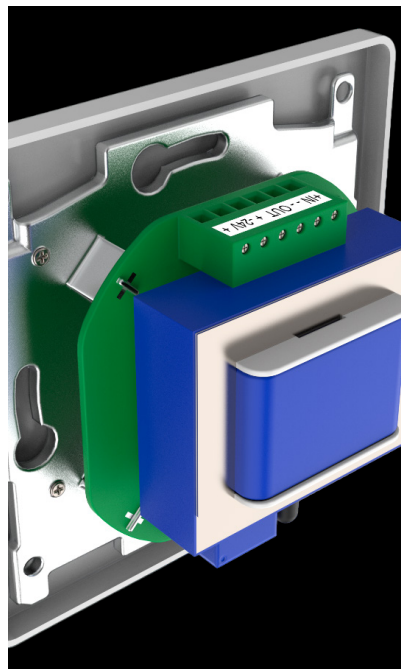
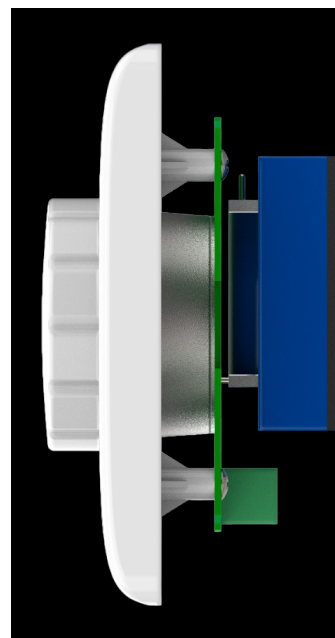
**COMMAND
YOUR SOUND
WITH THE
WALL SERIES
CONTROL
VOLUME**



WALL SERIES

WALL PANELS

DIGITAL MATRIX/
PROCESSORS



WALL SERIES

WALL PANELS

DIGITAL MATRIX/
PROCESSORS



Wall 12

12W VOLUME
CONTROL



Wall 30

30W VOLUME
CONTROL



Wall 50

50W VOLUME
CONTROL

MICROPHONES

Cut the cords, amplify the freedom. Elevate your performance with our wireless microphones. Experience seamless connectivity, pristine sound, and unparalleled mobility. Unleash your voice without limitations – where innovation meets wireless excellence.



AWM SERIES

WIRELESS MICROPHONES

MICROPHONES

WHERE YOUR VOICE TAKES CENTER STAGE!



AWM SERIES

WIRELESS MICROPHONES

MICROPHONES



AWM SERIES

WIRELESS MICROPHONES

MICROPHONES



AWM 201

DUAL WIRELESS
MIC SYSTEM



AWM 202

DUAL WIRELESS
MIC SYSTEM



AWM 203

DUAL WIRELESS
MIC SYSTEM



AWM 401

TETRA WIRELESS
MIC SYSTEM



AWM 402

TETRA WIRELESS
MIC SYSTEM



AWM 403

TETRA WIRELESS
MIC SYSTEM

AWM SERIES

WIRELESS MICROPHONES

MICROPHONES



AWM 401 TD

TRUE DIVERSITY
TETRA WIRELESS
MIC SYSTEM

AWM 403 TD

TRUE DIVERSITY
TETRA WIRELESS
MIC SYSTEM



AWM 404 TD

TRUE DIVERSITY
TETRA WIRELESS
MIC SYSTEM

AWM SERIES

SPECIFICATIONS

MICROPHONES

MODEL	AWM 201	AWM 202	AWM 203	AWM 401	AWM 402	AWM 403
Type	Dual Mic Wireless	Dual Mic Wireless	Dual Mic Wireless	Tetra Mic Wireless	Tetra Mic Wireless	Tetra Mic Wireless
Channels Select	200	200	200	200	200	200
Frequency Range	640-690Mhz	640-690Mhz	640-690Mhz	640-690Mhz	640-690Mhz	640-690Mhz
Emisor Type	Hand Mic	Body Pack	Body Pack	Hand Mic	Body Pack	Body Pack
Receptor Type	Station Receptor	Station Receptor	Station Receptor	Station Receptor	Station Receptor	Station Receptor
Mic In Connector	N/A	Mini XLR 3-pin	Mini XLR 3-pin	N/A	Mini XLR 3-pin	Mini XLR 3-pin
Mic Type	Hand Mic Dynamic Cardio	Lavalier Cardio	Head Mic Condenser Omni	Hand Mic Dynamic Cardio	Lavalier Cardio	Head Mic Condenser Omni
Receptor Connector	2 XLR CH & Jack 6,3 mixer	2 XLR CH & Jack 6,3 mixer	2 XLR CH & Jack 6,3 mixer	4 XLR CH & Jack 6,3 Mixer	4 XLR CH & Jack 6,3 Mixer	4 XLR CH & Jack 6,3 Mixer
Sync Ir Port	Yes	Yes	Yes	Yes	Yes	Yes
Frequency response	50Hz-15KHz	50Hz-15KHz	50Hz-15KHz	50Hz-15KHz	50Hz-15KHz	50Hz-15KHz
Diversity Ant	A/B	A/B	A/B	A/B	A/B	A/B
Signal source sensitivity	100dBa	100dBa	100dBa	105dBa	105dBa	105dBa
Signal To Noise Ratio	80dB	80dB	80dB	80dB	80dB	80dB
Working voltage	3V Battery	3V Battery	3V Battery	3V Battery	3V Battery	3V Battery
Hours Operate	Up to 8	Up to 8	Up to 8	Up to 8	Up to 8	Up to 8
Power Supply Station	AC240V-DCC 12v	AC240V-DCC 12v	AC240V-DCC 12v	AC240V-DCC 12v	AC240V-DCC 12v	AC240V-DCC 12v
Construction	ABS Resistance	ABS Resistance	ABS Resistance	ABS Resistance	ABS Resistance	ABS Resistance
Weight	Half 1U 19"	Half 1U 19"	Half 1U 19"	Half 1U 19"	Half 1U 19"	Half 1U 19"
Maximum Units Operate	10 Sets used at the same time	10 Sets used at the same time	10 Sets used at the same time	5 Sets used at the same time	5 Sets used at the same time	5 Sets used at the same time
Solutions	Hospitality Sport & Wellness Rental Leisure	Hospitality Sport & Wellness Rental Leisure	Hospitality Sport & Wellness Rental Leisure	Hospitality Sport & Wellness Rental Leisure	Hospitality Sport & Wellness Rental Leisure	Hospitality Sport & Wellness Rental Leisure

AWM SERIES

SPECIFICATIONS

MICROPHONES

MODEL	AWM 401 TD	AWM 403 TD	AWM 404 TD
Type	Tetra Mic Wireless	Tetra Mic Wireless	Tetra Mic Wireless
Channels Select	200	200	200
Frequency Range	640-690Mhz	640-690Mhz	640-690Mhz
Emisor Type	Hand Mic	Body Pack	Conference Mic
Receptor Type	Station Receptor	Station Receptor	Station Receptor
Mic In Connector	N/A	Mini Jack 3,5	4-pin Condenser Mic
Mic Type	Hand Mic Dynamic Cardio	Head Mic Condenser Omni	Conference Condenser
Receptor Connector	4 XLR CH & Jack 6,3 Mixer	4 XLR CH & Jack 6,3 Mixer	4 XLR CH & Jack 6,3 Mixer
Sync Ir Port	Yes	Yes	Yes
Frequency response	50Hz-15KHz	50Hz-15KHz	50Hz-15KHz
Diversity Ant	A/B	A/B	A/B
Signal source sensitivity	105dBa	105dBa	105dBa
Working voltage	3V Battery	3V Battery	3V Battery
Hours Operate	Up to 8	Up to 8	Up to 8
Power Supply Station	AC240V-DCC 12v-16V	AC240V-DCC 12v-16V	AC240V-DCC 12v-16V
Construction	Metal Anti-Scratch	Metal Anti-Scratch	Metal Anti-Scratch
Weight	1 UN 19"	1 UN 19"	1 UN 19"
Maximum Units Operate	5 Sets used at the same time	5 Sets used at the same time	5 Sets used at the same time
Solutions	Hospitality Sport & Wellness Rental Leisure	Hospitality Sport & Wellness Rental Leisure	Hospitality Sport & Wellness Rental Leisure

IEW 600

WIRELESS MICROPHONES

MICROPHONES

WHERE YOUR VOICE TAKES CENTER STAGE!

Immerse yourself in boundless sound with the Audibax IEW 600 wireless stereo in-ear system. Meticulously crafted for exceptional audio quality and unrestricted mobility, it stands out as the premier choice for music enthusiasts and sound professionals alike.



IEW 600

WIRELESS MICROPHONES

MICROPHONES

SPECIFICATIONS

MODEL	IEW 600
Type	In-Ear Wireless
Channels Select	50
Frequency Range	615-640MHz
Emisor Type	Monitor Station
Receptor Type	Body Pack monitor
Receptor Connector	Mini jack 3,5mm
Emisor Connector	2 XLR & Jack Combi
Sync Ir Port	Yes
Frequency Response	50Hz - 15KHz
Signal Source Sensitivity	104dB
Signal To Noise Ratio	90dB
Working voltage:	3V Battery
Hours Operate	Up to 10
Power Supply Station	AC240V-DCC 12v
Construction	Metal Anti-Scratch
Weight	Half 1U 19"
Maximum Units Operate	10-20 Receivers can be used at the same time
Solutions	Hospitality Leisure Rental Sport & Wellness



SIDNEY SERIES

WIRELESS MICROPHONES

MICROPHONES

Introducing the Audibax Sidney Conference 1000, a cutting-edge 4-channel UHF Wireless Conference System. Seamlessly connect up to 5 units, accommodating 20 microphones. Operating within the 610-670MHz frequency range with FM modulation, a 50MHz bandwidth, and an extensive 200 channels, it ensures a professional and versatile conferencing experience.

ELEVATE YOUR CONVERSATIONS



SIDNEY SERIES

WIRELESS MICROPHONES

MICROPHONES

SPECIFICATIONS

MODEL	SIDNEY CONFERENCE 1000
Type	Tetra Mic Wireless
Channels Select	200Ch
frequency Range	610 - 670MHz
Emisor Type	Conference Mic
Receptor Type	Station Receptor
Mic In Connector	4-pin Condenser Mic
Mic Type	Conference Condenser
Receptor Connector	4 XLR CH & Jack 6,3 Mixer
Sync Ir Port	Yes
Frequency response	80Hz-18KHz
Diversity Ant	A/B
Signal source sensitivity	105dB
Signal To Noise Ratio	100dB
Working voltage	3V Battery
Hours Operate	Up to 8
Power Supply Station	AC240V-DCC 12v
Construction	Metal & ABS
Weight	1 UN 19"
Maximum Units Operate	8 Mic
Solutions	Hospitality Sport & Wellness Rental Corporate



BMG20

WIRED MICROPHONES

MICROPHONES

CONFERENCE EXCELLENCE IN EVERY WORD

Introducing the Audibax BMG-20 Conference Microphone, equipped with a precision condenser capsule. Experience a frequency response of 40Hz-16KHz, a cardioid polar pattern ensuring focused capture, and an output impedance of 75Ω . With a sensitivity of $-40\text{dB} \pm 2\text{dB}$, this microphone delivers unparalleled clarity in professional conferencing environments.



BMG20

WIRED MICROPHONES

MICROPHONES

SPECIFICATIONS

MODEL	BMG20
Type	Wired Mic
Emissor Type	Conference Mic
Mic In Connector	XLR
Mic Type	Conference Condenser
Receptor Connector	XLR
Sync Ir Port	No
Frequency response	40Hz-16KHz
Signal source sensitivity	-40dB±2dB
Signal To Noise Ratio	86dB
Working voltage	Phantom 48V or 3v battery
Construction	Metal
Solutions	Hospitality Sport & Wellness Rental Corporate



DI BOXES/ TOOLS

Upgrade your audio arsenal with our Audio DI Boxes/Tools and unlock the full potential of your audio gears. Whether you're on stage, in the studio, or at home, our DI boxes are the secret weapon to achieving a pristine, unadulterated sound. Elevate your musical expression – because every note deserves to be heard in its truest form.



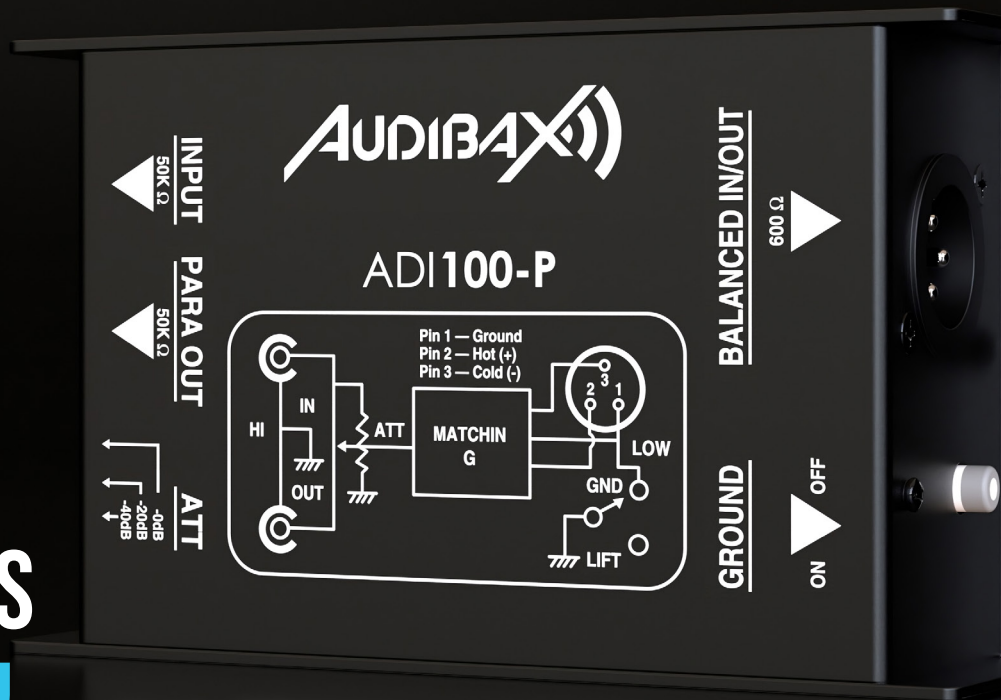


ADI SERIES

DI BOXES

DI BOXES/
TOOLS

WHERE
EVERY NOTE
RADIATES
BRILLIANCE
AND EVERY
TONE ECHOES
PERFECTION!



ADI SERIES

DI BOXES

DI BOXES/ TOOLS



ADI SERIES

DI BOXES

DI BOXES/
TOOLS



ADI-20A

DI ACTIVE BOX DUAL



ADI-10A

DI ACTIVE BOX



ADI-10M

DI MULTIMEDIA BOX



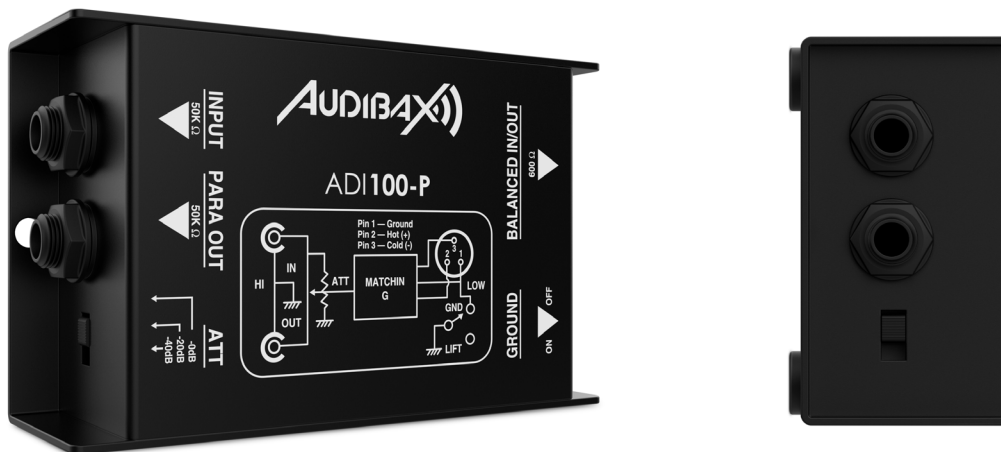
ADI-20P

DI PASSIVE BOX DUAL

ADI SERIES

DI BOXES

DI BOXES/
TOOLS



ADI-100P

DI PASSIVE BOX

- **Signal Conversion:** Converts unbalanced high-impedance signals for optimal connection to mixing boards.
- **Versatile Input and Output:** 1/4" TS jack for high-impedance instruments. Dual 1/4" TS output (can be used as a direct input or output for a monitor) and balanced XLR output for direct connection to mixing boards.
- **Gain Attenuator:** Flexible gain adjustment for different signal levels.
- **Ground Lift Switch:** Eliminates ground loops and unwanted noise with a switch that completely separates the ground connection.
- **Simple Setup:** Easy operation and intuitive configuration, accessible to non-technical users.
- **Innovative and Compact Design:** Compatible with various instruments, with compact dimensions and materials that minimize electromagnetic interference for a clean signal.
- **Wide Frequency Range:** Wide frequency response for faithful transmission of the original signal.

ADI SERIES

SPECIFICATIONS

DI BOXES/ TOOLS

ADI-10A

DI ACTIVE BOX

• The ADI-10A is an active 48V phantom-powered (stereo) D.I. box. This active direct box includes an internal digital switching power supply that converts 48V DC phantom power to generate a higher internal rail voltage. This allows the ADI-10A to handle transients of up to 9V without choking. More Dynamic headroom results in less square wave distortion. Also this active direct box features a transformer that isolates 48V phantom power to help eliminate ground loops while removing harsh and system noise. The ADI-10A is a very effective DI box for all types of instruments in both live stage and studio recording applications.

- **Input:** 1/4" Jack
- **Outputs:** male XLR
- **Input impedance:** >220k Ohms
- **Output impedance:** 600 Ohms
- **Controls:** 0/-15dBu pad & Ground-Lift switch
- **Dimensions:** 127x87x46mm
- **Weight:** 420g

ADI-10M

DI MULTIMEDIA BOX

• The ADI-10M is a two channel passive (stereo) D.I. box. This passive direct box features two audio transformer designed to handle extreme signal levels without distortion of any kind. It converts high impedance audio from instruments or audio device like MP3 and CD player to a low impedance XLR output to be fed directly into a mixing console or amplifier input. The direct box features 1/4" Jack, stereo RCA and 3.5mm mini Jack input compliment of connectivity options making it the perfect DI Box for professional AV integrators and rental companies that regularly deal with a variety of system interface problems. No power required.

- **Input:** 1/4" Jack unbalanced (Right and Left), stereo RCA, 3.5mm mini jack
- **Outputs:** XLR Male (Right and Left)
- **Input impedance:** >130k Ohms
- **Output impedance:** 600 Ohms
- **Controls:** 0/-15dBu pad & Ground-Lift switch
- **Dimensions:** 115x84x46mm
- **Weight:** 435g

ADI-20A

DI ACTIVE BOX DUAL

• The ADI-20A is an active 48V phantom-powered (stereo) D.I. box designed to be a part of your audio signal chain. This active direct box features an audio transformer and unique internal switching supply that employs 48 volt phantom power designed to handle extreme digital levels without distortion. It enables the user to lift the audio ground connection to eliminate noise without disconnecting the 48V phantom power source. The ADI-20A is an exceptionally effective DI box suitable for all types of instruments in both live stage and studio recording scenarios.

- **Input:** ¼" Jack (Right and Left)
- **Outputs:** balanced XLR (Right and Left)
- **Input impedance:** >200k Ohms
- **Output impedance:** 600 Ohms
- **Controls:** 0/-15dBu pad & Ground-Lift switch
- **Dimensions:** 128x87x46mm
- **Weight:** 440g

ADI-20P

DI PASSIVE BOX DUAL

• The ADI-20P is a passive two-channel D.I. box. This passive direct box features two audio transformers designed to handle extreme signal levels without distortion of any kind. It converts high impedance audio from instruments or audio line outputs to a low impedance balanced output to be fed directly into a mixing console or amplifier input. Low impedance (Lo-Z) is capable of longer cable runs via XLR connection with lower signal degradation than high impedance. No power required.

- **Input:** 2 x ¼" Jack (unbalanced)
- **Outputs:** 2 x XLR Male (balanced), 2 x ¼" Jack through (unbalanced)
- **Input impedance:** >130k Ohms
- **Output impedance:** 600 Ohms
- **Controls:** 0/-15dBu pad & Ground-Lift switch
- **Dimensions:** 107x70x45mm
- **Weight:** 322g

ACT1

CABLE TESTER

DI BOXES/
TOOLS

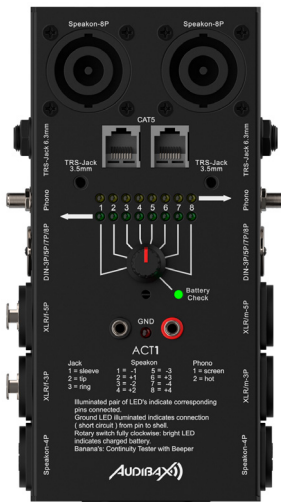
ELEVATE YOUR CONNECTIVITY WITH CONFIDENCE



ACT1

CABLE TESTER

DI BOXES/ TOOLS



The Audibax ACT1 cable tester is designed for versatile and convenient testing in a variety of environments, whether in live situations or in recording studios. Its universal compatibility makes it suitable for testing a wide range of cables with different connectors, including 1/4" TRS, balanced XLR, Phono/RCA, banana plug, Speakon, GND, CAT5 and DIN.

- **Versatile Testing:** Quickly and conveniently test all types of cables in any environment, whether live or in the recording studio.
- **Universal Compatibility:** You can test with various connector combinations, including 1/4" TRS, balanced XLR, Phono/RCA, banana plug, Speakon, GND, CAT5 and DIN.
- **Connection Selection Switch:** With an 8-position switch that facilitates quick identification of specific problems by selecting the connections to be tested.
- **Internal Battery:** Equipped with an internal battery for stand-alone testing without the need for external power.
- **LED Indicators:** LEDs confirm continuity and connection of each conductor, providing clear visual feedback on the status of tested cables and connectors.
- **Portability and Durability:** Compact and durable design, ideal for use in live and studio environments.

AHP SERIES

HEADPHONE AMPLIFIERS

DI BOXES/
TOOLS

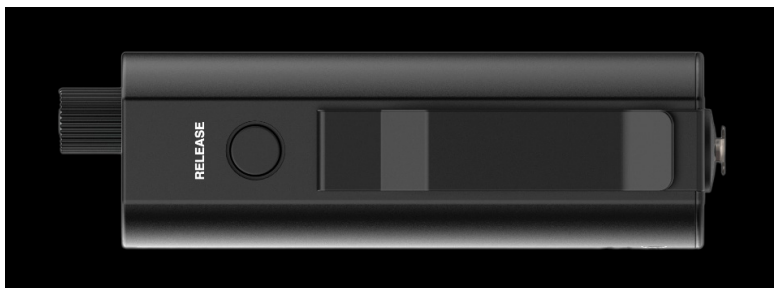
POWER IN EVERY PULSE



AHP SERIES

HEADPHONE AMPLIFIERS

DI BOXES/
TOOLS



AHP SERIES

HEADPHONE AMPLIFIERS

DI BOXES/
TOOLS



AHP100A

ACTIVE HEADPHONE AMPLIFIER

AHP100P

PASSIVE HEADPHONE AMPLIFIER



AHP200A

HEADPHONE AMPLIFIER

AHP SERIES

SPECIFICATIONS

DI BOXES/ TOOLS

AHP100A

- **Active and Portable Design:** In-ear personal monitor with built-in volume control and battery for optimized performance.
- **Versatile Connectivity:** XLR or 1/4" connection for personal monitor mixes, providing flexibility in connection options.
- **Integrated Volume Control:** Adjusts the output level and turns off the unit by rotating counterclockwise.
- **Stereo/Mono Configuration:** Internal switch for configuring in mono when using the auxiliary send from a mixer or in stereo when connecting to a headphone output or another stereo source.
- **Headphone Output:** Allows the connection of headphones through a 1/8" stereo mini connector.
- **Belt Clip:** Provides a hands-free option when attached to a belt or pants.
- **Easy Battery Access:** Battery compartment button for easy insertion.

AHP100P


- **Compact and Sturdy Design:** Aluminum casing for a stable and durable construction.
- **Versatile Connectivity:** XLR or 1/4" connectors for easy connection to personal monitor mixes.
- **Headphone Output:** Allows headphone connection through a 1/8" mini connector.
- **Integrated Volume Control:** Volume knob for adjusting the output level according to preferences.
- **Simple Setup:** Connect it to related devices and start using it without complications.
- **Adaptable to Different Applications:** Versatile adjustment for various situations and needs.
- **Passive Circuit:** Operation without the need for additional power, providing simplicity and reliability.

AHP200A

- **Compact and Flexible Design:** Headphone monitoring amplifier with two balanced XLR inputs and a 1/8" headphone output; easily switch between stereo and mono mixing with the corresponding switch.
- **Versatility in Connections:** Great flexibility with multiple connections, making it useful in various situations.
- **Robust Construction:** Sturdy and stable aluminum housing for increased durability, with foam pads for protection against drops.
- **Power Options:** Powered by a 9V battery or DC adapter, providing flexibility in power sources.
- **Easy and Convenient to Use:** Power button for initiation, input controls, 9V DC power adapter, 3.5mm stereo headphone jack, and volume adjustment for both outputs.
- **Battery Indicator:** LED indicators display the battery status, facilitating easy monitoring of power levels. Color change indicates when battery replacement is necessary.
- **Powerful Volume Adjustment:** Volume knob for precise adjustment on both output channels.

AUDIO HARDWARE





THE SOUND IN YOU

Boost your rhythm through the
best range of sound accessories.
Discover the melody of your life
and find the vibe

CWS 10

CABLE ACCESSORIES

AUDIO HARDWARE

PLUG INTO EXCELLENCE



CWS 10

CABLE ACCESSORIES

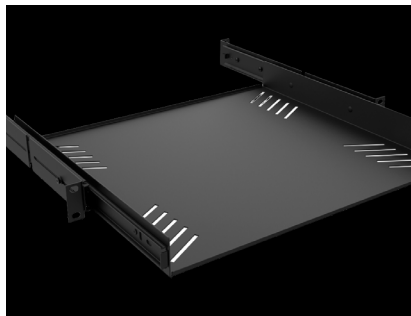
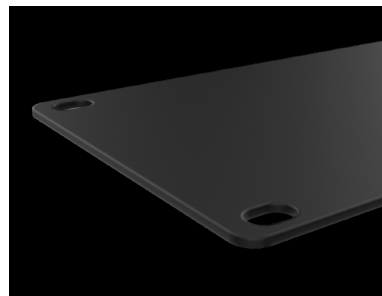
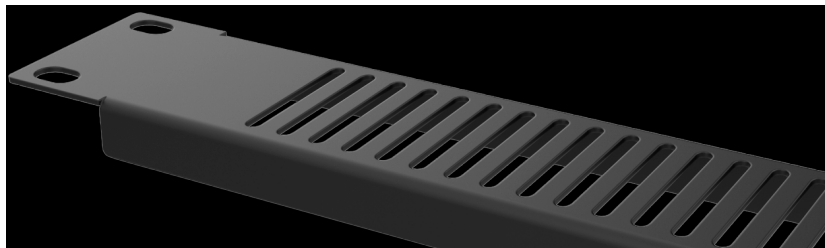
AUDIO
HARDWARE



PRO RACK SERIES

RACK ACCESSORIES

AUDIO
HARDWARE



PRO RACK SERIES

RACK ACCESSORIES

AUDIO
HARDWARE



Pro Rack 2U

Pro Rack 4U



Pro Rack 6U

PRO RACK SERIES

RACK ACCESSORIES

AUDIO
HARDWARE



Pro Rack 8U



Pro Rack 12U



Pro Rack 16U

PRO RACK SERIES

STANDS ACCESSORIES

AUDIO
HARDWARE



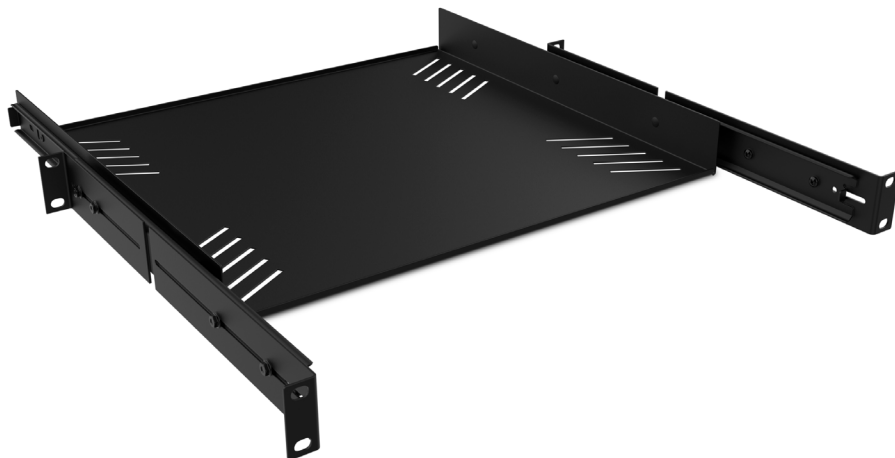
Pro Rack Stand 9U

RACK STAND
WITH WHEELS

PRO RACK SERIES

DRAWERS ACCESSORIES

AUDIO
HARDWARE



Pro Rack Drawer Ext 1U

RACK DRAWER

Pro Rack Drawer 2U

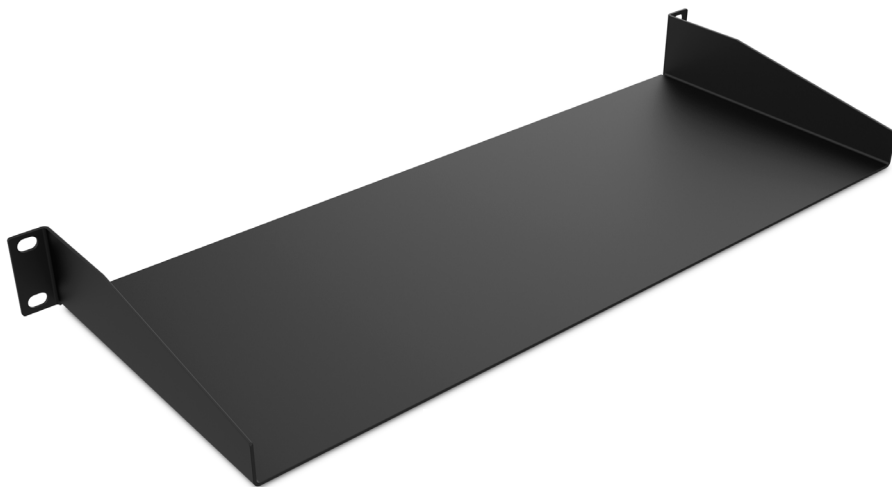
RACK DRAWER



PRO RACK SERIES

SHELVES ACCESSORIES

AUDIO
HARDWARE

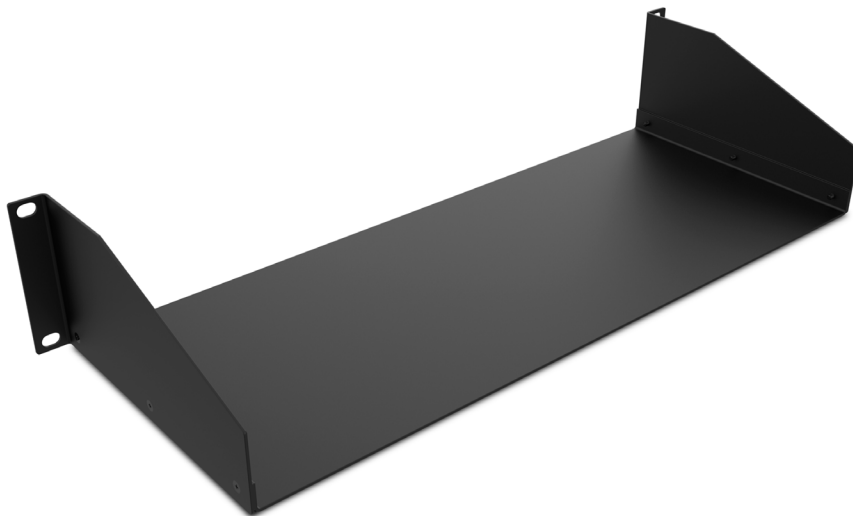


Pro Rack Shelf 1U

RACK SHELF

Pro Rack Shelf 2U

RACK SHELF



PRO RACK SERIES

PANELS ACCESSORIES

AUDIO
HARDWARE

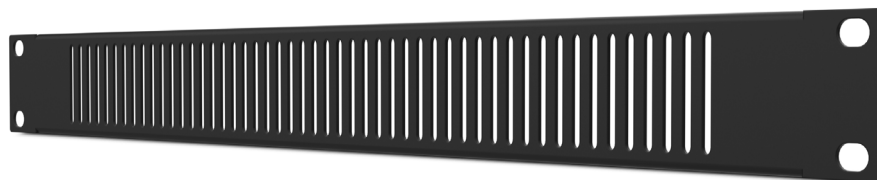
Pro Rack Panel 1U

RACK PANEL



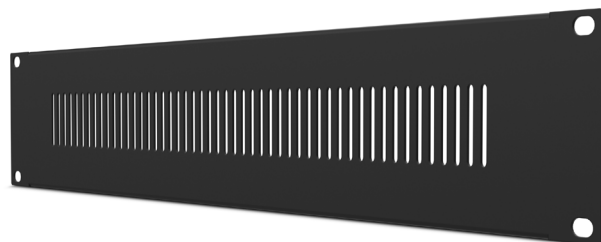
Pro Rack Panel 2U

RACK PANEL



Pro Rack Panel Vent 1U

VENTILATION
PANEL



Pro Rack Panel Vent 2U

VENTILATION PANEL

**IMMERSE
YOURSELF IN
THE
SOUND OF
MAGIC!**





PRODUCT CATALOG 2024

SALES@AUDIBAX.COM - WWW.AUDIBAX.COM
WWW.THEGROUPEMH.COM

All information included in this catalog is intended to serve as a general guide. The company does not assume the responsibility of any errors on it.

Audibax reserves the right to amend these specifications and designs without prior notice. These specifications and designs are not contractually valid.

Please, contact us for more detailed information.